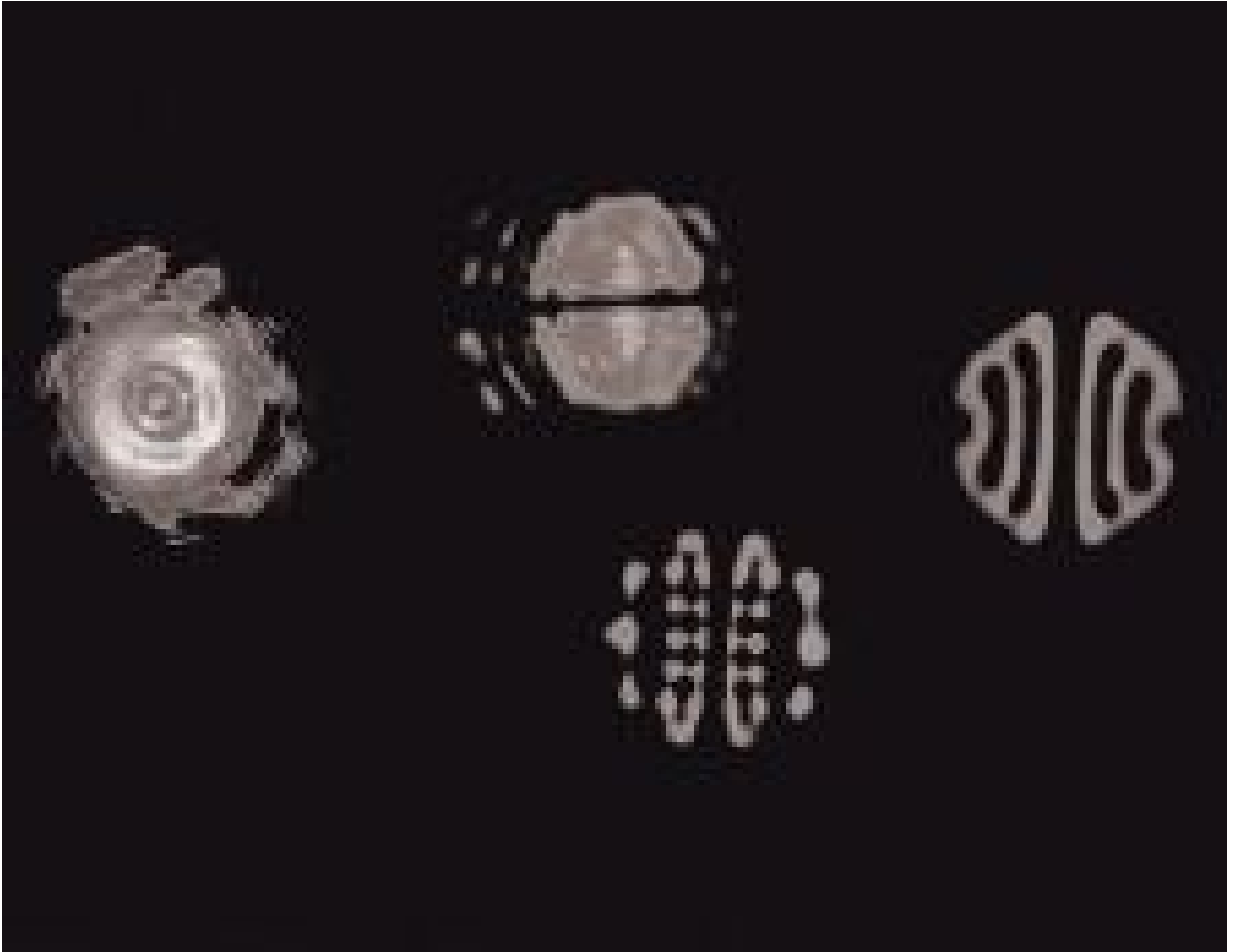


[See all 6 Products in Family](#)

## ZAP-IT® Laser Alignment Paper, 2 x 5", Box of 50 Sheets



Stock #15-826 **10 In Stock**

⊖ 1 ⊕ £104.<sup>80</sup>

**ADD TO CART**

### Volume Pricing

Qty 1-5	£104.80 each
Qty 6-24	£94.40 each
Need More?	<a href="#">Request Quote</a>

ⓘ Prices shown are exclusive of VAT/local taxes

### Product Downloads

### General

ZAP-25-50 **Model Number:**

**Note:**  
Recommended Pulsed Width: 1ns to 30ms  
Recommended Power Level Range: 5 mJ/cm<sup>2</sup> to 20 J/cm<sup>2</sup>

### Physical & Mechanical Properties

0.009 **Thickness (inches):**

0.24	<b>Thickness (mm):</b>
2 x5	<b>Sheet Size (in):</b>
50.8 x 127	<b>Sheet Size (mm):</b>

## Regulatory Compliance

<a href="#">Compliant</a>	<b>RoHS 2015:</b>
<a href="#">View</a>	<b>Certificate of Conformance:</b>
<a href="#">Compliant</a>	<b>Reach 247:</b>

## Product Details

- Industrial Standard Beam Profile Viewing Paper
- Records Beam Shape, Divergence, Mode, and Intensity Profile of Pulsed Lasers
- Suitable for Broadband Sources from UV to IR

ZAP-IT® Laser Alignment Paper is designed to test the characteristics of pulsed laser sources from the ultraviolet to infrared. Beam characteristics are recorded by holding the ZAP-IT® Laser Alignment Paper in the beam path. ZAP-IT® Laser Alignment Paper is ideal for use in alignment applications or with [laser optics](#) including laser beam expanders, optical lenses, apertures, attenuators, or power meters. For continuous wave lasers, use a mechanical chopper, Q-switch, or manually switch the laser on and off rapidly to create short pulses.

**Note:** It may be difficult to see the beam characteristics when the input beam diameter is 1/4"/6.35mm or less. If so, use a [beam expander](#) or [plano convex lens](#) to magnify the beam diameter. If using a plano convex lens, place ZAP-IT® Laser Alignment Paper at an image distance of 2.5 times longer than the focal length of the lens.