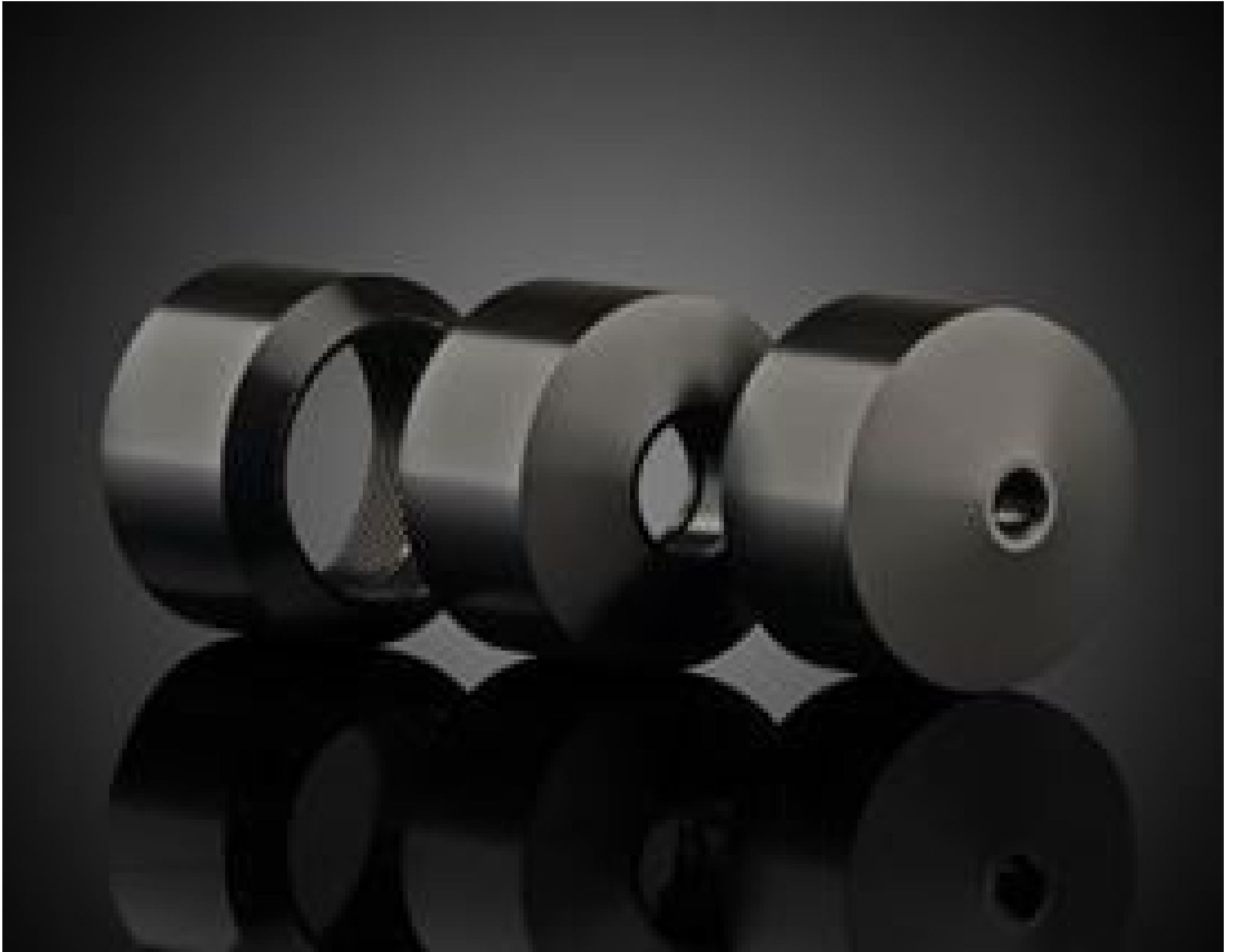


SM1 Tube, 9mm Optic Adapter



Stock #36-432 **13 In Stock**

− 1 + £24.⁰⁰

ADD TO CART

Volume Pricing

Qty 1-5	£24.00 each
Qty 6+	£22.64 each
Need More?	Request Quote

i Prices shown are exclusive of VAT/local taxes

Product Downloads

General

Fixed **Type:**

Circular **Type of Optics:**

SMTube System **Tube System Compatibility:**

Physical & Mechanical Properties

0.50 **Min. Thickness of Compatible Optics (mm):**

8.50 **Max. Thickness of Compatible Optics (mm):**

8 **Clear Aperture CA (mm):**

Black Anodized Aluminum **Construction:**

Threading & Mounting

9 **Size of Compatible Optics (mm):**

Regulatory Compliance

[Compliant](#) **RoHS 2015:**

[View](#) **Certificate of Conformance:**

[Compliant](#) **REACH 241:**

Product Details

- Compatible with any [SM1 Threaded Lens Tube](#)
- Mounts 5mm to 19.05mm Optical Components
- Drop-In Mounting for Easy Assembly

SM Lens Tube Drop-In Mounts allow easy integration of many standard diameter lenses into SM1 Tube Systems. Featuring a common outer diameter of 25.4mm, the mount design ensures lenses are well centered when dropped into [SM1 threaded lens tubes](#). These drop-in mounts expand the mounting diameter capability of any SM1 threaded lens tube system from only 25.0/25.4mm diameter optics to also include 5mm, 6mm, 9mm, 10mm, 15mm, 18mm, and 19.05mm diameter optics. SM Lens Tube Drop-In Mounts are compatible with any SM1 threaded lens tube, making these mounts an essential addition to any lab or OEM system setup.