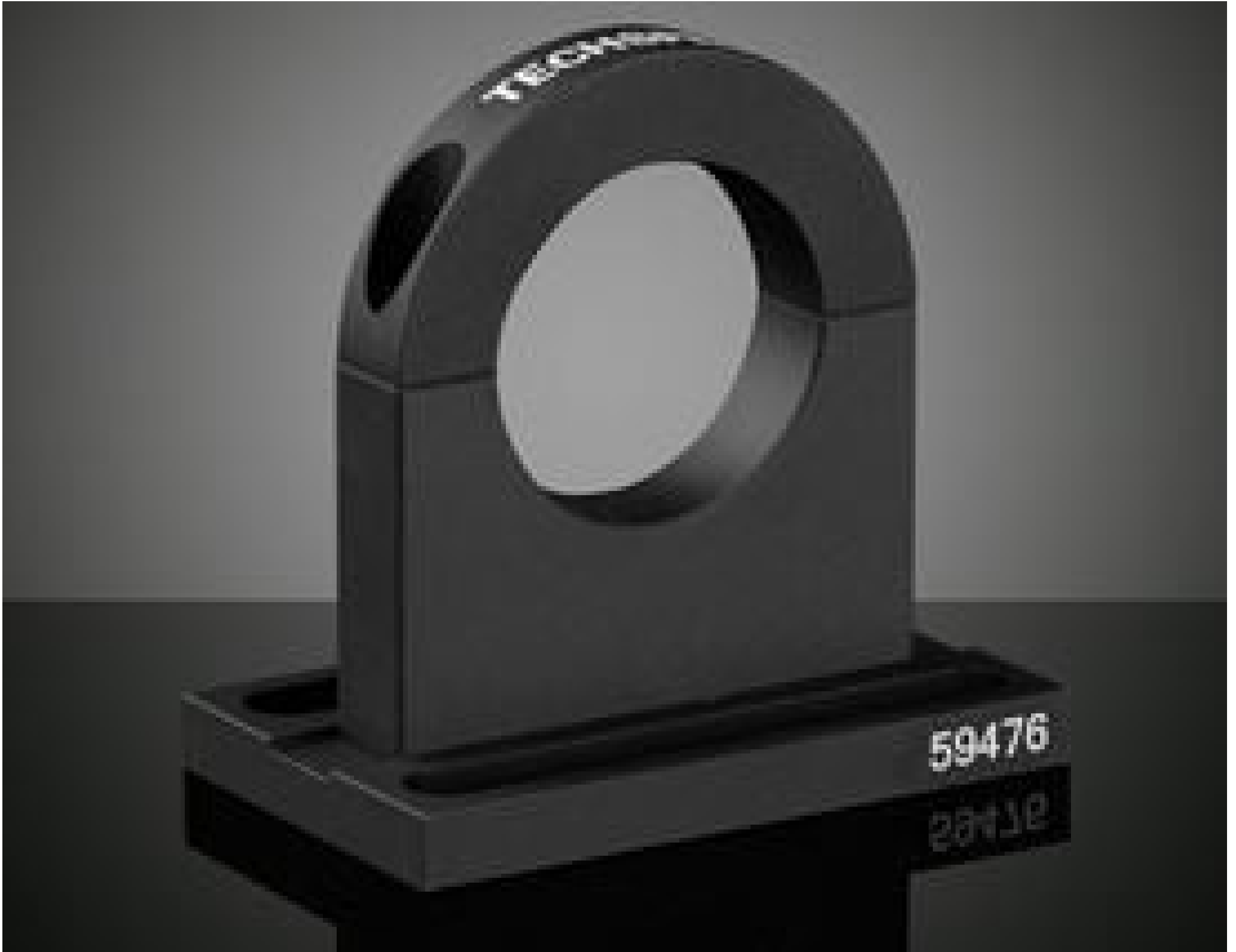


TECHSPEC® Mounting Clamp, Metric



Mounting Clamp, Metric, #59-476

Stock **#59-476** **20+ In Stock**

⊖ 1 ⊕ £97⁰⁰

ADD TO CART

Volume Pricing	
Qty 1-4	£97.60 each
Qty 5-24	£88.80 each
Qty 25-99	£80.00 each
Need More?	Request Quote

ⓘ Prices shown are exclusive of VAT/local taxes

Product Downloads

General

Mounting Clamp

Type:

Includes:
M6 x1 x 12mm SHCS (4)
8-32 x 1/4" SHCS (4)

Note:

Physical & Mechanical Properties

63.4	Height (mm):
31.5	Inner Diameter (mm):
Construction: Matte Black Anodized Aluminum (6061-T6)	
63.5 x 38.1	Base Size (mm):
6.6	Base Thickness (mm):

Regulatory Compliance

Certificate of Conformance:
[View](#)

Product Details

- AR Coated for Nd:YAG Laser Wavelengths: 532nm and 1064nm
- Fixed Magnifications Available from 3X to 10X
- Divergence Adjustable through Non-Rotating Optical Design for Reduced Beam Wander

TECHSPEC® Draconis® Nd:YAG Laser Line Beam Expanders feature high performance optical designs that have been optimized and tested for Nd:YAG laser wavelengths. These beam expanders offer diffraction-limited performance over large input beam diameters and wide acceptance angles, eliminating the need for critical alignment. Mechanical adjustment through a sliding optical design corrects errors in divergence or collimation. Due to the lack of ghost images focusing on internal surfaces, these beam expanders ensure compatibility with high power lasers. TECHSPEC Draconis Nd:YAG Laser Line Beam Expanders' C and T input/output mounting threads are compatible with Edmund Optics' line of threaded mounting components, or mounting can be achieved using an optional mounting clamp. Laser Beam Expanders are ideal for any Nd:YAG application including laser cutting, welding, or marking.

TECHSPEC Draconis® Broadband Beam Expanders are also available. For more cost sensitive applications, Edmund Optics also offers TECHSPEC Scorpii® Nd:YAG Beam Expanders. For HeNe laser applications, TECHSPEC Arcturus® HeNe Beam Expanders are available. For applications where rotating optics are acceptable, the TECHSPEC Vega® Laser Line Beam Expanders and TECHSPEC Vega® Broadband Beam Expanders are available. For broadband or ultrafast applications, TECHSPEC Canopus® Reflective Beam Expanders are available.

532nm versions are compatible with popular 530nm laser applications, and 1064nm versions are ideal for use with laser applications at 1060nm, 1070nm, and 1075nm.



Technical Information

