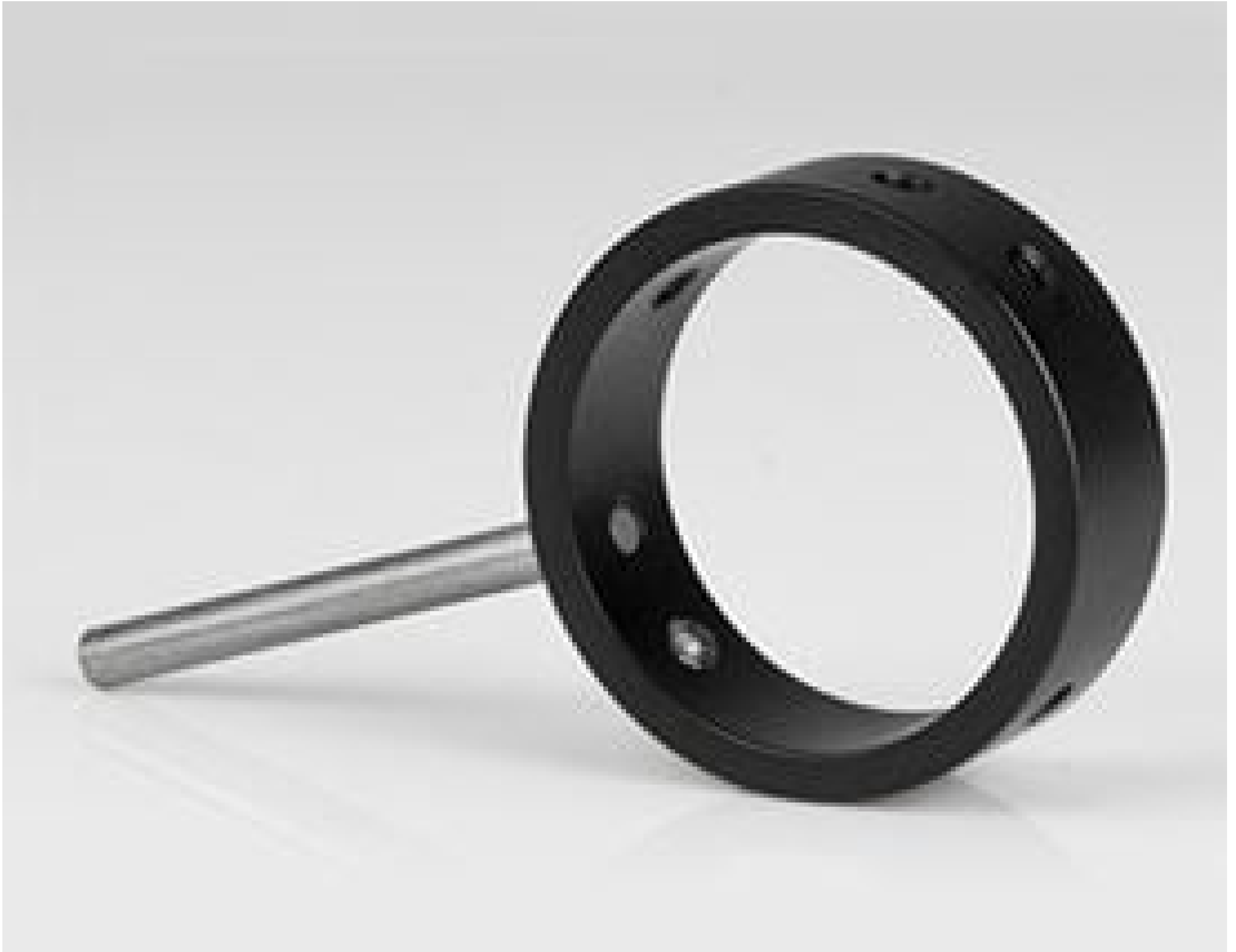


**TECHSPEC® C-Mount to Mitutoyo Objective Adapter**



#85-717



Stock #86-883 **8 In Stock**

⊖ 1 ⊕ £42<sup>00</sup>

**ADD TO CART**

Volume Pricing	
Qty 1+	£42.80 each
Need More?	<a href="#">Request Quote</a>

ⓘ Prices shown are exclusive of VAT/local taxes

Product Downloads

**General**

Thread Adapter

**Function:**

Objective

**Type of Optics:**

**Note:**

Male: C-Mount  
Female: M26 x36TPI

## Physical & Mechanical Properties

Compatible Plate Inner Diameter (mm):  
30.0

Length (mm):  
14.00

Inner Diameter (mm):  
M26 x 36TPI

Construction:  
Black Anodized Aluminum

Dimensions (mm):  
30 Dia.

## Regulatory Compliance

RoHS 2015:  
[Compliant](#)

Certificate of Conformance:  
[View](#)

Reach 235:  
[Compliant](#)

## Product Details

- English and Metric Post Adapters
- Customizable Blank Disks
- Reducing Rings

TECHSPEC® Cage System Accessories are additional components for customizing a cage system. Reducing rings are used to decrease the inner diameter of cage system plates, and feature a thru-hole that allows one of the set screws to pass from the plate, through the ring, to the optic or optical mount. For mounting directly to [posts](#), post adapter disks feature M6 or 1/4-20 tapped holes. 25mm diameter x 25mm length cage system post adapter disks can also be used to join a swivel plate pair. Blank disks are available to block optical paths, or to create customized mounts. Each blank disk features a 3mm diameter x 1mm deep centering hole for easy customization. Compatible with [#85-641](#) 30mm Side Access Plate, [#85-717](#) 25mm Interchangeable Optical Mount is equipped with a handle for easy insertion and removal from a cage setup.

**Note:** [#85-719](#) C-Mount Adapter fits within the inner diameter of 30mm cage system plates and features both male and female threading for easy integration with [TECHSPEC C-mount components](#).

### Quick Video Demonstration

Maximize your application performance with the right products. View a quick video demonstration of TECHSPEC Cage System components: [Interchangeable Optical Mount and Side Access Mounting Plate](#).