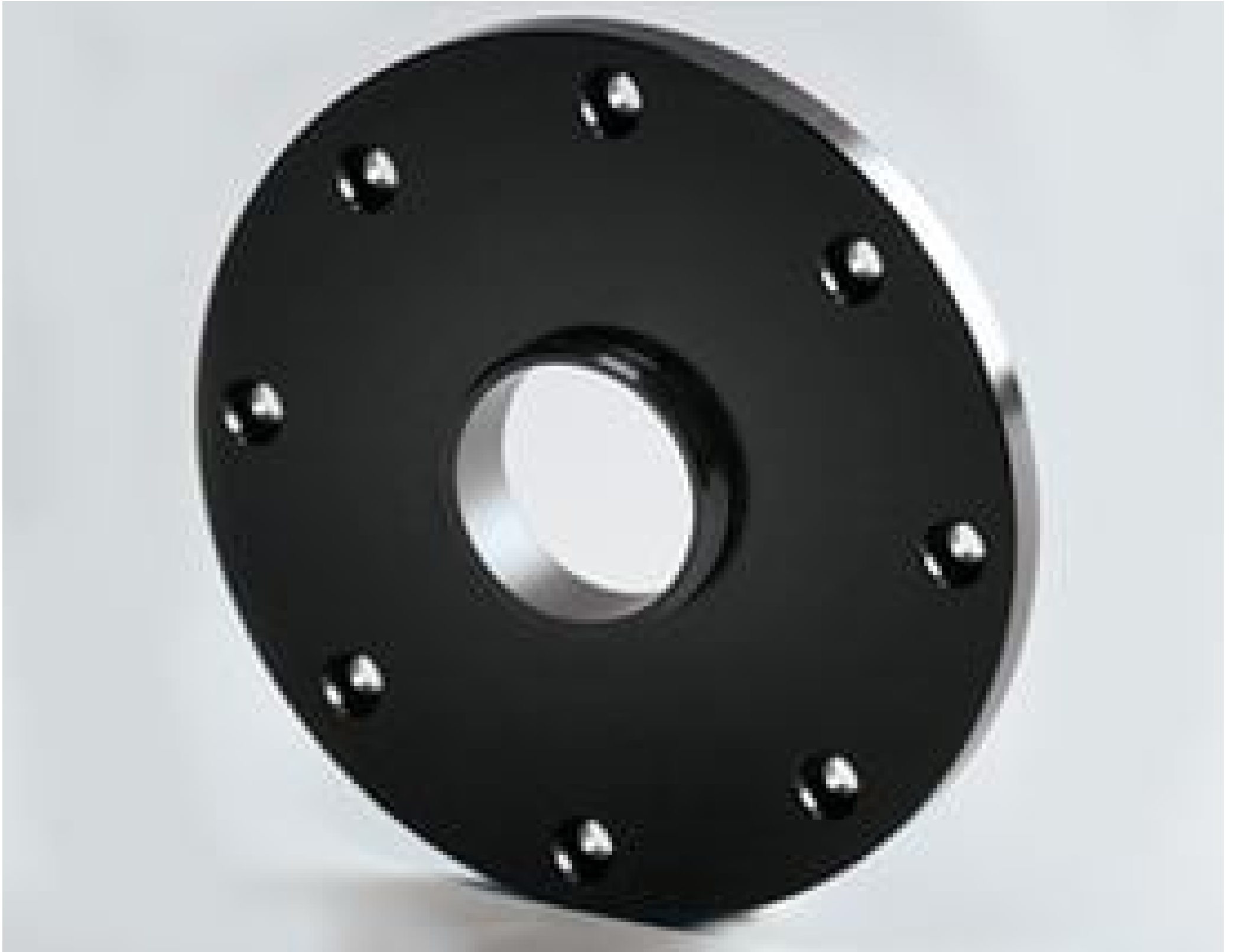


Male C-Thread Adapter Plate for #52-572



#58-360

Stock **#58-360** **12 In Stock**

⊖ 1 ⊕ £58⁴⁰

ADD TO CART

Volume Pricing	
Qty 1+	£58.40 each
Need More?	Request Quote

ⓘ Prices shown are exclusive of VAT/local taxes

Product Downloads

Physical & Mechanical Properties

5.00 **Thickness (mm):**

Black Anodized Aluminum **Construction:**

Threading & Mounting

1" x 32 TPI **Mounting Threads:**

Product Details

- Manual 360° Rotation
- Locking Thumb Screw for Secure Positioning and Alignment
- Compatible with [T-Mount Optic Mounts](#)

The Rotary Optic Mount allows smooth manual 360° rotation of optics for easy relative angular positioning. An ideal alternative for expensive rotary translation stages, this rotary optic mount can be used for aligning prisms, beam splitters, polarizers and other optical components using a 180° (90°-0-90°) scale with 1° increments. The mount is compatible with [T-Mount Optic Mounts](#). The Rotary Optic Mount is constructed of black anodized aluminum with a stainless-steel lever. [#52-573](#) includes a 4" long stainless steel mounting post [#59-000](#).

Technical Information

