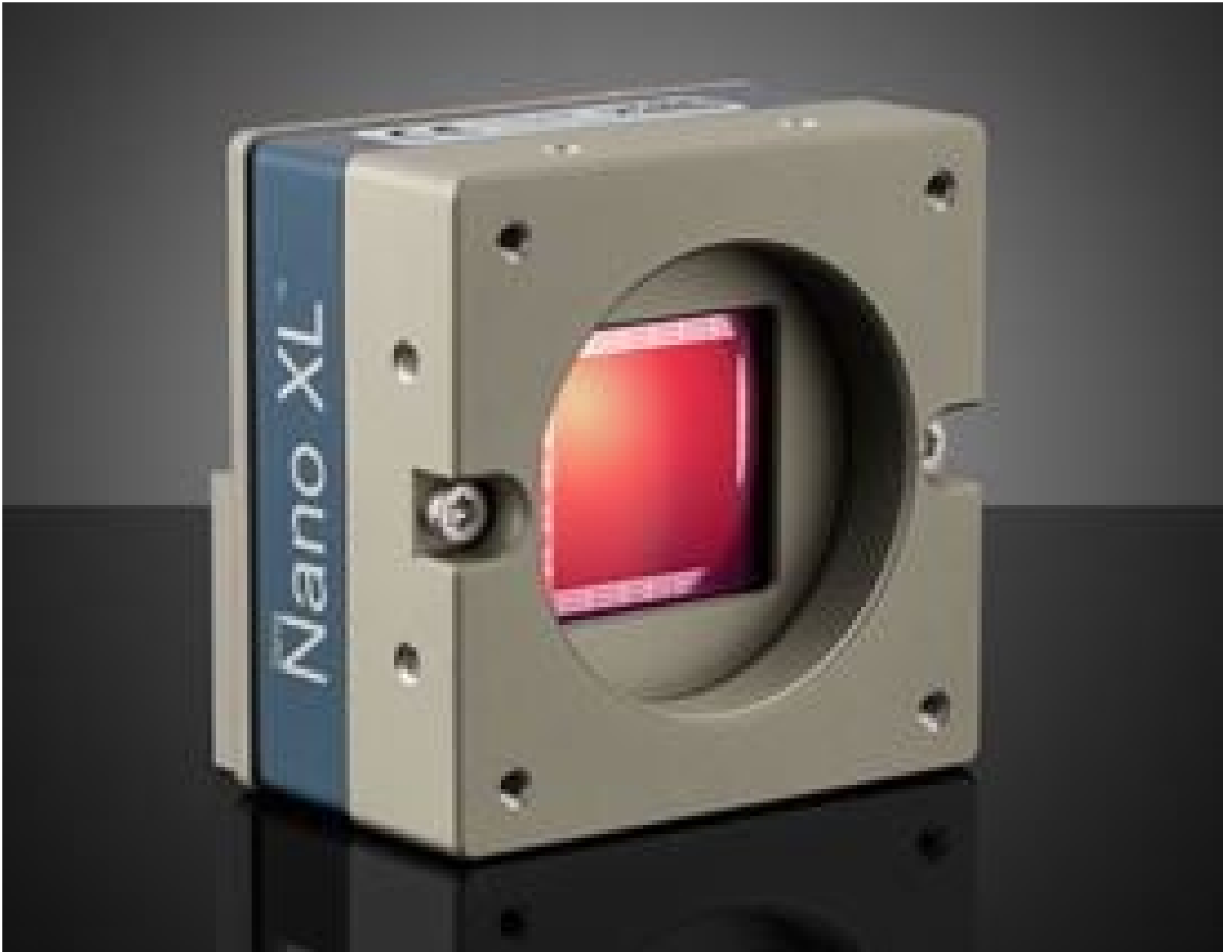


[See all 13 Products in Family](#)

M8205, APS-C Monochrome, Teledyne DALSA Genie Nano 10GigE PoE Camera

See More by [Teledyne DALSA](#)



Teledyne DALSA Genie™ Nano 10GigE Cameras - Front



Stock **#28-680** [CONTACT US](#)

⊖ 1 ⊕ £5,456⁰⁰

ADD TO CART

Volume Pricing	
Qty 1+	£5,456.00 each
Need More?	Request Quote

ⓘ Prices shown are exclusive of VAT/local taxes

Product Downloads

Monochrome **Spectrum:**

General

Monochrome Camera **Type:**

G6-GMB1-M8205 **Model Number:**

Teledyne DALSA **Manufacturer:**

Genie Nano-10GigE **Camera Series:**

Physical & Mechanical Properties

59 x 59 x 41 (excludes connectors and lens mount) **Dimensions (mm):**

183 **Weight (g):**

Full **Housing:**

Sensor

APS-C **Sensor Format:**

67.10 **Resolution (Megapixels):**

13.80 **Frame Rate (fps):**

8,192 x 8,192 **Pixels (H x V):**

2.50 x 2.50 **Pixel Size, H x V (µm):**

20.48 x 20.48 **Sensing Area, H x V (mm):**

Teledyne e2v Emerald 67M **Imaging Sensor:**

Progressive Scan CMOS **Type of Sensor:**

Global **Shutter Type:**

8/10 bit **Pixel Depth:**

Automatic, Programmable, or via External Trigger **Exposure Time:**

62.00 **Dynamic Range (dB):**

GigE Vision v2.0 **Machine Vision Standard:**

Electrical

12.5 **Power Consumption (W):**

Hardware & Interface Connectivity

10GigE (PoE) **Interface:**

5GigE, RJ45 with Screw Locks **Connector:**

2 opto-isolated input, 3 opto-isolated output **GPIOs:**

Hardware Trigger (GPIO) or Software Trigger **Synchronization:**

Back Panel **Interface Port Orientation:**

6-pin Hirose (HR10) **GPIO Connector Type:**

Threading & Mounting

M42-Mbunt **Mount:**

¼-20 with Tripod Mount Adapter [#34-966](#) **Mounting Threads:**

Environmental & Durability Factors

-20 to +60 **Operating Temperature (°C):**

-30 to +60 **Storage Temperature (°C):**

Regulatory Compliance

Exempt **RoHS 2015:**

Product Details

- Up to 67.10 MP Resolution with Framrates up to 18.50FPS
- Supports Trigger-to-Image Reliability (T2IR) Framework
- Compact (44 x 59 x 59mm), M42-Mount, Lightweight, and Robust All Metal Design



Teledyne
Authorized
Distributor

Teledyne DALSA Genie™ Nano 10GigE Cameras are designed with the 10GBASE-T (10GigE) Ethernet Interface and can also run at ethernet link speeds of 1, 2.5, or 5GigE. These M42-mount cameras are available with either the Teledyne e2v Emerald 36M sensor featuring a 1.4" format or the Teledyne e2v Emerald 67M sensor which features an APS-C format. Genie™ Nano cameras support Sopera LT SDKs and 3rd Party GenICam compliant SDKs allowing for upgrading current systems without changing application software. Teledyne DALSA Genie™ Nano 10GigE Cameras support the Trigger-to-Image Reliability (T2IR) framework which is a combination of hardware and software features that work together at a system level to help improve the reliability and reduce the downtime of imaging systems. These cameras are ideal for applications involving Electronics Manufacturing Inspection, Intelligent Traffic Systems, and Aerial Imaging.

Sopera LT is a free image acquisition and control software development toolkit (SDK) for Teledyne DALSA'S 1D cameras / 2D cameras / 3D Laser Profiler cameras and frame grabbers. Hardware independent in nature, Sopera LT offers a rich development ecosystem for machine vision OEMs and system integrators. Sopera LT supports image acquisition from cameras and frame grabbers based on machine vision standards including GigE Vision™, CameraLink®, CameraLink HS™, CoaXpress®, and USB3 Vision™.