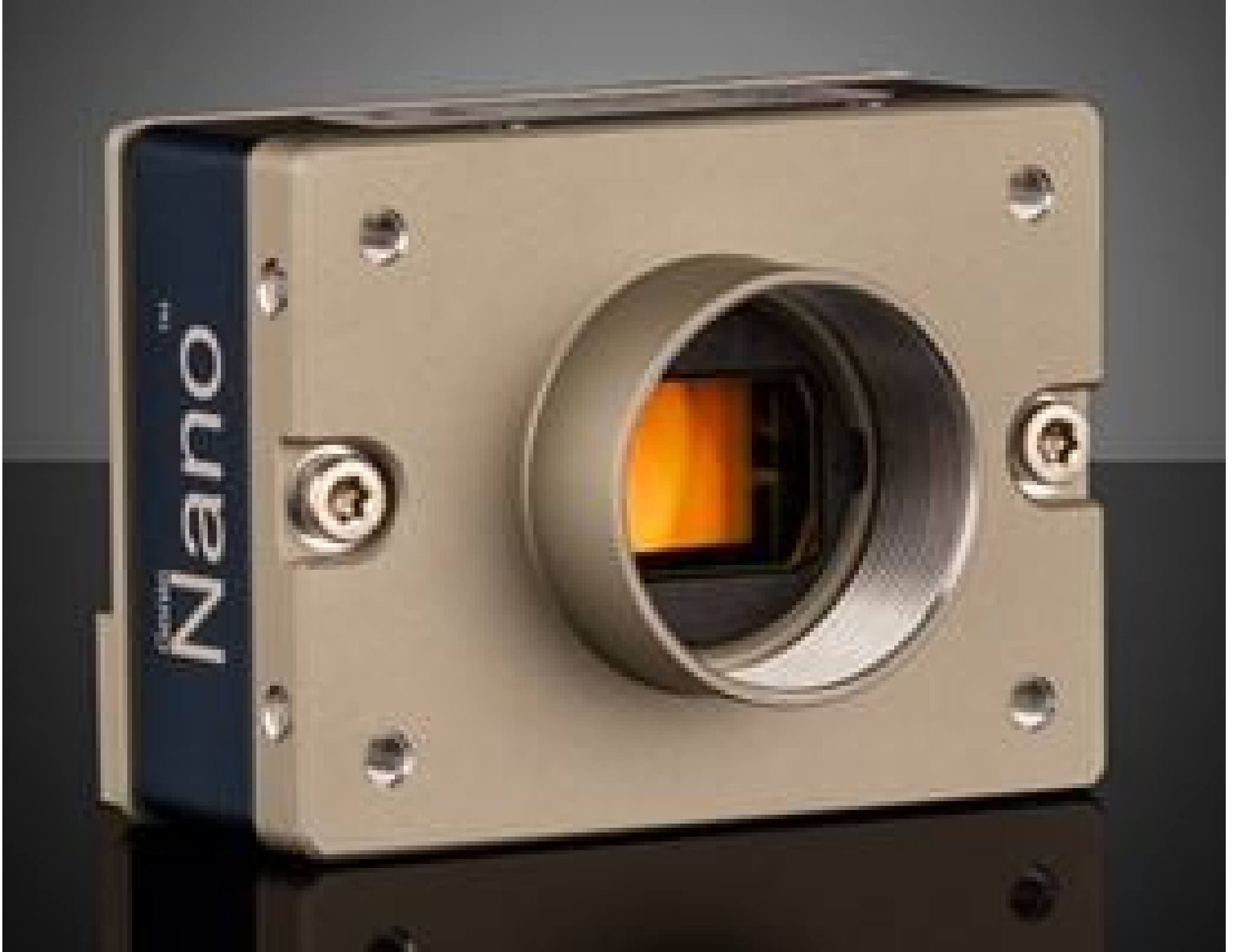


[See all 21 Products in Family](#)

M8105, Super 35mm Format Monochrome, Teledyne DALSA Genie Nano 5GigE PoE Camera (Recertified 05-P)

See More by [Teledyne DALSA](#)



Teledyne DALSA Genie™ Nano 5GigE Cameras (Front)



Stock #28-676-RCD-05P **RECERTIFIED** **1 In Stock**

[Similar Cameras](#)

⊖ 1 ⊕ £3,944⁰⁰

ADD TO CART

Volume Pricing	
Qty 1+	£3,944.00 each
Need More?	Request Quote

ⓘ Prices shown are exclusive of VAT/local taxes

Product Downloads

Monochrome **Spectrum:**

General

Type:

Monochrome Camera

Model Number:
G5-GM31-MB105

Manufacturer:
Teledyne DALSA

Camera Series:
Genie Nano-5GigE

Physical & Mechanical Properties

Dimensions (mm):
59 x 59 x 41 (includes connectors and lens mount)

Weight (g):
183

Housing:
Full

Sensor

Image Buffer:
450MB

Sensor Format:
Super 35MMFormat

Resolution (Megapixels):
44.40

Frame Rate (fps):
19.30

Pixels (H x V):
8,192 x 5,420

Pixel Size, H x V (µm):
3.20 x 3.20

Sensing Area, H x V (mm):
26.21 x 17.34

Imaging Sensor:
ON Semi XGS45000

Type of Sensor:
Progressive Scan CMOS

Shutter Type:
Global

Pixel Depth:
8/10 bit

Exposure Time:
Automatic, Programmable, or via External Trigger

Dynamic Range (dB):
66.00

Machine Vision Standard:
GigE Vision v2.0

Electrical

Power Consumption (W):
9.4 - 9.6

Hardware & Interface Connectivity

Interface:
5GigE (PoE)

Connector:
5GigE, RJ45 with Screw Locks

Power Supply:
Power Supply Required and Sold Separately:
USA: [#34-967](#)
Europe: [#34-967](#)
Japan: [#34-967](#)
Korea: Not Available
China: [#34-967](#)

GPIOs:
2 opto-isolated input, 3 opto-isolated output

Synchronization:
Hardware Trigger (GPIO) or Software Trigger

Interface Port Orientation:
Back Panel

GPIO Connector Type:
6-pin Hirose (HR10)

Threading & Mounting

Mount:
M42-Mbunt

Mounting Threads:
1/4-20 with Tripod Mount Adapter [#34-966](#)

Environmental & Durability Factors

-20 to +65 **Operating Temperature (°C):**

-30 to +65 **Storage Temperature (°C):**

Regulatory Compliance

[View](#) **Certificate of Conformance:**

Product Details

- 5GBASE-T (5GigE) Ethernet Interface
- 3.2 to 12.4 Megapixel Sensors
- TurboDrive™ Technology for Data Transfer Speeds up to 985 MB/s
- Compact (32 x 44 x 59mm), Lightweight, and Robust Design



Teledyne
Authorized
Distributor

Teledyne DALSA Genie™ Nano 5GigE Cameras are available with a range of SONY Pregius sensors with resolutions from 3.2MP to 12.4MP. The 5GigE Ethernet interface provides data transfer speeds up to 5 times faster than the conventional GigE interface, which when combined with TurboDrive™ technology allows these cameras to achieve frame rates up to 187fps while retaining full image quality. The included Sopera CamExpert software provides a simple image acquisition interface with Sopera LT SDK libraries for OEM and system integration applications. Teledyne DALSA Genie™ Nano 5GigE Cameras are packaged in a compact, lightweight and robust all-metal housing, making them ideal for electronics inspection, industrial automation, and Intelligent Traffic Systems (ITS) applications. These cameras support the AIA GigE Vision Standard to facilitate easy integration into imaging systems.

Note: Frame rates achievable through TurboDrive™ or Burst Acquisition could vary with factors such as image quality and resolution.

Sopera LT is a free image acquisition and control software development toolkit (SDK) for Teledyne DALSA'S 1D cameras / 2D cameras / 3D Laser Profiler cameras and frame grabbers. Hardware independent in nature, Sopera LT offers a rich development ecosystem for machine vision OEMs and system integrators. Sopera LT supports image acquisition from cameras and frame grabbers based on machine vision standards including GigE Vision™, CameraLink®, CameraLink HS™, CoaXpress®, and USB3 Vision™.