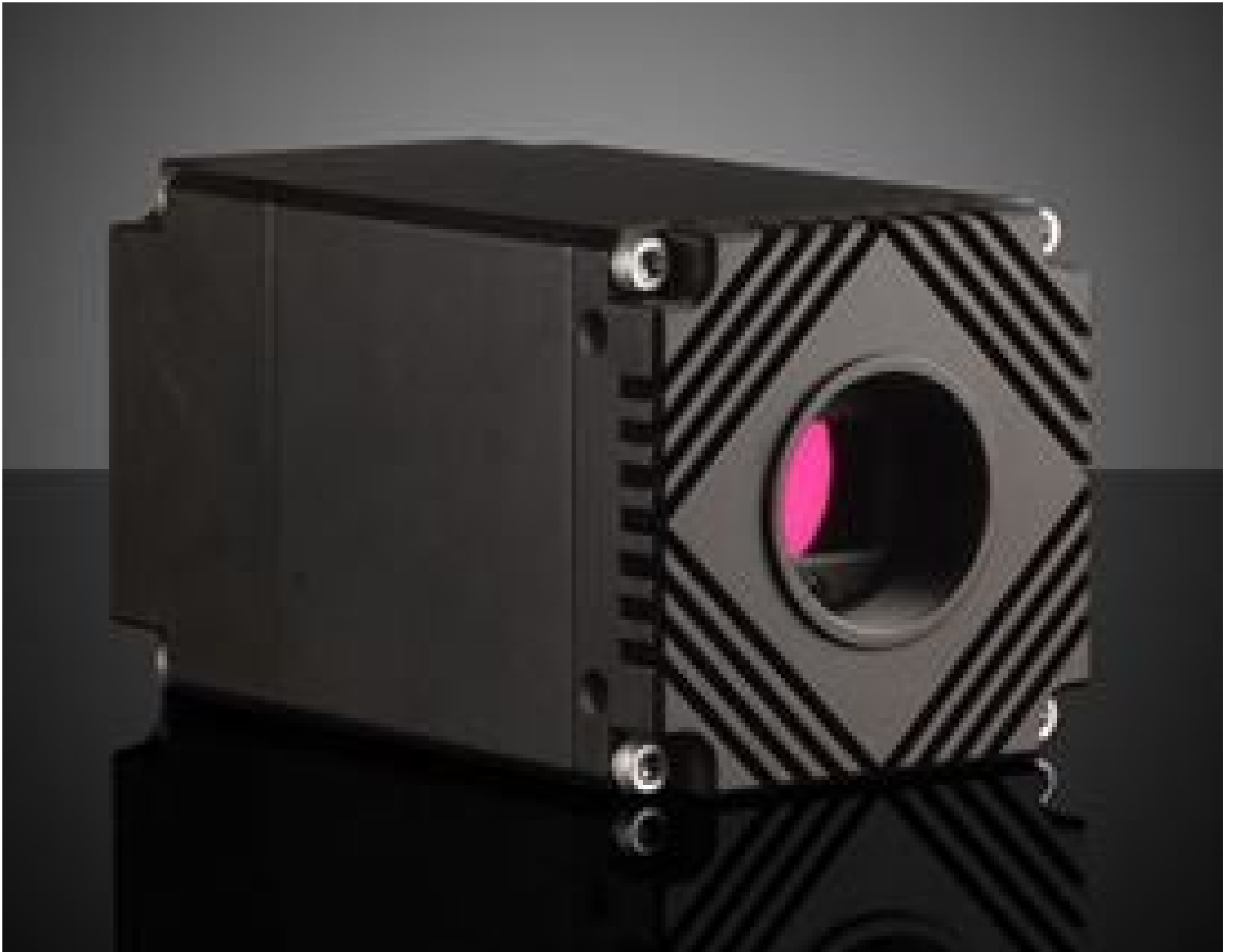


[See all 42 Products in Family](#)

# LUCID Vision Labs Atlas10 ATX162S-CC, Sony IMX532, 16.2MP, Color Camera

See More by [LUCID Vision Labs™](#)



LUCID Vision Labs Atlas10 10GigE Power over Ethernet (PoE) Cameras (Front, C-Mount)



Stock #17-119 [CONTACT US](#)

⊖ 1 ⊕ £2,680<sup>00</sup>

**ADD TO CART**

Volume Pricing	
Qty 1+	£2,680.00 each
Need More?	<a href="#">Request Quote</a>

ⓘ Prices shown are exclusive of VAT/local taxes

**Note:** This item requires accessories for use | [Learn More](#)

## Product Downloads

Color

**Spectrum:**

## General

Color Camera

**Type:**

ATX162S-CC	<b>Model Number:</b>
Lucid Vision Labs	<b>Manufacturer:</b>
Atlas10	<b>Camera Series:</b>

## Physical & Mechanical Properties

55 x 55 x 95.5 (excludes connectors and lens mount)	<b>Dimensions (mm):</b>
304	<b>Weight (g):</b>
Full	<b>Housing:</b>

## Sensor

380MB	<b>Image Buffer:</b>
1.1"	<b>Sensor Format:</b>
16.20	<b>Resolution (Megapixels):</b>
75.60	<b>Frame Rate (fps):</b>
5,320 x 3,032	<b>Pixels (H x V):</b>
2.74 x 2.74	<b>Pixel Size, H x V (µm):</b>
14.58 x 8.31	<b>Sensing Area, H x V (mm):</b>
Sony IMX532	<b>Imaging Sensor:</b>
Progressive Scan CMOS	<b>Type of Sensor:</b>
Global	<b>Shutter Type:</b>
8/10/12 Bit	<b>Pixel Depth:</b>
30µs - 10s	<b>Exposure Time:</b>
70.6	<b>Dynamic Range (dB):</b>
GigE Vision v2.0	<b>Machine Vision Standard:</b>

## Electrical

11.5 (External Power Supply) <12 (PoE+)	<b>Power Consumption (W):</b>
--	-------------------------------

## Hardware & Interface Connectivity

10GigE (PoE+)	<b>Interface:</b>
10GigE, M12	<b>Connector:</b>
Power Supply Required and Sold Separately. USA: <a href="#">#18-364</a> Europe: <a href="#">#18-364</a> Japan: <a href="#">#18-364</a> Korea: Not Available China: <a href="#">#18-364</a>	<b>Power Supply:</b>
1 opto-isolated input, 1 opto-isolated output, 2 non-isolated bi-directional ports	<b>GPIOs:</b>
Hardware Trigger (GPIO), Software Trigger, or PTP (IEEE 1588)	<b>Synchronization:</b>
Back Panel	<b>Interface Port Orientation:</b>
8-pin MB	<b>GPIO Connector Type:</b>

## Threading & Mounting

C-Mount	<b>Mount:</b>
2 x 1/4-20 with Tripod Mount Adapter <a href="#">#17-120</a>	<b>Mounting Threads:</b>

## Environmental & Durability Factors

-20 to +55      **Operating Temperature (°C):**

-30 to +60      **Storage Temperature (°C):**

## Regulatory Compliance

[View](#)      **Certificate of Conformance:**

## Product Details

- 10GBASE-T (10GigE) Ethernet Interface with PoE+
- 5.0 to 65 Megapixel Sony 4th Gen Pregius S Sensors
- Compact 55 x 55mm Form Factor
- TFL-Mount Compatible with some [TECHSPEC® CA Series FFL Lenses](#)

LUCID Vision Labs Atlas 10 10GigE Power over Ethernet (PoE) Cameras combine 4th generation Sony Pregius S sensors with 10GigE interface, delivering fast frame rates at high resolution and image quality in a compact and rugged housing. The 10GBASE-T Power over Ethernet PoE+ interface allows for data transfer speeds of up to 1.2 GB/s and can also provide power to the camera over one CAT6a cable up to 25m in length. The high bandwidth enables these cameras to run at high bit depths (10/12-bit) to maximize image quality while maintaining smooth frame rates. The back-illuminated CMOS sensors offer high sensitivity, high dynamic range, and low noise, and are actively aligned to the lens mount at the same optical axis to minimize performance discrepancies resulting from sensor tilt and rotation. LUCID Vision Labs Atlas 10 10GigE Power over Ethernet (PoE) Cameras are GigE Vision compliant and feature rugged M12 Ethernet and M8 GPIO connectors, making them ideal choices for industrial, automotive, factory automation, process control, and other machine vision applications requiring high resolutions and bandwidth.