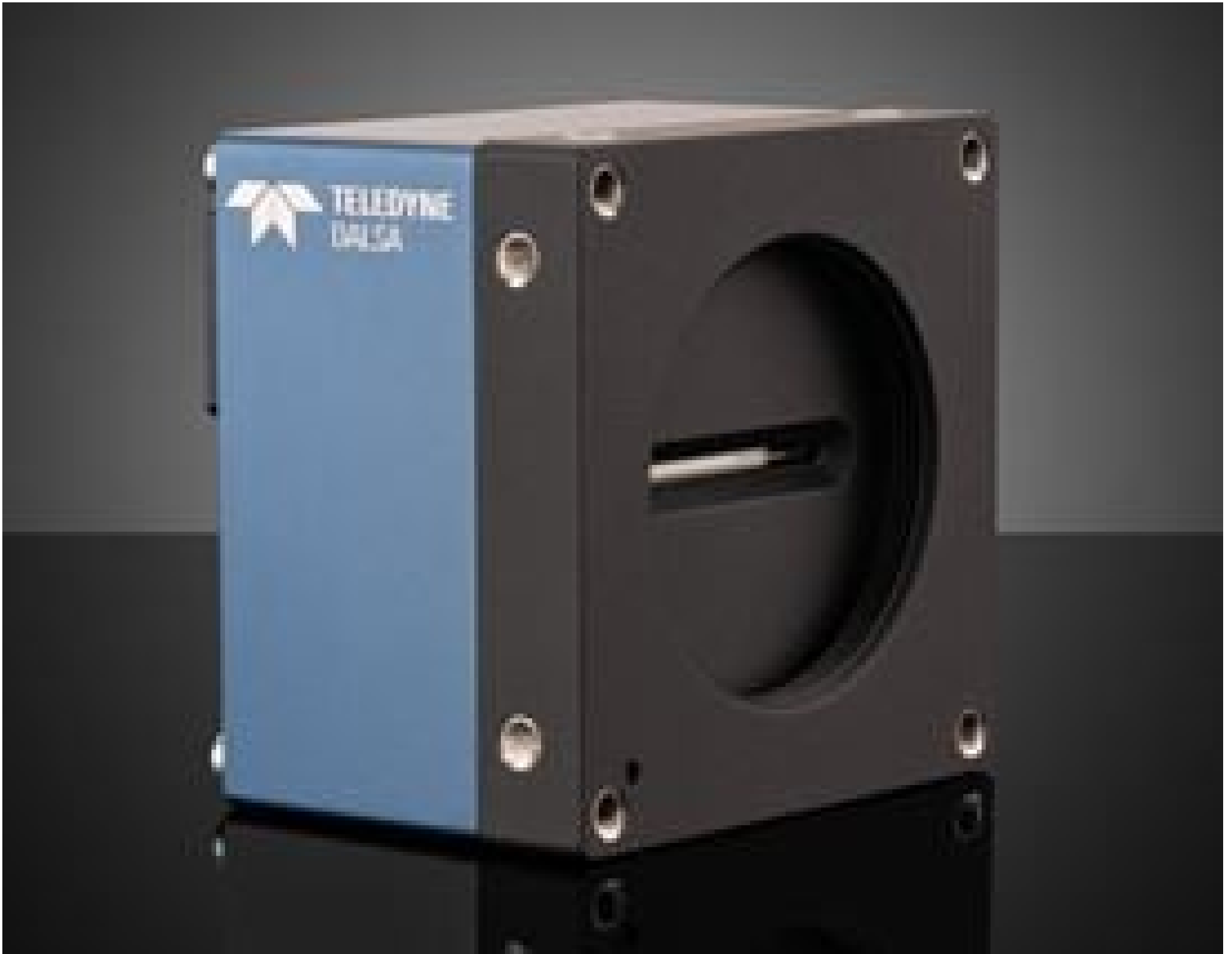


[See all 10 Products in Family](#)

# LA-GC-02K05B-00-R, DALSA Linea Line Scan GigE Camera

See More by [Teledyne DALSA](#)



Teledyne DALSA Linea GigE Line Scan Cameras - Front



Stock #71-782 **1 In Stock**

⊖ 1 ⊕ £1,352<sup>00</sup>

**ADD TO CART**

Volume Pricing	
Qty 1+	£1,352.00 each
Need More?	<a href="#">Request Quote</a>

ⓘ Prices shown are exclusive of VAT/local taxes

## Product Downloads

Color **Spectrum:**

## General

Color Camera **Type:**

LA-GC-02K05B-00-R **Model Number:**

Teledyne DALSA	<b>Manufacturer:</b>
LINEA™	<b>Camera Series:</b>
2048 x 2	<b>Resolution (Pixels):</b>
<b>Physical &amp; Mechanical Properties</b>	
62 x 62 x 46.64 (excludes connectors and lens mount)	<b>Dimensions (mm):</b>
280	<b>Weight (g):</b>
Full	<b>Housing:</b>
<b>Sensor</b>	
7.04 x 7.04	<b>Pixel Size, H x V (µm):</b>
DALSA Line Scan CMOS	<b>Type of Sensor:</b>
8 bit	<b>Pixel Depth:</b>
>60.00	<b>Dynamic Range (dB):</b>
GigE Vision v1.2	<b>Machine Vision Standard:</b>
26 (45 TurboDrive)	<b>Maximum Line Rate (kHz):</b>
<b>Electrical</b>	
<8	<b>Power Consumption (W):</b>
<b>Hardware &amp; Interface Connectivity</b>	
GigE	<b>Interface:</b>
GigE, RJ45 with Screw Locks	<b>Connector:</b>
+12 to +24V DC HD15 Connector	<b>Power Supply:</b>
Back Panel	<b>Interface Port Orientation:</b>
HD15 (High Density)	<b>GPIO Connector Type:</b>
<b>Threading &amp; Mounting</b>	
M42-Mount	<b>Mount:</b>
<b>Environmental &amp; Durability Factors</b>	
0 to +65	<b>Operating Temperature (°C):</b>
(Front Plate)	<b>Storage Temperature (°C):</b>
<b>Regulatory Compliance</b>	
<a href="#">View</a>	<b>Certificate of Conformance:</b>

## Product Details

- Line Rates from 13 – 52kHz
- 2k, 4k, or 8k Resolution Options Available
- Simple Integration with Gigabit Ethernet Connectivity
- Teledyne TurboDrive™ Enabled
- Monochrome and Color Options Available

Teledyne DALSA Linea GigE Line Scan Cameras utilize a one-dimensional array of pixels to build up a two-dimensional image at a lower cost than area scan cameras. Featuring Teledyne DALSA's proprietary TurboDrive™ technology, these cameras can sustain line rates up to 52 kHz (and up to 80 kHz in burst mode) without straining your GigE network. These cameras allow settings to be changed every line, and cycle through up to five different user-controlled configurations. For example, each line can have a different light source, lighting angle, exposure time, and gain during a single pass with the camera. Teledyne DALSA Linea GigE Line Scan Cameras feature higher dynamic ranges than alternative image capture methods and are available with 2k, 4k, or 8k resolutions. These cameras are ideal for automated optical inspections, sorting systems, materials grading and inspections, and general-purpose machine vision applications. Download this [whitepaper](#) for more information on applications that would benefit from line scan camera technology.

**Note:** An H15 cable is required for GPIO operation and is not included with these cameras.

**Sapera LT** is a free image acquisition and control software development toolkit (SDK) for Teledyne DALSA'S 1D cameras / 2D cameras / 3D Laser Profiler cameras and frame grabbers. Hardware independent in nature, Sapera LT offers a rich development ecosystem for machine vision OEMs and system integrators. Sapera LT supports image acquisition from cameras and frame grabbers based on machine vision standards including GigE Vision™, CameraLink®, CameraLink HS™, CoaXpress®, and USB3 Vision™.

