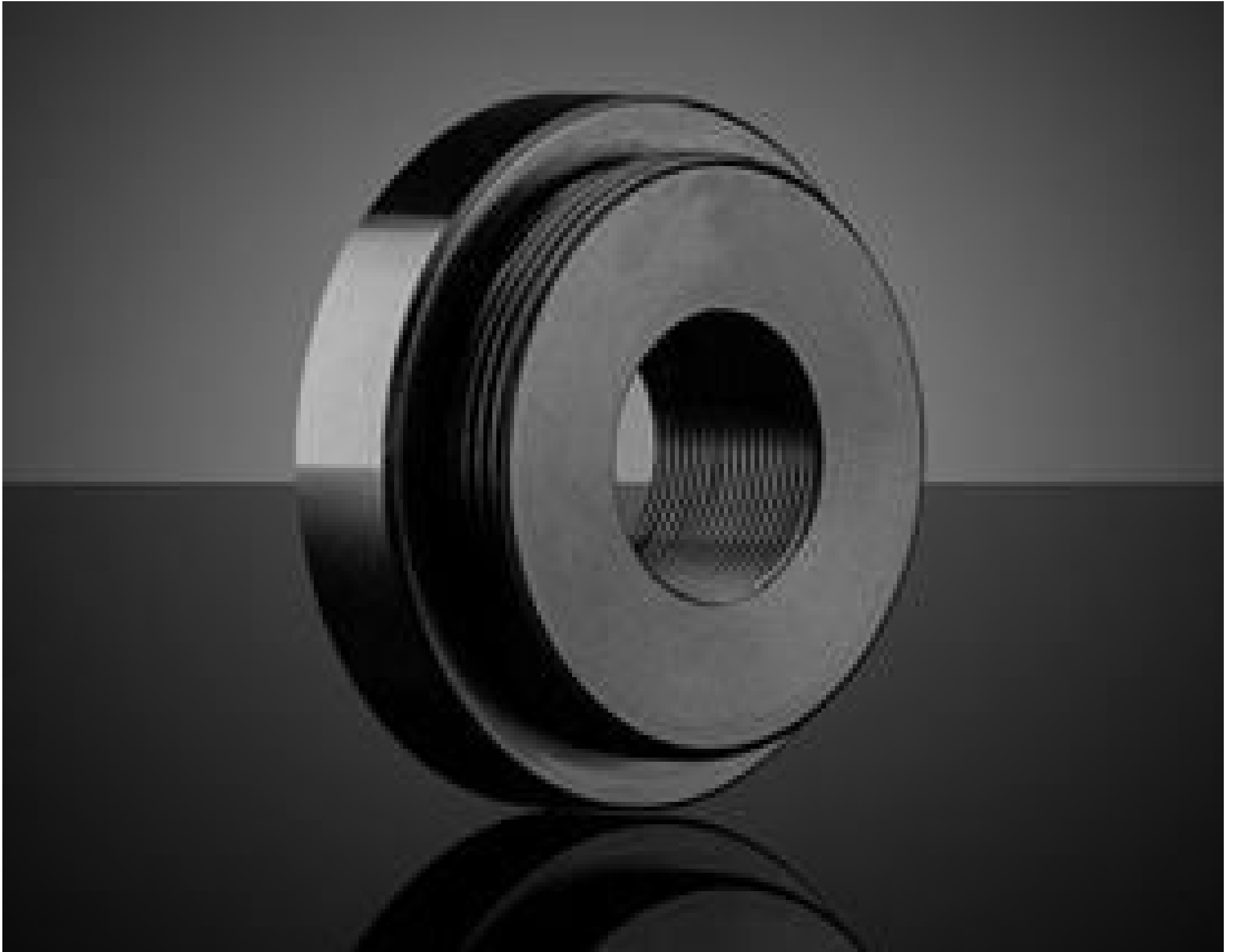


TECHSPEC® S-Mount Female to C-Mount Male Step-Down Adapter



Female S to Male C Adapter, #63-945

Stock **#63-945** **20+ In Stock**

⊖ 1 ⊕ £47⁰⁰

ADD TO CART

Volume Pricing	
Qty 1-4	£47.60 each
Qty 5-9	£42.40 each
Qty 10-25	£39.20 each
Need More?	Request Quote

ⓘ Prices shown are exclusive of VAT/local taxes

Product Downloads

General

Thread Adapter **Type:**

Thread Adapter **Function:**

Physical & Mechanical Properties

Extension Length (mm):

6.0

Total Length (mm):

10.0

Clear Aperture CA (mm):

12.0

Construction:

Black Anodized Aluminum (6061-T6)

Outer Diameter (mm):

30.0

Threading & Mounting

Thread Type:

S-Mount to C-Mount

Thread Termination:

Female to Male

Regulatory Compliance

RoHS 2015:

[Compliant](#)

Certificate of Conformance:

[View](#)

REACH 241:

[Compliant](#)

Product Details

- Adapt All Available Tube System Thread Types to One Another
- Low Profile Design to Minimize Extension Length
- Black Anodized Aluminum Construction

TECHSPEC® C, S, and T-Mount Thread Adapters ensure that all [Tube System](#) thread types are compatible with one another. This includes C, S, and T-Mount threads, TECHSPEC Multi-Element Tube System threads (M29 x 0.75), ID1 (1.035" x 40 TPI, equivalent to SM1 thread specifications), and ID05 (0.535" x 40 TPI, equivalent to SMD5 thread specifications). All thread adapters have a low-profile design to minimize extension length. They also have a black anodized aluminum construction to ensure minimal reflections within a system. TECHSPEC C, S, and T-Mount Thread Adapters are ideal for system expansion and work with any optical component that uses the supported thread types.