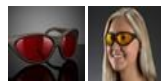


[See all 111 Products in Family](#)

## LS14 Adjustable Temples Wrap Around Frame, Laser Safety Glasses



Image represents frame style only. Filter color will vary by product specification.



Stock #12-743 **1 In Stock**

⊖ 1 ⊕ £180.<sup>00</sup>

**ADD TO CART**

Volume Pricing	
Qty 1-5	£180.00 each
Qty 6-10	£162.00 each
Qty 11-25	£144.00 each
Need More?	<a href="#">Request Quote</a>

ⓘ Prices shown are exclusive of VAT/local taxes

### Product Downloads

### General

Adjustable Temples Wrap Around

Style:

**EN 207/208 Ratings:**  
D LB7 + R LB4 @ 180-315nm, D LB5 + IRMLB6 @  
315-534nm, DIRMLB5 @ 850-925nm, D LB5 + IRM

Polymer **Filter Material:**

LS14 **Filter:**

## Optical Properties

**Optical Density OD (Average):**  
>7 @ 190 - 534nm  
>5 @ 850 - 925nm  
>6 @ 925 - 1070nm  
>7 @ 960 - 1064nm

Amber **Color:**

35 **Visible Light Transmission VLT (%):**

## Regulatory Compliance

[Compliant](#) **RoHS 2015:**

[View](#) **Certificate of Conformance:**

## Product Details

- CE Certified Laser Radiation Protection
- Designs for Ultraviolet, Visible, and Infrared Lasers
- Available in Eight Styles, Detailed Below

Laser Safety Glasses and Goggles feature high optical density at their specified wavelength range to protect against laser radiation. The durable lenses are molded with laser-protective absorptive dyes, causing accidental scratches to have no effect on their performance. Designs that protect against ultraviolet, visible, and infrared lasers are available. All Laser Safety Eyewear products are CE certified and come with a hard case, neck cord, and microfiber cloth.

Laser Safety Eyewear are available in eight styles:

**Laser Safety Goggles:** Fit over prescription glasses and are vented to prevent fogging, with a standard "lab goggle" shape.

**Fit Over Rx Glasses:** Fit over prescription glasses and have side-shields for a wide field of view.

**Adjustable Temples, Wrap Around Frame Glasses:** Feature a wrap around design with adjustable temple lengths and angle.

**Adjustable Bridge, Wrap Around Frame Glasses:** Feature a wrap around design with an adjustable bridge and comfort fit temples.

**Vented Fit Over:** Feature a more modern, vented design, meant to be worn over prescription lenses.

**Vented, Adjustable Temples:** Feature a more modern, vented design, with adjustable temples for increased comfort for long term use.

**1 + 1 Flip Up:** Features two different laser safety filters, one in the base frame and one in the flip up attachment. Ideal when working with more than one laser with largely different wavelengths.

**Rx Flip Up:** Features an empty base frame, allowing for the insertion of prescription lenses, with a laser safety filter in the flip up attachment.

**XL Fit Over Rx :** Features a larger frame size to fit over larger Rx glasses.

**Warning:** Because of the potential for eye damage, the degree of protection required in each circumstance should be determined by the Laser Safety Officer, the industrial hygienist, or the individual responsible for the safety program.