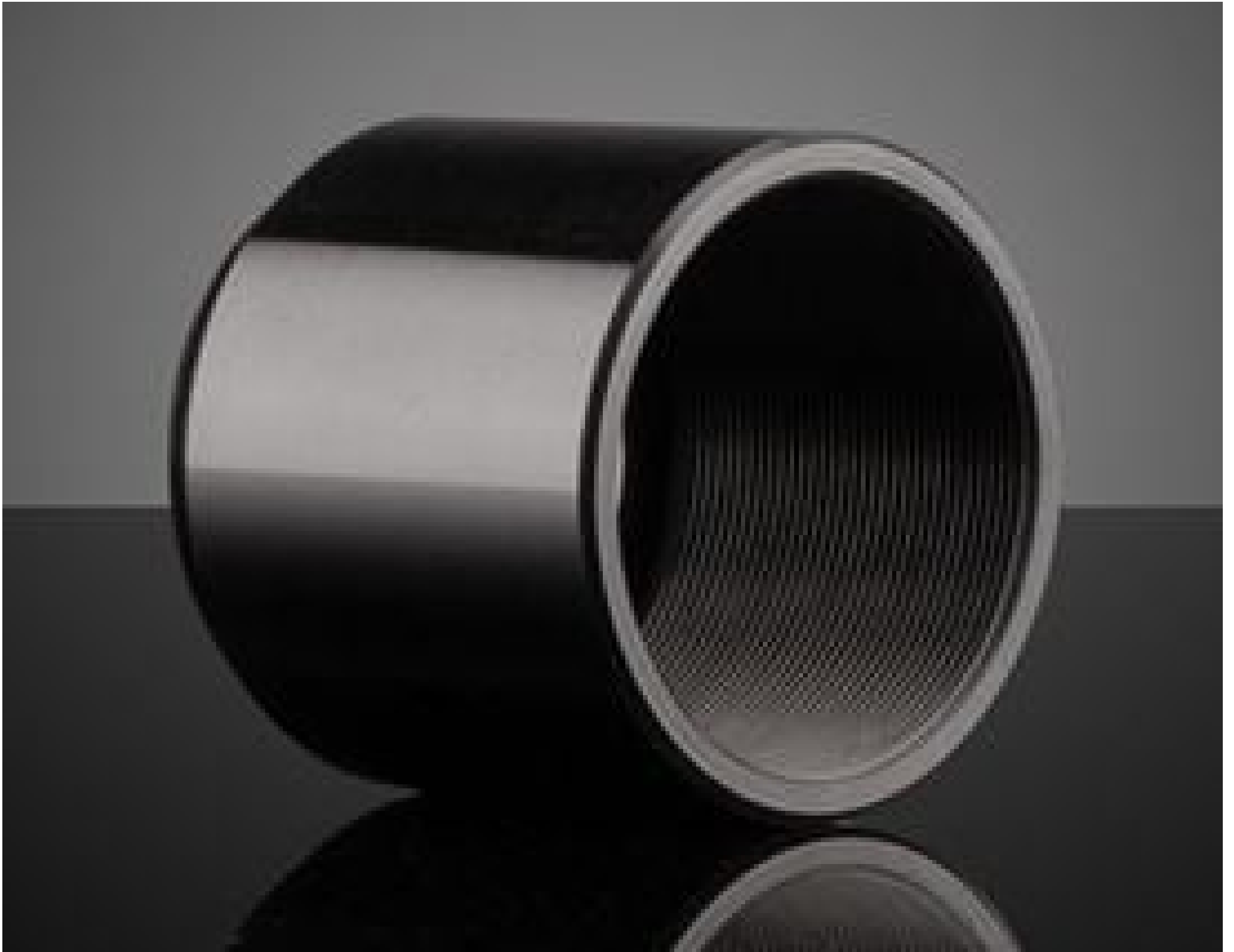


## TECHSPEC® 80mm Length, Outer Tube



TECHSPEC Multi-Element Outer Tubes

Stock **#37-903** **20+ In Stock**

1  £28<sup>00</sup>

**ADD TO CART**

| Volume Pricing |                               |
|----------------|-------------------------------|
| Qty 1-4        | £28.60 each                   |
| Qty 5-9        | £25.52 each                   |
| Qty 10+        | £24.00 each                   |
| Need More?     | <a href="#">Request Quote</a> |

**!** Prices shown are exclusive of VAT/local taxes

Product Downloads

## SPECIFICATIONS

### General

Extension Tube (Fixed)      **Function:**

## Physical & Mechanical Properties

80.0      **Extension Length (mm):**

80.0      **Total Length (mm):**

**Construction:**  
Matte Black Anodized Aluminum (6061-T6)

32.0      **Outer Diameter (mm):**

## Threading & Mounting

M29 x 0.75      **Thread Type:**

## Regulatory Compliance

**RoHS 2015:**  
[Compliant](#)

**Certificate of Conformance:**  
[View](#)

**REACH 241:**  
[Compliant](#)

## PRODUCT DETAILS

- Continuous M29 x 0.75 Internal Threading for Easy Lens Spacing
- Prevent Unwanted External and Stray Light from Entering the System
- Available in Multiple Lengths for Compact Systems
- Click [Here](#) to See How to Use the Multi-Element Tube System Components to Build an Optical System.

TECHSPEC® Multi-Element Outer Tubes provide a compact and contained system mounting solution. Available in five different lengths, these outer tubes allow for control of overall system length. The enclosed design and matte finish helps prevent unwanted external and stray light from entering the optical system. TECHSPEC® Multi-Element Outer Tubes feature M29 x 0.75 internal threads along the entire optical axis, allowing for infinite optical spacing adjustment for both [TECHSPEC® Multi-Element Inner Single Optic Mounts](#) and [TECHSPEC® Multi-Element Inner Pair Optic Mounts](#). For harsh environment applications, the Multi-Element Retaining Ring Set ([#37-774](#)) is highly recommended to lock in lens spacing.

**Note:** The [TECHSPEC® Multi-Element Tube System Accessories](#) are recommended for easy system expansion or integration. The Multi-Element 2" Square Cage Interface Plate ([#11-213](#)) can be used to mount a Multi-Element Tube System Assembly to a [TECHSPEC Stainless Steel Mounting Post](#).