

**TECHSPEC® 76.6mm Dia x 849.9mm FL Achromatic Lens**



Stock #30-976 **7 In Stock**

- 1 + £456.<sup>00</sup>

**ADD TO CART**

| Volume Pricing |                               |
|----------------|-------------------------------|
| Qty 1-5        | £456.00 each                  |
| Qty 6-25       | £388.00 each                  |
| Qty 26-49      | £364.80 each                  |
| Need More?     | <a href="#">Request Quote</a> |

! Prices shown are exclusive of VAT/local taxes

Product Downloads

**General**

Achromatic Lens **Type:**

**Physical & Mechanical Properties**

76.56 +0.00/-0.08 **Diameter (mm):**

73.25 **Clear Aperture CA (mm):**

|                             |                             |
|-----------------------------|-----------------------------|
| 5.00                        | Centering (arcmin):         |
| 13.08                       | Center Thickness CT 1 (mm): |
| 10.16                       | Center Thickness CT 2 (mm): |
| -1227.86                    | Radius R <sub>4</sub> (mm): |
| 21.27                       | Edge Thickness ET (mm):     |
| Unmounted, Airspaced 0.10mm | Construction:               |
| Protective as needed        | Bevel:                      |

## Optical Properties

|  |   |
|--|---|
| 849.96                                 | Effective Focal Length EFL (mm):            |
| ±1                                     | Focal Length Tolerance (%):                 |
| 838.69                                 | Back Focal Length BFL (mm):                 |
| 587.6                                  | Focal Length Specification Wavelength (nm): |
| 497.21                                 | Radius R <sub>1</sub> (mm):                 |
| -345.82                                | Radius R <sub>2</sub> (mm):                 |
| -344.20                                | Radius R <sub>3</sub> (mm):                 |
| <a href="#">N-BK7 / N-SF2</a>          | Substrate: <input type="checkbox"/>         |
| 60-40                                  | Surface Quality:                            |
| 11.1                                   | f#:   |
| 0.05                                   | Numerical Aperture NA:                      |
| MgF <sub>2</sub> (400-700nm)           | Coating:                                    |
| R <sub>avg</sub> ≤ 1.75% @ 400 - 700nm | Coating Specification:                      |
| 400 - 700                              | Wavelength Range (nm):                      |

## Regulatory Compliance

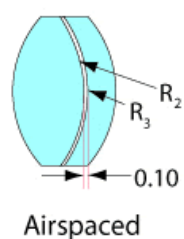
|                           |                             |
|---------------------------|-----------------------------|
| <a href="#">View</a>      | Certificate of Conformance: |
| <a href="#">Compliant</a> | Reach 240:                  |

## Product Details

- Offered in Cemented or Air-Spaced Designs
- Mounted Versions Available for Easy Integration
- Feature MgF<sub>2</sub> Anti-Reflection Coating

TECHSPEC® Large Precision Achromatic Lenses offer near-diffraction limited performance across the designated wavelength range. These color-corrected achromatic lenses feature long focal lengths and are available in either cemented or air-spaced designs. The lenses have a MgF<sub>2</sub> anti-reflection coating and are available in diameters up to 140mm. TECHSPEC® Large Precision Achromatic Lenses, in the mounted version, feature a male mounting thread for easy integration into optical systems. Adhesive foil spacers and mounting instructions are included for unmounted, air-spaced achromatic lenses.

## Technical Information



## Coating Curves

---