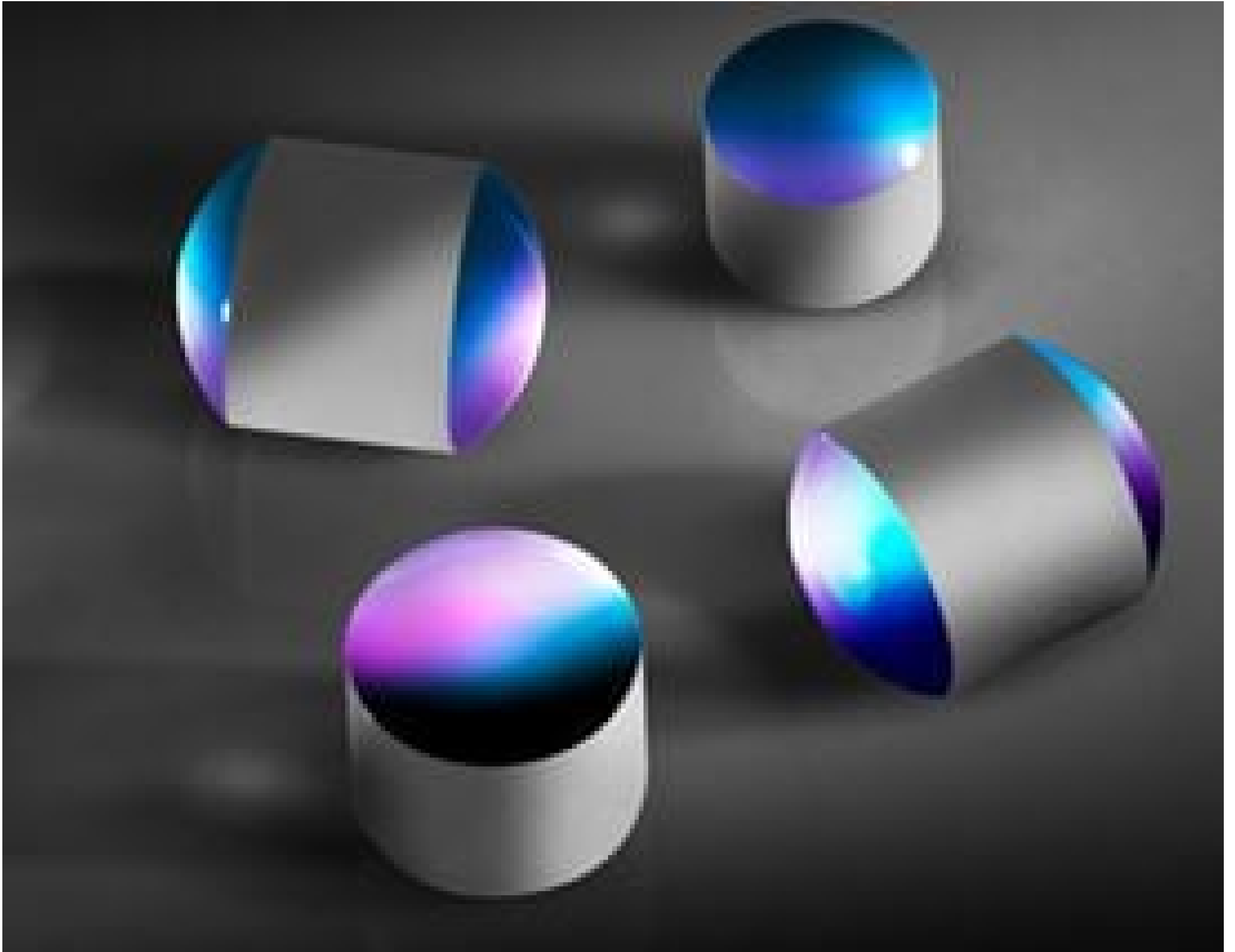


**TECHSPEC® 4.0mm Diameter x 4.0mm Length, N-LASFN9 Half-Drum Lens**



Stock #46-531 CLEARANCE **1 In Stock**

£19<sup>40</sup>

**ADD TO CART**

| Volume Pricing |                               |
|----------------|-------------------------------|
| Qty 1+         | £19.40 each                   |
| Need More?     | <a href="#">Request Quote</a> |

Prices shown are exclusive of VAT/local taxes

Product Downloads

**General**

Half-Drum Lens Type:

**Physical & Mechanical Properties**

4.00 Diameter (mm):

4.00 Length (mm):

±30 Length Tolerance (µm):

Radius R (mm):  
2.50

Radius Tolerance (µm):  
+0/-1.5

Diameter Tolerance (µm):  
+0/-50

## Optical Properties

Substrate:   
N-LASF9

Coating:  
Uncoated

Wavelength Range (nm):  
380 - 2500

Index of Refraction (n<sub>d</sub>):  
1.850

Surface Quality:  
40-20

## Regulatory Compliance

Certificate of Conformance:  
[View](#)

## Need different specs or modifications?

Edmund Optics offers comprehensive custom manufacturing services for optical and imaging components tailored to your specific application requirements. Whether in the prototyping phase or preparing for full-scale production, we provide flexible solutions to meet your needs. Our experienced engineers are here to assist—from concept to completion.

Our capabilities include:

- Custom dimensions, materials, coatings, and more
- High-precision surface quality and flatness
- Tight tolerances and complex geometries
- Scalable production—from prototype to volume

Learn more about our [custom manufacturing capabilities](#) or submit an inquiry [here](#).

## Product Details

- Easier to Mount and Handle Than Standard Ball Lenses

Drum lenses are glass spheres, ground down axially to provide a mounting surface. The ground circumference D simplifies handling issues typically associated with ball lenses. Ideal for optical transmission in fiber communications. Type B Drum lenses have a polished plano-surface for direct fiber contact and perform as elongated PCX lenses.

## Technical Information

| D                              | Radius R | Length | Length L2 | Stock No. |
|--------------------------------|----------|--------|-----------|-----------|
| <b>Type A Drum Lenses</b>      |          |        |           |           |
| 2mm                            | 1.25mm   | 2.5mm  | 1.5mm     | #45-548   |
|                                |          |        |           | #45-739   |
|                                |          |        |           | #45-836   |
|                                |          |        |           | #45-663   |
|                                |          |        |           | #45-743   |
| 2.4mm                          | 1.5mm    | 3mm    | 1.8mm     | #45-549   |
|                                |          |        |           | #45-837   |
|                                |          |        |           | #45-664   |
|                                |          |        |           | #45-744   |
| 3.2mm                          | 2mm      | 4mm    | 2.4mm     | #45-550   |
|                                |          |        |           | #45-741   |
|                                |          |        |           | #45-838   |
|                                |          |        |           | #45-665   |
| 4mm                            | 2.5mm    | 5mm    | 3mm       | #45-745   |
|                                |          |        |           | #45-551   |
|                                |          |        |           | #45-839   |
|                                |          |        |           | #45-742   |
| #45-666                        |          |        |           |           |
|                                |          |        |           |           |
| <b>Type B Half-Drum Lenses</b> |          |        |           |           |
| 2mm                            | 1.25mm   | 2mm    | 1.5mm     | #46-524   |
|                                |          |        |           | #46-528   |

|       |       |       |       |         |
|-------|-------|-------|-------|---------|
| 2.4mm | 1.5mm | 2.4mm | 1.8mm | #46-525 |
|       |       |       |       | #46-529 |
| 3.2mm | 2mm   | 3.2mm | 2.4mm | #46-526 |
|       |       |       |       | #46-530 |
| 4mm   | 2.5mm | 4mm   | 3mm   | #46-527 |
|       |       |       |       | #46-531 |

