

[See all 6 Products in Family](#)

## 40mm Dia. x 200mm FL, MgF<sub>2</sub> Coated, DCX N-K5 Lens



Stock #32-911 CLEARANCE **20+ In Stock**

[Other Coating Options](#)

⊖ 1 ⊕ £18<sup>00</sup>

**ADD TO CART**

Volume Pricing	
Qty 1+	£18.60 each
Need More?	<a href="#">Request Quote</a>

**i** Prices shown are exclusive of VAT/local taxes

### Product Downloads

### General

Double-Convex Lens **Type:**

### Physical & Mechanical Properties

40.00 +0.00/-0.10 **Diameter (mm):**

<1 **Centering (arcmin):**

**Center Thickness CT (mm):**

8.00 ±0.10

Edge Thickness ET (mm):

6.07

Clear Aperture CA (mm):

39

Bevel:

Protective as needed

### Optical Properties

Effective Focal Length EFL (mm):

200.00 @ 587.6nm

Back Focal Length BFL (mm):

197.36

Coating:

MgF<sub>2</sub> (400-700nm)

Coating Specification:

R<sub>avg</sub> ≤ 1.75% @ 400 - 700nm

Substrate:

N-K5

Surface Quality:

40-20

Power (P-V) @ 632.8nm:

1.5λ

Irregularity (P-V) @ 632.8nm:

λ/4

Focal Length Tolerance (%):

±1

f#:

5.00

Numerical Aperture NA:

0.10

Wavelength Range (nm):

400 - 700

Damage Threshold, By Design:

10 J/cm<sup>2</sup> @ 532nm, 10ns

### Regulatory Compliance

Reach 224:

Compliant

Certificate of Conformance:

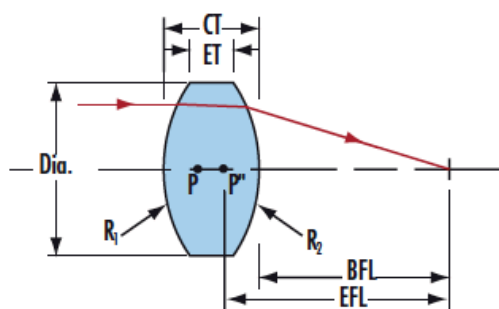
View

## Product Details

- N-K5 Substrate
- Various Anti-Reflection (AR) Coatings
- PCX and DCX Options Available

N-K5 Lenses are available in various diameters, focal lengths, as well as Plano-Convex and Double-Convex form factors. Anti-reflective coatings covering the VIS to NIR make these ideal for multiple applications.

## Technical Information



## Coating Curves

## Compatible Mounts

