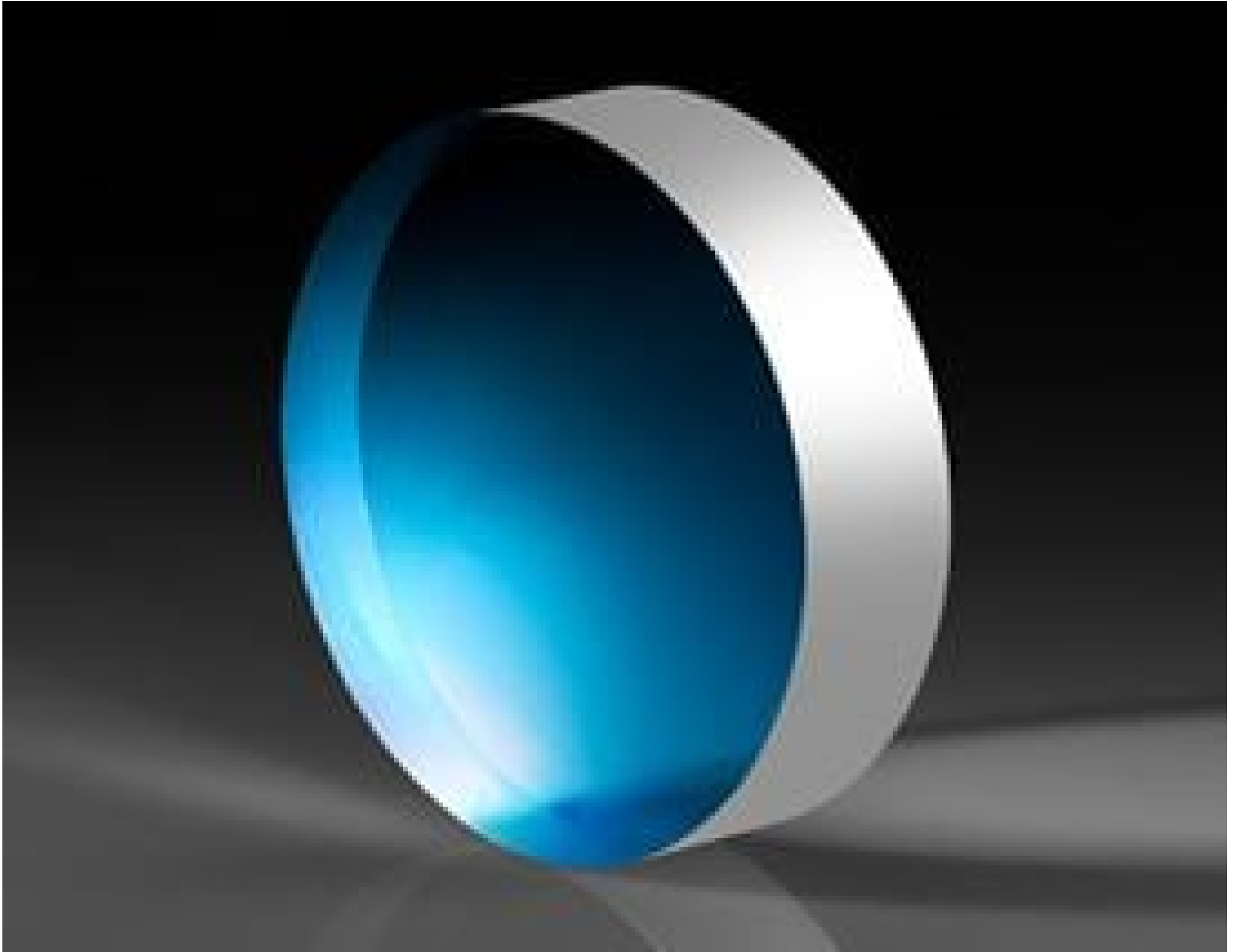


[See all 16 Products in Family](#)

TECHSPEC® 4" Dia. N/10 Fused Silica Dual Surface Flat



Stock #43-430 [CONTACT US](#)

- 1 + £1,076.⁰⁰

ADD TO CART

Volume Pricing	
Qty 1-5	£1,076.00 each
Qty 6-10	£968.00 each
Qty 11-25	£916.00 each
Need More?	Request Quote

Prices shown are exclusive of VAT/local taxes

Product Downloads

General

Interferometry Window

Type:

Glass

Type of Window:

Physical & Mechanical Properties

91.40 **Clear Aperture CA (mm):**

4.00 ±0.04 **Diameter (inches):**

101.60 ±1.0 **Diameter (mm):**

0.75 ±0.06 **Thickness (inches):**

19.05 ±1.5 **Thickness (mm):**

<3 **Parallelism (arcmin):**

Protective as needed **Bevel:**

Dual Surface **Construction:**

Fine Ground **Edges:**

0.16 **Poisson's Ratio:**

73 **Young's Modulus (GPa):**

522.00 **Knoop Hardness (kg/mm²):**

Optical Properties

Uncoated **Coating:**

Fused Silica **Substrate:**

1.458 **Index of Refraction (n_d):**

60-40 **Surface Quality:**

67.8 **Abbe Number (v_d):**

200 - 2200 **Wavelength Range (nm):**

λ/10 **Surface Flatness (P-V):**

Material Properties

2.20 **Density (g/cm³):**

Coefficient of Thermal Expansion CTE (10⁻⁶/°C):
0.52 (+5 to +35°C)
0.57 (0 to +200°C)
0.48 (-100 to +200°C)

Regulatory Compliance

Compliant **RoHS 2015:**

Compliant **Reach 211:**

View **Certificate of Conformance:**

Product Details

- λ/10 and λ/20 Surface Flatness Options
- Each λ/20 Flat 76.2mm and Larger Includes a Certificate of Calibration
- Extended Lifetime in Contact Measurement Applications
- [Single Surface Optical Flats](#) Also Available

TECHSPEC® Precision Dual Surface Optical Flats are precision ground and polished to the stated accuracies on both surfaces so that either face may be used for test applications. Both surfaces are tested and certified by our Zygo Interferometer. Each flat ships in a durable storage case for permanent protection. TECHSPEC® Precision Dual Surface Optical Flats specified for λ/20 flatness that are 76.2mm or larger also include a certificate of calibration. These dual surface flats are uncoated and offered in diameters ranging from 25.40 to 304.80mm.

Compatible Mounts

