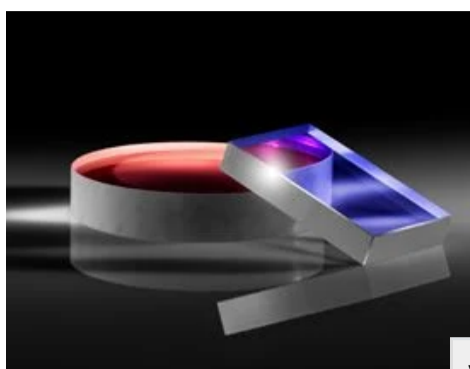


TECHSPEC® 38.1 x 25.4mm Laser Mirror Substrate



TECHSPEC® Laser Mirror Substrates

Stock #37-728 **20+ In Stock**

1 **£131^{.20}**

ADD TO CART

Volume Pricing	
Qty 1-10	£131.20 each
Qty 11-25	£115.20 each
Qty 26-50	£102.40 each
Need More?	Request Quote

Prices shown are exclusive of VAT/local taxes

Product Downloads	
STEP:step	PDF Drawing:pdf
IGES:igs	eDrawing:eprt
EO Spec Sheet	Download All

General

Type: Laser Mirror Substrate

Physical & Mechanical Properties

Parallelism (arcmin):	<3	Clear Aperture (%):	85
Back Surface:	Commercial Polish	Dimensions (mm):	38.1 x 25.4 +0.00/-0.10
Thickness (mm):	6.35 ±0.20	Clear Aperture CA (mm):	32.39 x 21.59
Edges:	Ground, protective bevel as needed		

Optical Properties

Surface Quality:	10-5	Surface Flatness (P-V):	λ/10
Coating:	Uncoated	Substrate: ⓘ	Fused Silica (Corning 7980)

Regulatory Compliance

RoHS 2015:	Compliant	Reach 209:	Compliant
Certificate of Conformance:	View		

Product Details

- $\lambda/10$ and $\lambda/20$ Surface Flatness and 10^{-5} Surface Quality
- High Quality Fused Silica Substrates
- Imperial Sizes with Circular or Rectangular Geometries
- **Window Substrates** Also Available

TECHSPEC® Laser Mirror Substrates are manufactured from high quality fused silica and are designed for use with high power laser sources. These mirrors feature excellent surface specifications, including $\lambda/10$ and $\lambda/20$ surface flatness and 10^{-5} surface quality, to limit the possibility of reduced performance due to surface defects. The high surface quality of these mirror blanks also makes them ideal for use in demanding intra-cavity laser applications. TECHSPEC Laser Mirror Substrates are available in standard imperial sizes, with either circular or rectangular geometries. Please contact us if your application requires a custom size laser mirror substrate.

Related Products

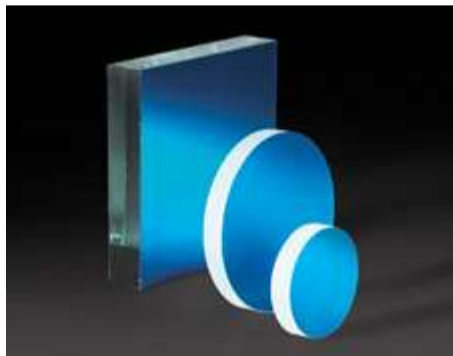


Kinematic Optical Mirror Mounts



Kinematic Square Optical Mounts

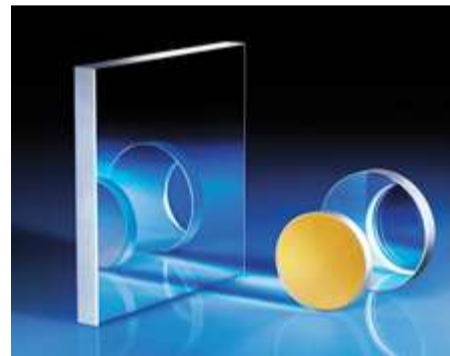
Frequently Purchased Together



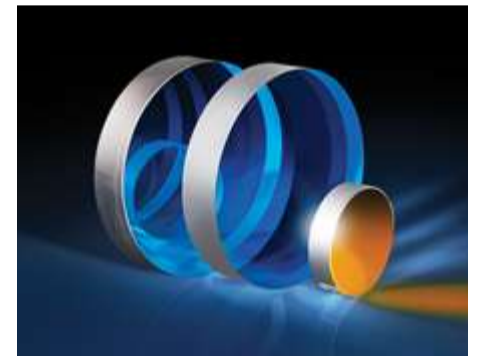
#43-532 - 25mm Diameter Laser Diode Mirror
£25.60



#45-428 - 4.0mm Dia. x 6.0mm FL, MgF₂ Coated, Plano-Convex Lens
£48.00



#32-940 - 5mm Dia Enhanced Aluminum, 4-6 λ Mirror
£22.80



#43-416-577 - 2" Dia. Protected Silver, $\lambda/20$ Flat Fused Silica
£340.00

Compatible Mounts

	Title	Type	Compare	Stock Number	Price	Buy
MORE+	1.5" Reverse Angle Mirror Mount	Adjustable - Tip-Tilt		#37-922	£68.80 Request Quote	12 In Stock <input type="text" value="1"/> <input type="button" value="🛒"/>
MORE+	60mm sq - Rectangular Bar Clamp	Fixed		#54-995	£100.80 Request Quote	20+ In Stock <input type="text" value="1"/> <input type="button" value="🛒"/>
MORE+	3.0" Angle Mirror Mount	Adjustable - Tip-Tilt		#36-481	£200.00 Request Quote	20+ In Stock <input type="text" value="1"/> <input type="button" value="🛒"/>

Check out our full selection of mounts [here](#).

Resources

Media Type

- Application Note
- Technical Tool
- Trending in Optics
- Video
- Published Article
- FAQ
- Glossary
- Scientific Paper

APPLICATION NOTE

An Introduction to Optical Coatings

TECHNICAL TOOL

Gaussian Beams Calculator

APPLICATION NOTE

Effects of Laser Mirror Surface Flatness

TRENDING IN OPTICS

High Reflectivity Mirrors for Laser...

WEBINARS

High Reflectivity Mirrors for Laser...

APPLICATION NOTE

Highly Reflective Coatings

[View More](#)