

**TECHSPEC®**

# 35mm, Enhanced Aluminum, N-BK7 Right Angle Prism Mirror (Leg Coated)


 Stock #25-690 **3 In Stock**

 - 1 + **£227<sup>.20</sup>**
[ADD TO CART](#)

| Volume Pricing |                               |
|----------------|-------------------------------|
| Qty 1-5        | £227.20 each                  |
| Qty 6-25       | £181.60 each                  |
| Qty 26-49      | £170.40 each                  |
| Need More?     | <a href="#">Request Quote</a> |

ⓘ Prices shown are exclusive of VAT/local taxes

| Product Downloads |                              |
|-------------------|------------------------------|
| STEP:step         | Curve:pdf                    |
| PDF Drawing:pdf   | IGES:igs                     |
| eDrawing:eprt     |                              |
| EO Spec Sheet     | <a href="#">Download All</a> |

## General

**Type:** Right Angle Mirror

## Physical & Mechanical Properties

|                                   |                      |                                    |       |
|-----------------------------------|----------------------|------------------------------------|-------|
| <b>Clear Aperture CA (mm):</b>    | 31.5                 | <b>Dimensional Tolerance (mm):</b> | ±0.1  |
| <b>Bevel:</b>                     | Protective as needed | <b>Clear Aperture (%):</b>         | 90.00 |
| <b>Length of Hypotenuse (mm):</b> | 49.50                | <b>Length of Legs (mm):</b>        | 35.00 |

## Optical Properties

|                                   |                                     |  |                                     |
|-----------------------------------|-------------------------------------|--|-------------------------------------|
| <b>Coating:</b>                   | Enhanced Aluminum (450-650nm)       | <b>Substrate:</b> ⓘ                      | <b>N-BK7</b>                        |
| <b>Surface Quality:</b>           | 40-20                               | <b>Angle Tolerance (arcmin):</b>         | ±2                                  |
| <b>Coating Specification:</b>     | R <sub>avg</sub> >95% @ 450 - 650nm | <b>Wavelength Range (nm):</b>            | 450 - 650                           |
| <b>Coating Type:</b>              | Metal                               | <b>Damage Threshold, Reference:</b> ⓘ    | 0.2 J/cm <sup>2</sup> @ 532nm, 10ns |
| <b>Power (fringes) @ 632.8nm:</b> | 1.25                                | <b>Irregularity (fringes) @ 632.8nm:</b> | 0.50                                |

## Regulatory Compliance

RoHS 2015: **Compliant**

Certificate of Conformance: **View**

Reach 247: **Compliant**

## Need different specs or modifications?

Edmund Optics offers comprehensive custom manufacturing services for optical and imaging components tailored to your specific application requirements. Whether in the prototyping phase or preparing for full-scale production, we provide flexible solutions to meet your needs. Our experienced engineers are here to assist—from concept to completion.

Our capabilities include:

- Custom dimensions, materials, coatings, and more
- High-precision surface quality and flatness
- Tight tolerances and complex geometries
- Scalable production—from prototype to volume

Learn more about our [custom manufacturing capabilities](#) or submit an inquiry [here](#).

## Product Details

- Splits Input Image Into Two Paths Separated by 180°
- Variety of Sizes and Broadband Coatings Available
- Additional **Right Angle Prism** Options Available

TECHSPEC® Right Angle Prism Mirrors (Leg Coated) are constructed from right angle prisms with a mirror coating on the two legs and an uncoated hypotenuse. The mirrored surfaces form a precise 90° angle, ideal for splitting an image from a single imaging lens onto two different cameras, or for combining two images onto a single camera.

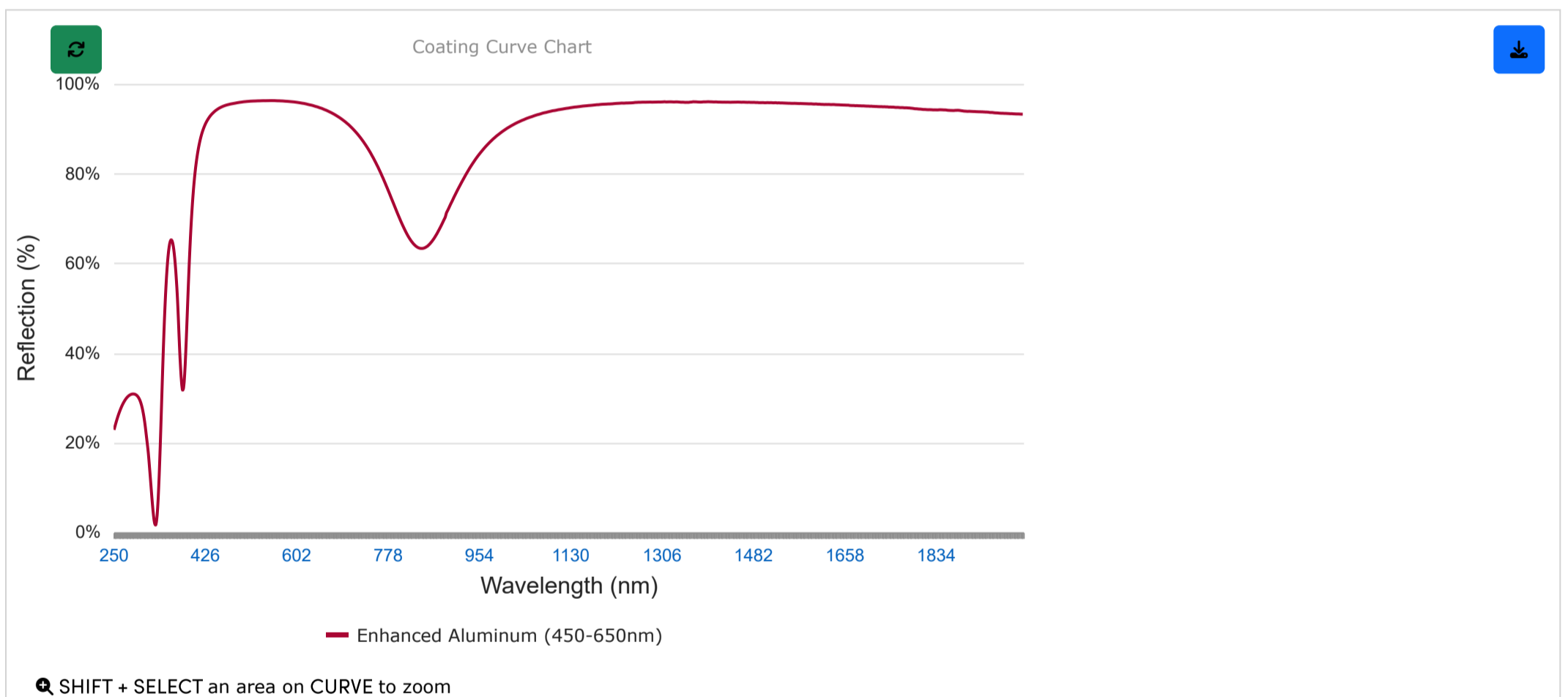
## Technical Information

| Stock No.               | Coating                        | A    | B      | C    |
|-------------------------|--------------------------------|------|--------|------|
| <a href="#">#49-412</a> | Enhanced Aluminum (450-650nm)  | 5mm  | 7.1mm  | 5mm  |
| <a href="#">#65-847</a> | Protected Gold (700-10000nm)   |      |        |      |
| <a href="#">#21-185</a> | Protected Silver (450-10000nm) |      |        |      |
| <a href="#">#47-004</a> | Enhanced Aluminum (450-650nm)  | 10mm | 14.1mm | 10mm |
| <a href="#">#47-237</a> | Protected Gold (700-10000nm)   |      |        |      |
| <a href="#">#21-186</a> | Protected Silver (450-10000nm) |      |        |      |
| <a href="#">#49-413</a> | Enhanced Aluminum (450-650nm)  | 15mm | 21.2mm | 15mm |
| <a href="#">#65-848</a> | Protected Gold (700-10000nm)   |      |        |      |
| <a href="#">#21-187</a> | Protected Silver (450-10000nm) |      |        |      |
| <a href="#">#49-414</a> | Enhanced Aluminum (450-650nm)  | 20mm | 28.3mm | 20mm |
| <a href="#">#65-849</a> | Protected Gold (700-10000nm)   |      |        |      |
| <a href="#">#21-188</a> | Protected Silver (450-10000nm) |      |        |      |
| <a href="#">#47-005</a> | Enhanced Aluminum (450-650nm)  | 25mm | 35.4mm | 25mm |
| <a href="#">#47-238</a> | Protected Gold (700-10000nm)   |      |        |      |

|   |                                |      |         |      |
|---|--------------------------------|------|---------|------|
| #21-189   | Protected Silver (450-10000nm) |      |         |      |
| #47-006   | Enhanced Aluminum (450-650nm)  | 50mm | 70.7mm  | 50mm |
| #47-239   | Protected Gold (700-10000nm)   |      |         |      |
| #21-190   | Protected Silver (450-10000nm) |      |         |      |
| #47-309   | Enhanced Aluminum (450-650nm)  | 75mm | 106.1mm | 75mm |
| #47-310   | Protected Gold (700-10000nm)   |      |         |      |
| #21-191   | Protected Silver (450-10000nm) |      |         |      |
|  |                                |      |         |      |

## Coating Curves

Enhanced Aluminum (450-650nm)



Please note that coating performance outside each product's specified design range is theoretical and may vary.

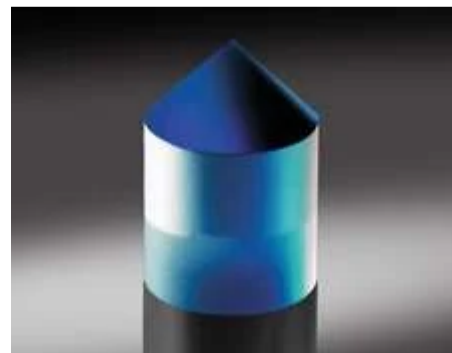
## Related Products



Right Angle Prisms



Knife-Edge Pickoff Mirrors



Cone Mirrors



Benchtop Optical Mounts

## Resources

**Media Type**

- Application Note
- Video
- FAQ
- Glossary

**CASE STUDIES**  
**Laser Optics for Eye Surgery**

**TRENDING IN OPTICS**  
**Increasing Challenges for Sourcing Laser Optics...**

**CASE STUDIES**  
**Using IR Spectroscopy for Counterfeit Drug Detection**

**APPLICATION NOTE**  
**Metallic Mirror Coatings**

**VIDEO**  
**Optical Mirrors Review**

**? FAQ**  
**What is the difference between a first-surface...**

[View More](#)