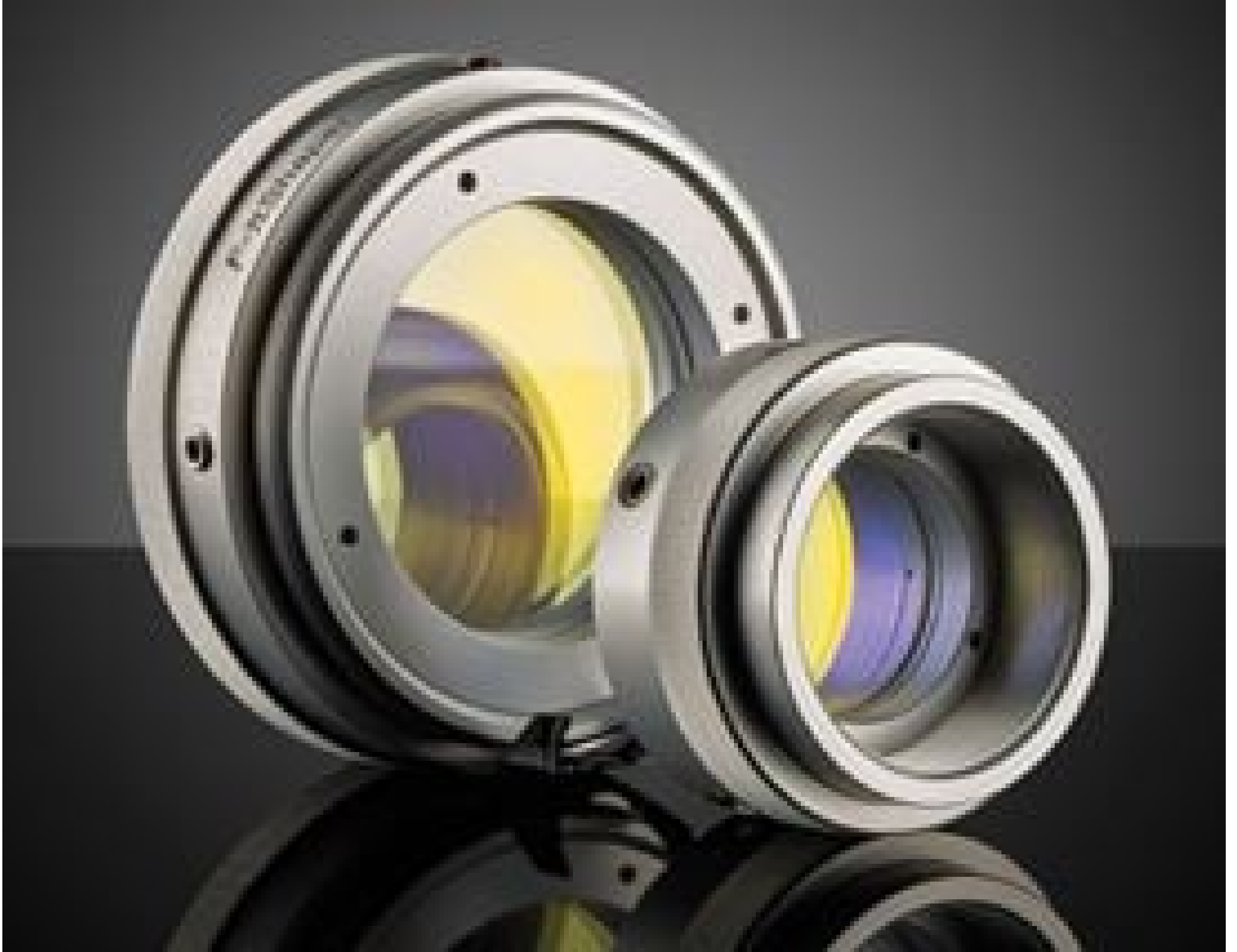


[See all 32 Products in Family](#)

355 & 532nm, 8-12mm Dia. Input Beam, Focal Flat Top Beam Shaper | Focal π Shaper_NUV_Q 10

See More by [AdiOptica](#)



Stock **#12-240** [CONTACT US](#)

⊖ 1 ⊕ £2,790⁰⁰

ADD TO CART

Volume Pricing

Qty 1-4	£2,790.00 each
Qty 5-10	£2,510.00 each
Qty 11+	£2,373.00 each
Need More?	Request Quote

! Prices shown are exclusive of VAT/local taxes

Product Downloads

General

π Shaper_NUV_Q10 **Model Number:**

Beam Shaper	Type:
#12-322	Compatible Adapter:
Physical & Mechanical Properties	
29.00	Length (mm):
50	Weight (g):
20	Clear Aperture CA (mm):
42.00	Diameter (mm):
8 - 12	Input Beam Diameter, 1/e ² (mm):
Optical Properties	
>99	Transmission (%):
355, 532	Design Wavelength DWL (nm):
335 - 560	Wavelength Range (nm):
TEM ₀	Input Beam Mode:
<1.5	Typical Input Beam Mode Quality, M ² :
±20	Input Beam Divergence (mrad):
Electrical	
0.2	Maximum Input Power, CW (kW):
Threading & Mounting	
M30 x 0.75	Inner Thread:
M30 x 0.75	Outer Thread:
Regulatory Compliance	
Compliant	RoHS 2015:
View	Certificate of Conformance:
Compliant	Reach 250:

Product Details

- Shapes Gaussian Beams to Airy Disk Profile
- Airy Disk is Focusable to Flat Top Spot
- Near 100% Efficiency
- [AdlOptica piShaper Flat Top Beam Shapers](#) Also Available

AdlOptica Focal-piShaper (piShaper) Q Flat Top Beam Shapers are used to transform Gaussian beams to flat-top profiles after focusing through a lens. This is accomplished by transforming the Gaussian beam to airy disk profiles immediately after the piShaper. These beam shapers feature a compact design with inner and outer threading, making them easy to integrate into equipment. AdlOptica Focal-piShapers are advantageous for beam shaping in micromachining applications, including scribing and PCB drilling, as well as micro-welding applications. Multiple models are available at Nd:YAG, Ti:Sapphire, and Infrared wavelengths with compatible input beam diameters as small as 2.5mm and up to 23mm.

Technical Information

