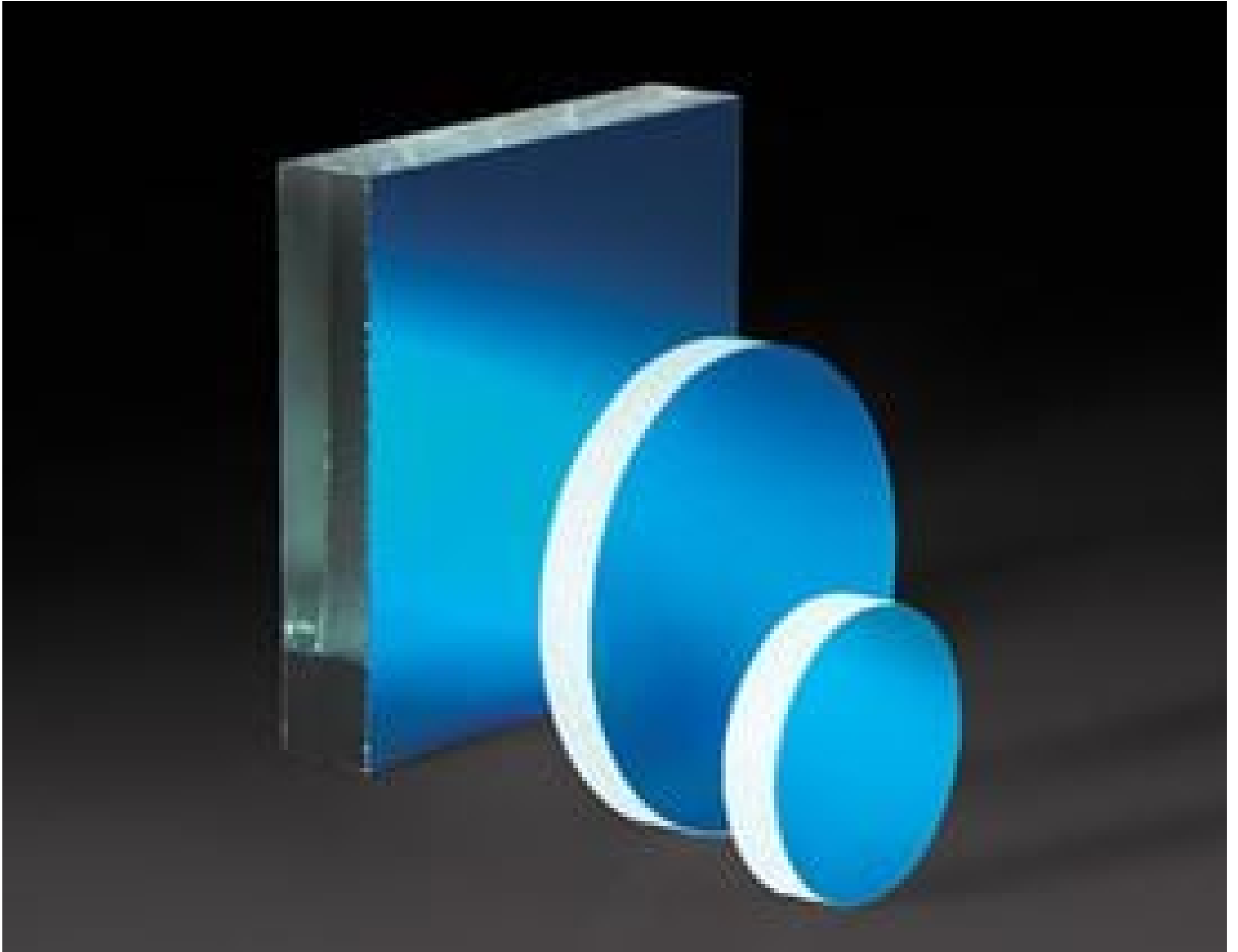


[See all 11 Products in Family](#)

## 32 x 32mm Laser Diode Mirror



Stock **#31-495** **20+ In Stock**

− 1 + £25<sup>00</sup>

**ADD TO CART**

### Volume Pricing

Qty 1-10	£25.60 each
Qty 11-24	£20.00 each
Need More?	<a href="#">Request Quote</a>

**i** Prices shown are exclusive of VAT/local taxes

### Product Downloads

#### General

Flat Mirror **Type:**

#### Physical & Mechanical Properties

6.35 **Thickness (mm):**

32.0 x 32.0 **Dimensions (mm):**

±0.25 **Dimensional Tolerance (mm):**

32.00 **Length (mm):**

32.00 **Width (mm):**

### Optical Properties

Dielectric **Coating Type:**

Dielectric Mirror (500-700nm) **Coating:**

633 **Design Wavelength DWL (nm):**

Float Glass **Substrate:**

R<sub>abs</sub> >97% @ 633nm **Coating Specification:**

80-50 **Surface Quality:**

### Environmental & Durability Factors

ML-C-48497A **Durability:**

### Regulatory Compliance

[Compliant](#) **RoHS 2015:**

[View](#) **Certificate of Conformance:**

[Compliant](#) **Reach 247:**

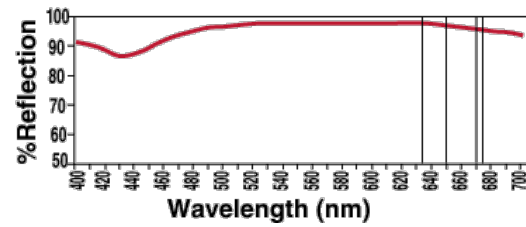
## Product Details

- Over 95% Reflectance of Visible Laser Diode Light
- Ideal for Multiple Reflection Systems
- Coating Optimized for 633nm at 45° AOI

Visible Laser Diode Mirrors are specially coated to attain maximum reflection of visible laser diodes. Optimized for 633nm at a 45° angle of incidence, these mirrors provide 97% reflectance versus only 85 - 90% for standard first surface mirrors. This reduced loss is particularly important in multiple reflection systems, where loss can significantly impact system efficiency. Visible Laser Diode Mirrors feature a float glass substrate and are ideal for multiple reflection systems.

## Technical Information

### Visible Laser Diode Mirror Reflectance at 45°



@ 500nm	95.0%
@ 550nm	97.0%
@ 600nm	97.5%
@ 633nm	97.0%
@ 635nm	97.0%
@ 650nm	96.5%
@ 670nm	96.0%
@ 675nm	95.0%
@ 700nm	94.5%

**Quote Your Size**

## Compatible Mounts

---