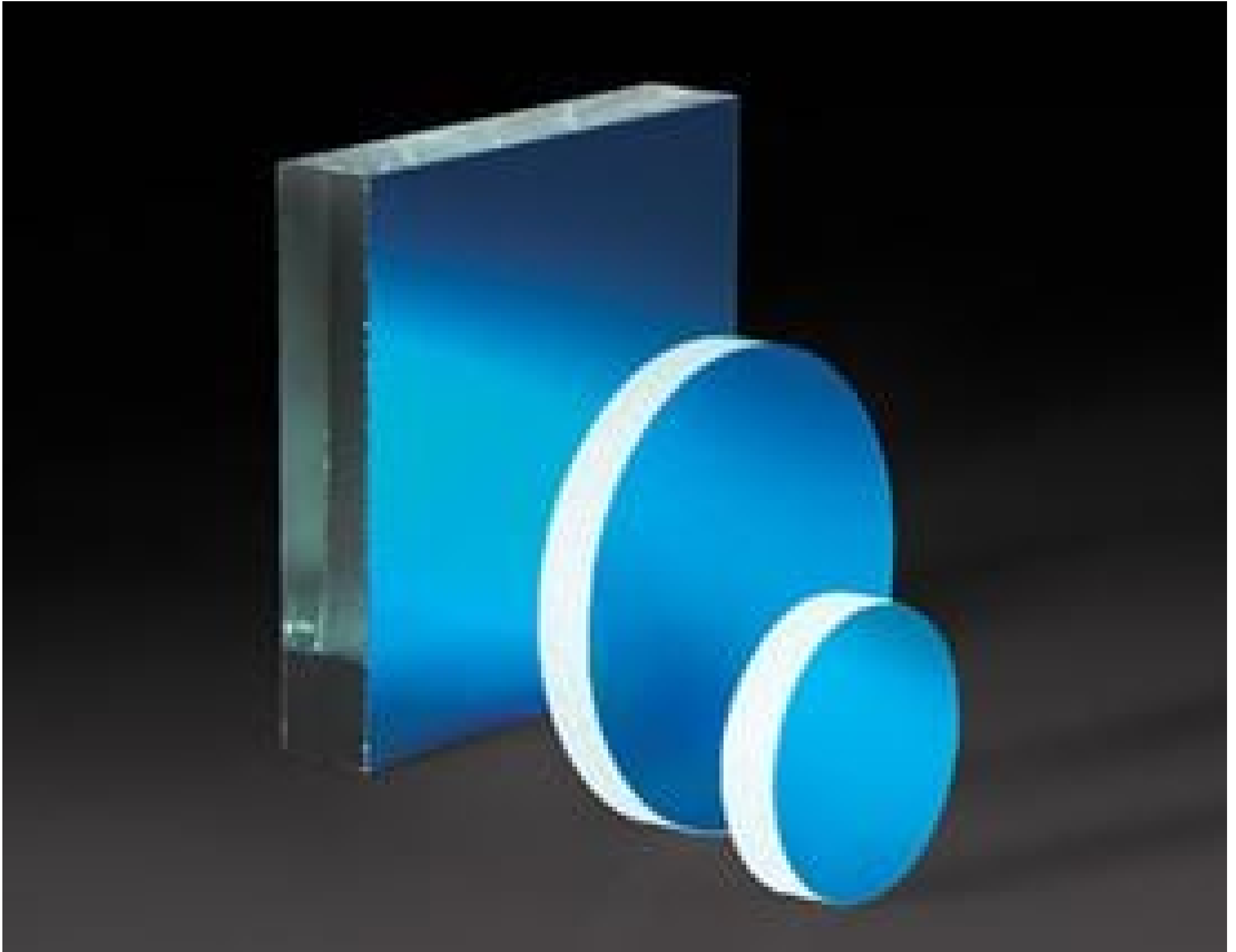


32 x 32mm Laser Diode Mirror



Stock #31-495 **20+ In Stock**

⊖ 1 ⊕ £25⁰⁰

ADD TO CART

Volume Pricing	
Qty 1-10	£25.60 each
Qty 11-24	£20.00 each
Need More?	Request Quote

ⓘ Prices shown are exclusive of VAT/local taxes

Product Downloads

General

Flat Mirror **Type:**

Physical & Mechanical Properties

6.35 **Thickness (mm):**

32.0 x 32.0 **Dimensions (mm):**

Dimensional Tolerance (mm):	±0.25
Length (mm):	32.00
Width (mm):	32.00

Optical Properties

Coating Type:	Dielectric
Coating:	Dielectric Mirror (500-700nm)
Design Wavelength DWL (nm):	633
Substrate:	Float Glass
Coating Specification:	R _{abs} >97% @633nm
Surface Quality:	80-50

Environmental & Durability Factors

Durability:	ML-C-48497A
--------------------	-------------

Regulatory Compliance

RoHS 2015:	Compliant
Certificate of Conformance:	View
Reach 247:	Compliant

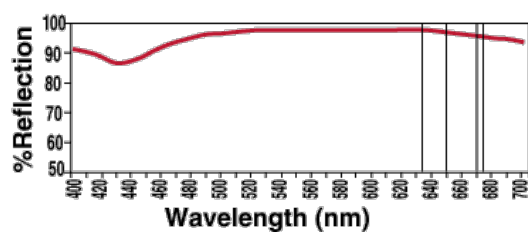
Product Details

- Over 95% Reflectance of Visible Laser Diode Light
- Ideal for Multiple Reflection Systems
- Coating Optimized for 633nm at 45° AOI

Visible Laser Diode Mirrors are specially coated to attain maximum reflection of visible laser diodes. Optimized for 633nm at a 45° angle of incidence, these mirrors provide 97% reflectance versus only 85 - 90% for standard first surface mirrors. This reduced loss is particularly important in multiple reflection systems, where loss can significantly impact system efficiency. Visible Laser Diode Mirrors feature a float glass substrate and are ideal for multiple reflection systems.

Technical Information

Visible Laser Diode Mirror Reflectance at 45°



@ 500nm	95.0%
@ 550nm	97.0%
@ 600nm	97.5%
@ 633nm	97.0%
@ 635nm	97.0%
@ 650nm	96.5%
@ 670nm	96.0%
@ 675nm	95.0%
@ 700nm	94.5%

Quote Your Size

Compatible Mounts
