

TECHSPEC® 25.4mm Dia. $\lambda/10$ Fused Silica Optical Flat



Stock #01-913-000 **20+ In Stock**

1 **£112⁰⁰**

ADD TO CART



Volume Pricing	
Qty 1-10	£112.00 each
Qty 11-25	£99.20 each
Qty 26-49	£93.60 each
Need More?	Request Quote

Prices shown are exclusive of VAT/local taxes

Product Downloads	
STEP:step	PDF Drawing:pdf
IGES:igs	eDrawing:eprt
EO Spec Sheet	

General

Type: Interferometry Window

Physical & Mechanical Properties

Clear Aperture CA (mm): 22.90	Diameter (inches): 1.00 +0.00/-0.04
Diameter (mm): 25.40 +0.00/-1.00	Thickness (inches): 0.50 ±0.06
Thickness (mm): 12.70 ±1.5	Parallelism (arcmin): ≤3
Bevel: Protective as needed	Construction: Single Surface
Edges: Fine Ground	Poisson's Ratio: 0.16
Young's Modulus (GPa): 73	Knoop Hardness (kg/mm²): 522.00

Optical Properties

Coating: Uncoated	Color: Clear
Substrate: Fused Silica	Index of Refraction (n_d): 1.458
Surface Quality: 60-40	Abbe Number (v_d): 67.8
Surface Flatness (P-V): $\lambda/10$	

Material Properties

Density (g/cm³): 2.20

Coefficient of Thermal Expansion CTE (10⁻⁶/°C): 0.52 (+5 to +35°C)
0.57 (0 to +200°C)
0.48 (-100 to +200°C)

Regulatory Compliance

RoHS 2015: **Compliant**

Reach 211: **Compliant**

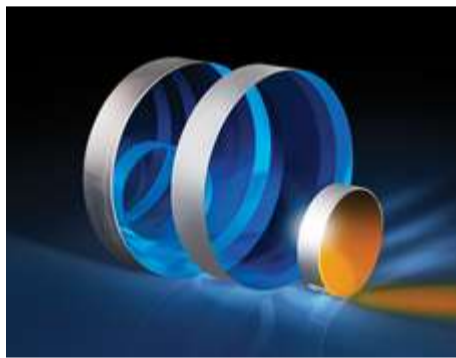
Certificate of Conformance: **View**

Product Details

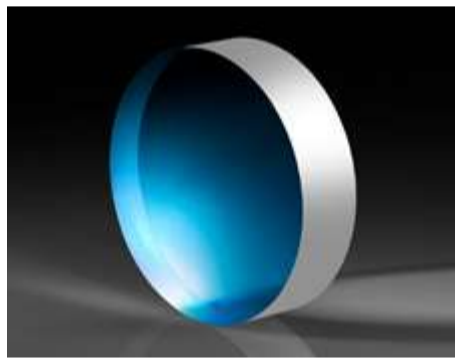
- Sizes Ranging from ½" Diameter to 14" Diameter
- Each λ/20 Flat 76.2mm and Larger Includes a Certificate of Calibration
- Available with Standard Metallic Mirror Coatings: [λ/10](#) and [λ/20 Mirrors](#)

TECHSPEC® Single Surface Optical Flats are used as a reference (test plate) against which the flatness of an unknown surface may be compared. Each piece is precision polished by our master opticians and tested on a Zygo interferometer to insure the surface flatness. The secondary surfaces of our single surface flats are pitch polished to window quality for viewing the interference pattern. TECHSPEC Single Surface Optical Flats ship in a durable storage case for permanent protection. λ/20 flats that are 76.2mm or larger also include a certificate of calibration.

Related Products



Precision Optical Flat Mirrors



Precision Dual Surface Optical Flats

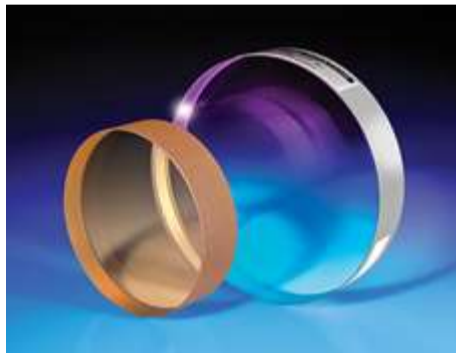


Optical Lens and Filter Mounts



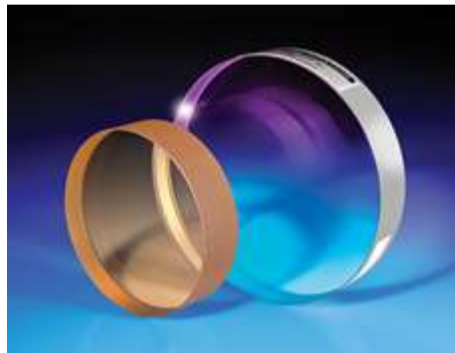
Optical Cell Kinematic Mounts

Frequently Purchased Together



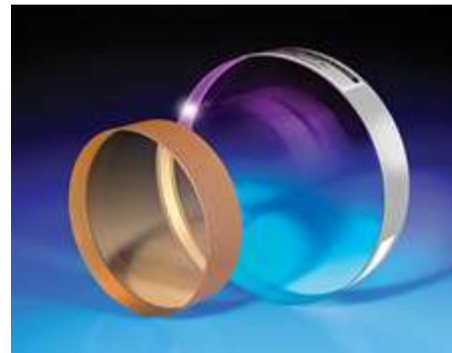
#01-914-000 - 50.8mm Dia. λ/10 Fused Silica Optical Flat
£188.00

Qty



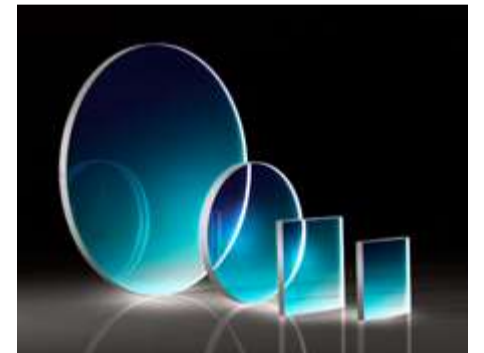
#01-611-000 - 101.6mm Dia. λ/10 Fused Silica Optical Flat
£736.00

Qty



#01-915-000 - 76.2mm Dia. λ/10 Fused Silica Optical Flat
£420.00

Qty



#02-105 - 12.5mm Diameter Float Glass Window
£12.00

Qty



Resources

Media Type

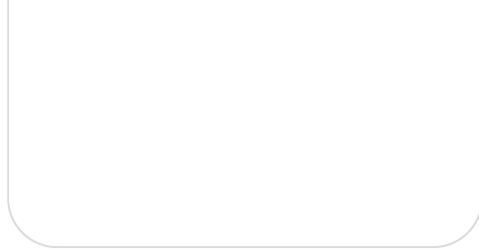
APPLICATION NOTE

Anti-Reflection (AR) Coatings

APPLICATION NOTE

TECHNICAL TOOL

- Application Note
- Technical Tool
- Video
- Glossary
- FAQ



An Introduction to Optical Coatings

Beam Displacement Calculator

APPLICATION NOTE
Understanding Optical Windows

VIDEO
Optical Windows Review

APPLICATION NOTE
Optical Glass

[View More](#)