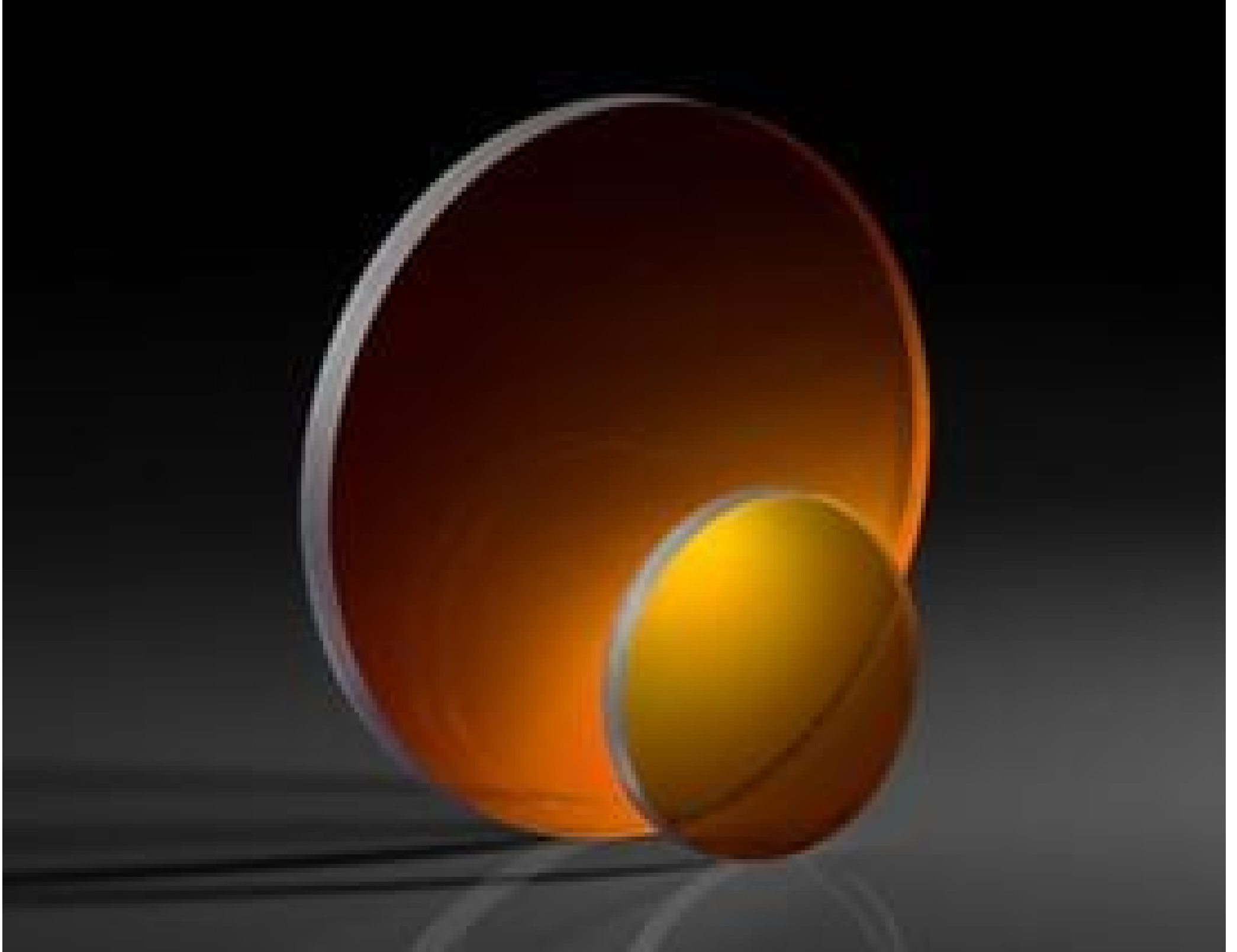


[See all 1 Products in Family](#)

25.4mm Dia., 3mm Thick, Uncoated, ISP Optics Potassium Bromide (KBr) Window | KB-W-25-3

See More by [ISP Optics](#)



Stock #24-610 **CLEARANCE** 4 In Stock

− 1 + £92.⁰⁰

ADD TO CART

Volume Pricing	
Qty 1+	£92.00 each
Need More?	Request Quote

Prices shown are exclusive of VAT/local taxes

Product Downloads

General

KB-W-25-3 **Model Number:**

Protective Window **Type:**

Type of Window:

Physical & Mechanical Properties

21.59 **Clear Aperture CA (mm):**

25.40 +0.00/-0.13 **Diameter (mm):**

3.00 ±0.13 **Thickness (mm):**

<3 **Parallelism (arcmin):**

Protective as needed **Bevel:**

85 **Clear Aperture (%):**

Fine Ground **Edges:**

0.20 **Poisson's Ratio:**

26.8 **Young's Modulus (GPa):**

7.00 **Knoop Hardness (kg/mm²):**

Optical Properties

Uncoated **Coating:**

Potassium Bromide (KBr) **Substrate:**

1.56 **Index of Refraction (n_d):**

60-40 **Surface Quality:**

33.64 **Abbe Number (v_d):**

250 - 26000 **Wavelength Range (nm):**

M10 @ 10.6μ **Surface Flatness (P-V):**

Material Properties

2.753 **Density (g/cm³):**

43 **Coefficient of Thermal Expansion CTE (10⁻⁶/°C):**

53.48 **Solubility, in 100g of H₂O @ 273K (g):**

Regulatory Compliance

Compliant **RoHS 2015:**

View **Certificate of Conformance:**

Compliant **Reach 240:**

Product Details

- Excellent Transmission from 0.25 – 26μm
- Good Resistance to Mechanical Shock
- Ideal for FTIR Spectroscopy

ISP Optics Potassium Bromide (KBr) Windows feature excellent transmission across a broad wavelength range from the Deep UV (DUV) to the Long-Wave Infrared (LWIR). These windows are highly resistant to mechanical shock, can be easily cleaved, and can be used in temperatures up to 300°C. Potassium Bromide is water soluble and it should be protected from exposure to moisture and high humidity as it will degrade the surface of the window. ISP Optics Potassium Bromide (KBr) Windows can be used for a wide range of applications in the UV, Visible, MMR, and LWIR spectra, but is particularly useful for Fourier Transform Infrared (FTIR) spectroscopy.

Note: Potassium Bromide (KBr) is water soluble and must be protected from humid or wet environments.

Special Handling

These optics require special handling to avoid damage and ensure long-term performance. Proper handling, cleaning, and storage are essential to maintain optical quality. Explore our [Optics Cleaning Resources](#) for step-by-step guides and best practices. For personalized assistance, [Email us](#) or [Chat](#) with our technical support team.



Component Handling Tools

;