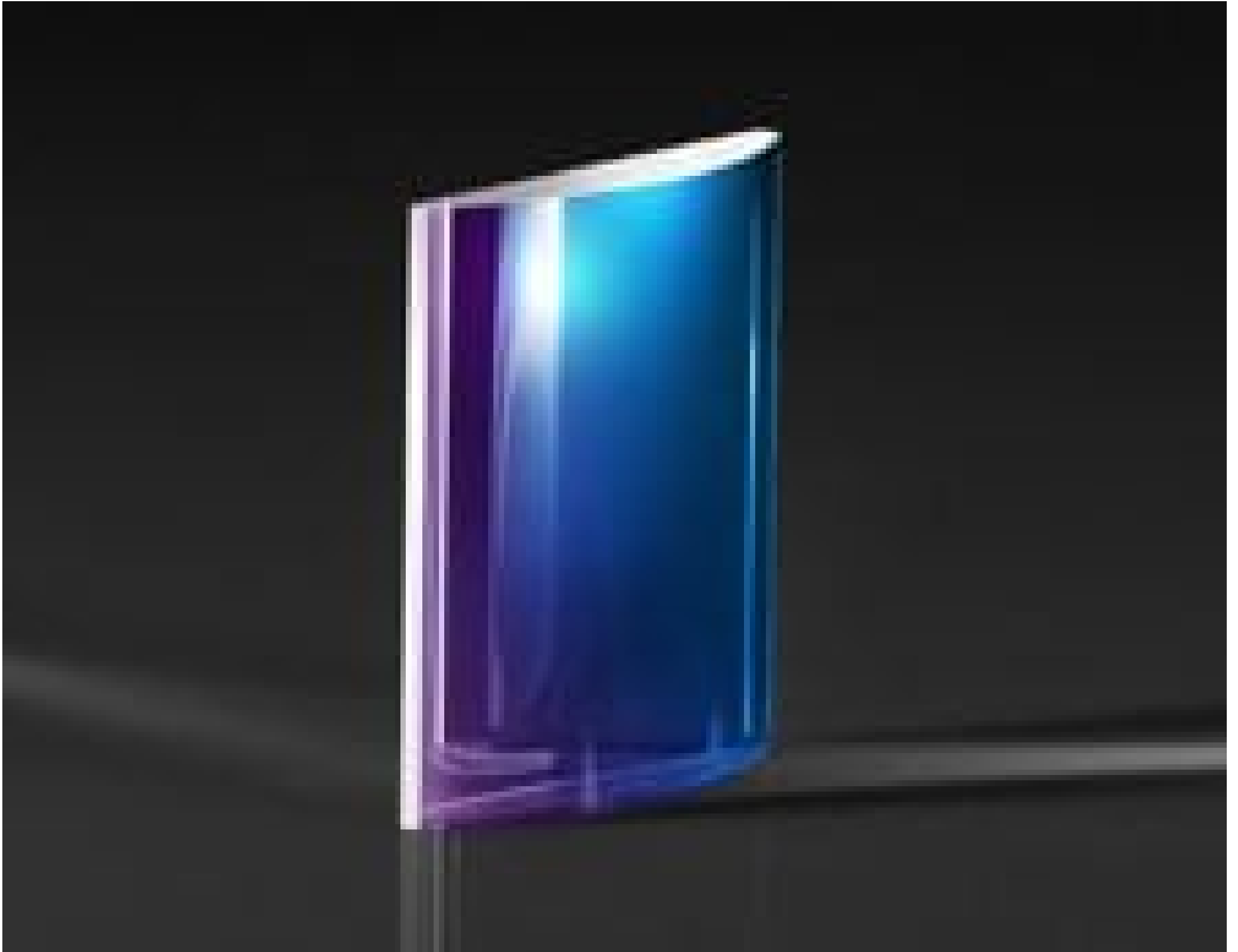


TECHSPEC® 25.4 x 25.4mm x 50mm FL, VIS 0° Imaging Grade PCX Cylinder Lens



Stock #34-988 **15 In Stock**

- 1 + £100.⁰⁰

ADD TO CART

Volume Pricing	
Qty 1-5	£100.00 each
Qty 6-25	£90.00 each
Qty 26-49	£86.00 each
Need More?	Request Quote

! Prices shown are exclusive of VAT/local taxes

Product Downloads

General

Cylinder Lens, Plano-Convex **Type:**

Physical & Mechanical Properties

Protective as needed **Bevel:**

4.34 **Center Thickness CT (mm):**

±0.1	Center Thickness Tolerance (mm):
22.86 x 22.86	Clear Aperture CA (mm):
+0.0/-0.025	Dimensional Tolerance (mm):
25.4 x 25.4	Dimensions (mm):
1.00	Edge Thickness ET (mm):
<3	Axial Twist (arcmin):

Optical Properties

50.00	Effective Focal Length EFL (mm):
N-BK7	Substrate: <input type="checkbox"/>
2.00	f#:
0.25	Numerical Aperture NA:
VIS 0° (425-675nm)	Coating:
425 - 675	Wavelength Range (nm):
47.14	Back Focal Length BFL (mm):
R _{avg} ≤ 0.4% @ 425 - 675nm	Coating Specification:
±1	Focal Length Tolerance (%):
25.84	Radius R₁ (mm):
40-20	Surface Quality:
1.5λ	Power (P-V) @ 632.8nm:
M4	Irregularity (P-V) @ 632.8nm:
<5	Plano Axis Wedge (arcmin):
<5	Power Axis Wedge (arcmin):

Regulatory Compliance

Compliant	RoHS 2015:
View	Certificate of Conformance:
Compliant	Reach 235:

Need different specs or modifications?

Edmund Optics offers comprehensive custom manufacturing services for optical and imaging components tailored to your specific application requirements. Whether in the prototyping phase or preparing for full-scale production, we provide flexible solutions to meet your needs. Our experienced engineers are here to assist—from concept to completion.

Our capabilities include:

- Custom dimensions, materials, coatings, and more
- High-precision surface quality and flatness
- Tight tolerances and complex geometries
- Scalable production—from prototype to volume

Learn more about our [custom manufacturing capabilities](#) or submit an inquiry [here](#).

Product Details

- Ideal for Beam Shaping Applications
- Tightly Controlled Optical and Geometric Tolerances
- Rectangular and Circular Form Factors Available

TECHSPEC® Imaging Grade PCX Cylinder Lenses offer an ideal pairing of tightly controlled tolerances and scalable pricing for volume integration. As opposed to spherical lenses, which focus light in two dimensions, cylinder lenses are used to focus light in one dimension. AR Coating options are available for laser applications, minimizing stray light and maximizing throughput of a system. Our TECHSPEC Imaging Grade PCX Cylinder Lenses are specified to control geometric characteristics in order to ensure consistent performance from design to manufacturing. Typical applications include circularizing elliptical beams from a laser diode, creating a light sheet for measurement systems, or projecting a laser line onto a surface.

Note: For negative focal length cylinder lenses, see our [TECHSPEC Imaging Grade PCV Cylinder Lenses](#).



Coating Curves
