

[See all 7 Products in Family](#)

2.15" White, Strobed, LED Darkfield Illuminator

See More by [Advanced Illumination](#)



Stock #83-252 [CONTACT US](#)

- 1 + £400⁰⁰

ADD TO CART

Volume Pricing	
Qty 1+	£400.00 each
Need More?	Request Quote

! Prices shown are exclusive of VAT/local taxes

Note: This item requires accessories for use | [Learn More](#)

Product Downloads

SPECIFICATIONS

General

RL2115-WHII3 **Model Number:**

50,000 **LED Lifetime (hours):**

15.00	Number of LEDs:
1.00	Number of Channels:
LED Illuminator	Type of Illumination:
Optional Manual Intensity Adjustment #86-887 and #89-555 are Available	Note:
Advanced Illumination	Manufacturer:
Ring Light	Geometry:
Strobed	Illumination Mode:
Physical & Mechanical Properties	
55.0	Height (mm):
19.0	Inner Diameter (mm):
55.0	Outer Diameter (mm):
6.4 - 12.7	Field Coverage (mm):
Optical Properties	
White	Color:
19 - 25.4	Working Distance (mm):
Electrical	
30.00	Maximum Trigger Frequency (Hz):
30 - 300	Strobe Duration (µs):
Hardware & Interface Connectivity	
Flying Leads	Connector:
Power Supply Required and Sold Separately. USA: #66-855 Europe: #66-855 Japan: #89-513 Korea: #33-773 China: #66-855	Power Supply:
Threading & Mounting	
Standard	Mount:
M3 x2	Mounting Threads:
Environmental & Durability Factors	
0 to +65	Operating Temperature (°C):
Regulatory Compliance	
Compliant	RoHS 2015:
View	Certificate of Conformance:
Contains SVHC(s)	Reach 233:

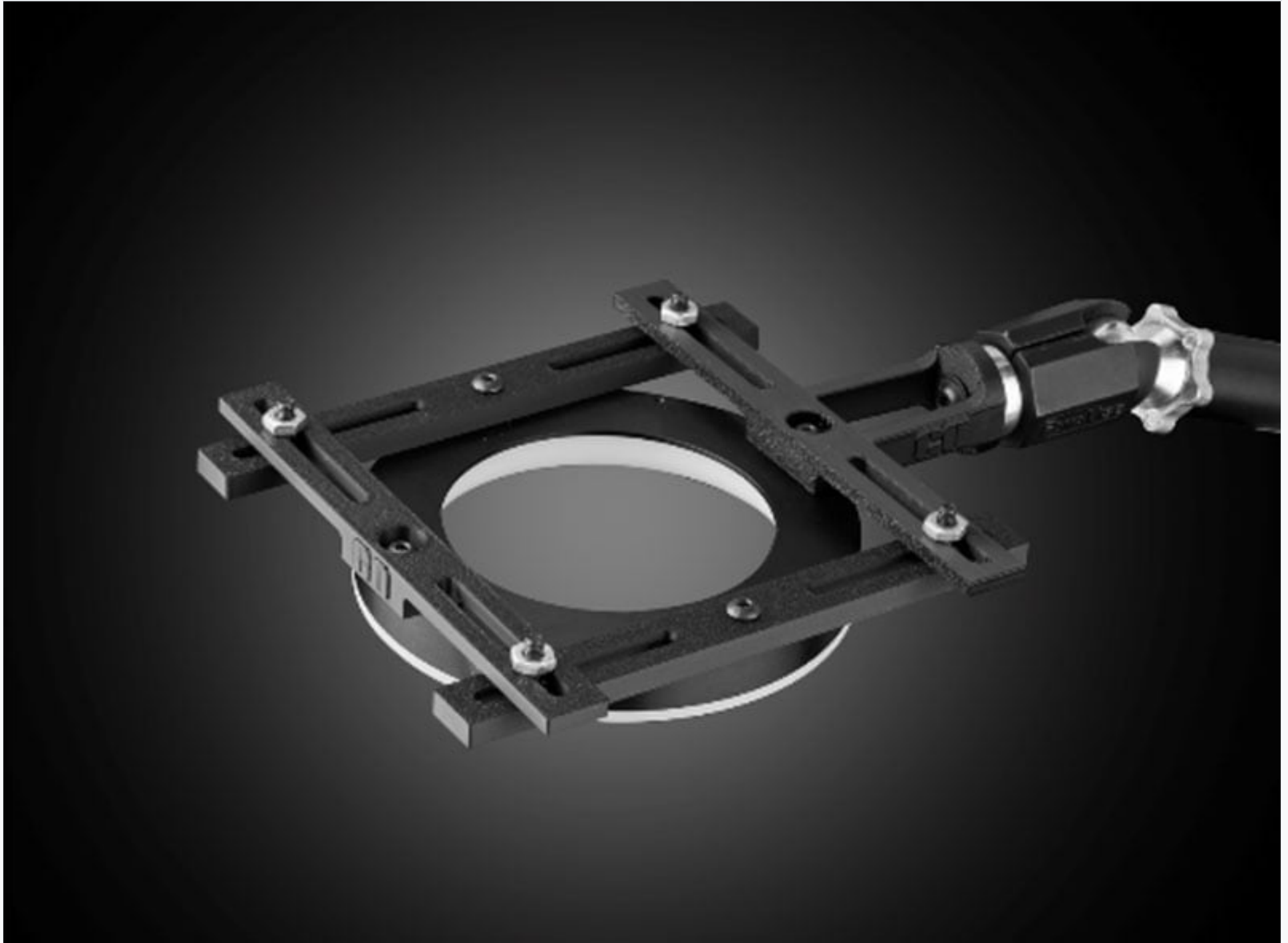
PRODUCT DETAILS

- Ideal for Visually Enhancing Surface Defects
- Useful for Front or Back Illumination
- 5" Versions Have Variable Intensity

Advanced Illumination Darkfield LED Illuminators are ideal for visually enhancing surface defects. LED intensity can be varied through the in line potentiometer. The 5" darkfield illuminator includes a mounting bracket for easy system integration.

Note: Required 24V power supply [#66-855](#). [Accessories for Advanced Illumination products](#) are available and sold separately.

The strobed models' flash duration is dependent on a trigger signal or potentiometer setting. The duration of the strobe can be adjusted from 30 - 300µs via a knob located in the back of the unit. Trigger input signal is CMOS/TTL compatible. The maximum trigger frequency is 30Hz.



Ring Light Configuration

**DOWNLOAD
NOW**

Designed for use with the [Articulating Arm Mounting Systems](#), these 3D-printed mounts allow easy positioning of lights in brightfield or darkfield setups. The design is based on mounting illumination to 1/4-20" breadboards or into 80/20 extrusion systems, but can be adapted based on user needs. Mounts are available for ring, bar, line, and inline spot lights.



Application Note

Illumination Mounts for Machine Vision Applications

[Read](#) 



Video

Assembly of 3D Printed Mounts for Common Illumination Geometries

[Watch](#) 