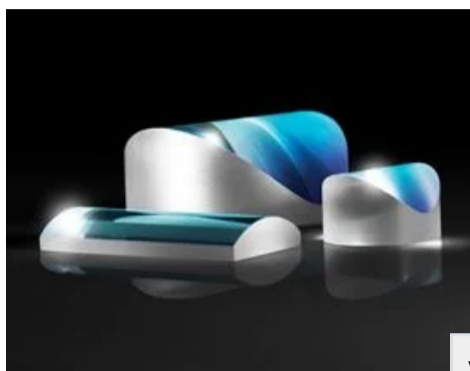


[« See all 227 Products in Family](#)
[All Products](#) / [Optics](#) / [Optical Lenses](#) / [Cylinder Lenses](#) / [Illumination Grade Cylinder Lenses](#) / [Illumination Grade PCX Cylinder Lenses](#)
**TECHSPEC®**

# 20mm H x 20mm L x 50mm FL Uncoated, Illumination Grade PCX Cylinder Lens


 Stock #25-495 **5 In Stock**

 - 1 + £86.<sup>00</sup>
[ADD TO CART](#)

Volume Pricing	
Qty 1-5	£86.00 each
Qty 6-25	£77.00 each
Qty 26-49	£74.00 each
Need More?	<a href="#">Request Quote</a>

ⓘ Prices shown are exclusive of VAT/local taxes

Product Downloads	
STEP:step	PDF Drawing:pdf
IGES:igs	eDrawing:eprt
EO Spec Sheet	<a href="#">Download All</a>

## General

**Type:** Cylinder Lens, Plano-Convex

## Physical & Mechanical Properties

<b>Center Thickness CT (mm):</b>	6.00	<b>Center Thickness Tolerance (mm):</b>	±0.1
<b>Dimensional Tolerance (mm):</b>	+0.0/-0.2	<b>Dimensions (mm):</b>	20.0 x 20.0
<b>Edge Thickness ET (mm):</b>	3.99	<b>Tilt Tolerance (mm):</b>	±0.1 over H
<b>Wedge Tolerance (arcmin):</b>	15.00		

## Optical Properties

<b>Effective Focal Length EFL (mm):</b>	50.00	<b>Substrate:</b> ⓘ <b>N-BK7</b>	
<b>f/#:</b>	2.5	<b>Numerical Aperture NA:</b>	0.20
<b>Coating:</b>	Uncoated	<b>Wavelength Range (nm):</b>	350 - 2200
<b>Back Focal Length BFL (mm):</b>	46.04	<b>Focal Length Tolerance (%):</b>	±3

Radius R<sub>1</sub> 25.84  
(mm):

Surface 60-40  
Quality:

## Regulatory Compliance

Certificate of Conformance: [View](#)

## Need different specs or modifications?

Edmund Optics offers comprehensive custom manufacturing services for optical and imaging components tailored to your specific application requirements. Whether in the prototyping phase or preparing for full-scale production, we provide flexible solutions to meet your needs. Our experienced engineers are here to assist—from concept to completion.

Our capabilities include:

- Custom dimensions, materials, coatings, and more
- High-precision surface quality and flatness
- Tight tolerances and complex geometries
- Scalable production—from prototype to volume

Learn more about our [custom manufacturing capabilities](#) or submit an inquiry [here](#).

## Product Details

- N-BK7 Substrate for Broadband Performance
- Cost-Effective for OEM Integration
- Multiple Coating Options Available

TECHSPEC® Illumination Grade PCX Cylinder Lenses are similar to Plano-Convex (PCX) lenses in profile, but include a portion of a cylinder instead of a sphere. These lenses focus light in one dimension and can transform a point of light into a line. TECHSPEC® Illumination Grade PCX Cylinder Lenses are available in circular and rectangular versions, along with multiple coating options. Cylinder lenses are ideal for line projection in machine vision applications or guidance systems.

**Note:** For negative focal length cylinder lenses, see our [TECHSPEC® Illumination Grade PCV Cylinder Lenses](#).

**LASER OPTICS** MADE BY EDMUND OPTICS®

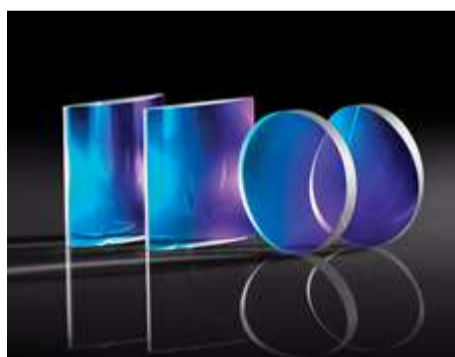
[LEARN MORE](#)

## Technical Information

## Related Products



Illumination Grade PCV  
Cylinder Lenses



Imaging Grade PCX  
Cylinder Lenses



Laser Grade Laser Line  
Cylinder Lenses



Laser Grade Broadband  
Cylinder Lenses

## Frequently Purchased Together



#68-033 - 12.5mm H x 25mm L x 50mm FL Uncoated, Illumination Grade PCX Cylinder Lens  
**£57.00**

Qty



#69-843 - 25mm Dia x -50mm FL VIS-NIR Coated, Illumination Grade PCV Cylinder Lens  
**£83.00**

Qty



#25-489 - 20mm H x 20mm L x 25mm FL Uncoated, Illumination Grade PCX Cylinder Lens  
**£86.00**

Qty

# Resources

## Media Type

- Application Note
- Trending in Optics
- Published Article
- FAQ
- Glossary
- Video

**APPLICATION NOTE**

**Anti-Reflection (AR) Coatings**

**APPLICATION NOTE**

**Laser Beam Shaping Overview**

**TRENDING IN OPTICS**

**Non-Circular Optics for System Miniaturization**

**APPLICATION NOTE**

**What are Cylinder Lenses?**

**APPLICATION NOTE**

**Considerations When Using Cylinder Lenses**

**PUBLISHED ARTICLE**

**Cylinder Lenses for Beam Shaping**

[View More](#)