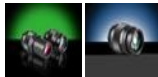


# 1X Mitutoyo Telecentric Objective

See More by [Mitutoyo](#)



3X (#56-985) & 5X (#56-986)



Stock **#56-984** **2 In Stock**

⊖ 1 ⊕ £2,160<sup>00</sup>

**ADD TO CART**

Volume Pricing	
Qty 1+	£2,160.00 each
Need More?	<a href="#">Request Quote</a>

ⓘ Prices shown are exclusive of VAT/local taxes

## Product Downloads

### General

375-036-2 **Model Number:**

Microscope Objective **Type:**

Finite Conjugate **Style:**

Mtutoyo **Manufacturer:**

**Note:**  
Image is formed 280mm from specimen (170mm from the mounting flange)

## Physical & Mechanical Properties

49.00 **Length (mm):**

49.00 **Length excluding Threads (mm):**

30 **Maximum Diameter (mm):**

80 **Weight (g):**

## Optical Properties

6.40mm **Horizontal Field of View, 1/2" Sensor:**

8.80mm **Horizontal Field of View, 2/3" Sensor:**

175.08 **Focal Length FL (mm):**

NA0.03 **Aperture (f/#):**

1X **Magnification:**

0.03 **Numerical Aperture NA:**

9.2 **Resolving Power ( $\mu\text{m}$ ):**

306.00 **Depth of Field ( $\mu\text{m}$ ):**

24 **Field of View, 24 Diameter Field Eyepiece (mm):**

18 **Field of View, 18 Diameter Field Eyepiece (mm):**

61 **Working Distance (mm):**

435 - 655 **Wavelength Range (nm):**

110 **Parfocal Length (mm):**

N/A **Immersion Liquid:**

11.00 **Maximum Image Circle (mm):**

## Sensor

2/3" **Maximum Sensor Format:**

## Threading & Mounting

M26 x36 TPI **Mount:**

M26 x36 TPI **Mounting Threads:**

## Environmental & Durability Factors

+5 to +40 **Operating Temperature ( $^{\circ}\text{C}$ ):**

20 - 80% **Operating Humidity:**

## Regulatory Compliance

[Exempt](#) **RoHS 2015:**

[View](#) **Certificate of Conformance:**

[Contains SVHC\(s\)](#) **REACH 241:**

## Product Details

- Long Working Distances Allow for Integration into Machine Vision Measurement Systems
- Compact Design and Long Parfocal Length Simplifies Mounting
- [Tube](#) Available for Use with C-Mount Cameras
- Aluminum Alloy Housing

Mitutoyo Telecentric Objectives are ideal for high-resolution, high power machine vision measurement and optical gauging systems. With powers up to 100X, these objectives can be used for semiconductor production and inspection, and in metrology, quality assurance, and R&D laboratories. These objectives are constructed of an aluminum alloy housing. Mitutoyo Telecentric Objectives have a compact design and a long parfocal length that simplifies mounting. They are easily integrated into C-Mount imaging systems with our Mitutoyo C-Mount Camera Tube [#56-992](#).

Edmund Optics is the main source for Mitutoyo Objectives. Place your orders now for these in demand quality products.

## Technical Information

Magnification	A	B	C	D	E	Stock No.
1X	49	10	16.5	31.5	31.5	<a href="#">#56-984</a>
3X	33	10	18	25	28	<a href="#">#56-985</a>
5X	49	10	17	25	28	<a href="#">#56-986</a>
10X	59	10	14.5	30	30	<a href="#">#56-987</a>
20X	90	14.5	23	33	39	<a href="#">#87-228</a>
50X	97	14.7	23	33	39	<a href="#">#87-229</a>
100X	104	14.1	23	33	39	<a href="#">#87-230</a>

