

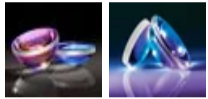
**TECHSPEC®**

# 15mm Dia 0.50 NA, VIS Coated, UV Fused Silica Aspheric Lens


 Stock #49-587 **20+ In Stock** [Other Coating Options](#)

 - 1 + **£439<sup>.20</sup>**
[ADD TO CART](#)

TECHSPEC UV Fused Silica Aspheric Lens



Volume Pricing	
Qty 1-5	£439.20 each
Qty 6-10	£395.20 each
Qty 11-25	£368.80 each
Need More?	<a href="#">Request Quote</a>

Prices shown are exclusive of VAT/local taxes

Product Downloads	
STEP:stp	Curve:pdf
PDF Drawing:pdf	IGES:igs
Zemax:zar	Zemax:zmx
eDrawing:eprt	Code V:seq
EO Spec Sheet	<a href="#">Download All</a>

General			
<b>Type:</b>	Aspheric Lens		
Physical & Mechanical Properties			
<b>Diameter (mm):</b>	15.00 +0.0/-0.1	<b>Centering (arcmin):</b>	≤5
<b>Clear Aperture CA (mm):</b>	13.5	<b>Edge Thickness ET (mm):</b>	2.43
<b>Center Thickness CT (mm):</b>	7.25 ±0.1	<b>Bevel:</b>	Protective as needed
<b>Shape of Back Surface:</b>	Plano		
Optical Properties			
<b>Effective Focal Length EFL (mm):</b>	15.00 @ 587.6nm	<b>Numerical Aperture NA:</b>	0.50
<b>Back Focal Length BFL (mm):</b>	10.029	<b>Substrate:</b>	<b>Fused Silica</b> (Corning 7980)
<b>Aspheric Design Wavelength (nm):</b>	587.6	<b>Asphere Figure Error, RMS @ 632.8nm:</b>	1.2λ
<b>Coating:</b>	VIS (425-675nm)	<b>Coating Specification:</b>	R <sub>avg</sub> ≤1.5% @ 425 - 675nm
<b>Surface Quality:</b>	60-40	<b>f/#:</b>	1.00

<b>Abbe Number (v<sub>d</sub>):</b>	67.8	<b>Index of Refraction (n<sub>d</sub>):</b>	1.458
<b>Wavelength Range (nm):</b>	425 - 675	<b>Conjugate Distance:</b>	Infinite
<b>Focal Length Specification Wavelength (nm):</b>	587.60	<b>Power (diopters):</b>	66.67

## Material Properties

<b>Coefficient of Thermal Expansion CTE (10<sup>-6</sup>/°C):</b>	0.52
-------------------------------------------------------------------	------

## Regulatory Compliance

<b>RoHS 2015:</b> <b>Compliant</b>	<b>Certificate of Conformance:</b> <b>View</b>
<b>Reach 235:</b> <b>Compliant</b>	

## Need different specs or modifications?

Edmund Optics offers comprehensive custom manufacturing services for optical and imaging components tailored to your specific application requirements. Whether in the prototyping phase or preparing for full-scale production, we provide flexible solutions to meet your needs. Our experienced engineers are here to assist—from concept to completion.

Our capabilities include:

- Custom dimensions, materials, coatings, and more
- High-precision surface quality and flatness
- Tight tolerances and complex geometries
- Scalable production—from prototype to volume

Learn more about our [custom manufacturing capabilities](#) or submit an inquiry [here](#).

## Product Details

- Low Coefficient of Thermal Expansion
- Precision and High Precision Options
- High Numerical Apertures to Maximize Throughput

TECHSPEC® UV Fused Silica Aspheric Lenses offer the benefits of an aspheric element combined with the manufacturing precision of state-of-the-art grinding and polishing equipment. These fused silica optics can be easily designed and integrated into complex optical systems with the available prescription data. Featuring low f/#'s, which allow for a larger aperture and thus more light gathering and focusing performance, these fused silica lenses are computer-optimized to eliminate spherical and minimize higher order aberrations. TECHSPEC® UV Fused Silica Aspheric Lenses offer a low coefficient of thermal expansion, making them ideal for applications in metrology, beam-focusing or collimating, and OEM integration. These lenses are available in a variety of coating options and are offered in sizes ranging from 10–50mm.

## Technical Information

*UV FS Transmission Curve*

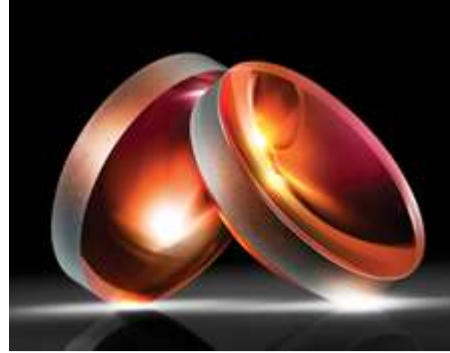
## Related Products



C, S, and T-Mount Circular Optic Mounts



Optic Component Mounts



High Precision Aspheric Lenses



Glass Polished

## Frequently Purchased Together



#54-087 - 2.0mm Diameter x 4.0mm Length, N-BK7 Rod Lens  
**£40.00**

Qty



#62-569 - 25.4mm Dia. x 25.4mm FL, VIS 0° Coated, Plano-Convex Lens  
**£39.80**

Qty



#85-879 - 12.0mm Dia. x -100 FL, Uncoated, UV Plano-Concave Lens  
**£105.60**

Qty

## Compatible Mounts

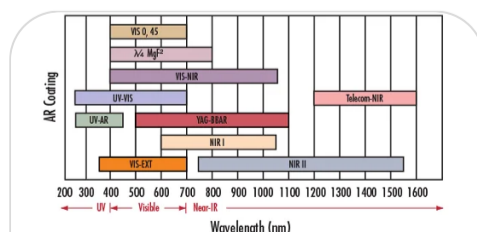
	Title	Type	Compare	Stock Number	Price	Buy
	15.0mm Optic Dia., Optic Mount	Fixed		#64-557	£26.20 <a href="#">Request Quote</a>	10 In Stock <input type="text" value="1"/>
	15mm Inner Single Optic Mount	Fixed		#38-752	£32.80 <a href="#">Request Quote</a>	7 In Stock <input type="text" value="1"/>
	25mm Cage 15mm Diameter Lens Mount	Fixed		#85-546	£36.60 <a href="#">Request Quote</a>	2 In Stock <input type="text" value="1"/>

Check out our full selection of mounts [here](#).

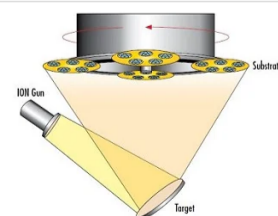
## Resources

### Media Type

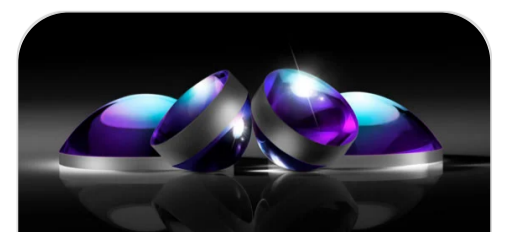
- Application Note
- Scientific Paper
- Trending in Optics
- Video
- Published Article



**APPLICATION NOTE**  
**Anti-Reflection (AR) Coatings**



**APPLICATION NOTE**  
**An Introduction to Optical Coatings**

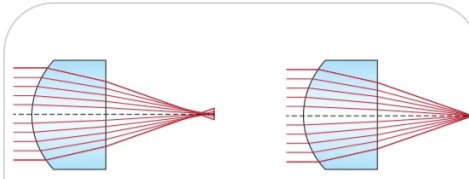


**APPLICATION NOTE**  
**Lens Geometry Performance Comparison**



**CASE STUDIES**

**Laser Optics  
for Eye  
Surgery**



**APPLICATION NOTE**

**All About  
Aspheric  
Lenses**



**WEBINARS**

**Design  
Considerations  
for Custom  
Aspheres**

[View More](#)