

**TECHSPEC® 140mm Dia x 1900.2mm FL Achromatic Lens, Mtd**



Stock **#54-569** **2 In Stock**

⊖ 1 ⊕ £1,224.<sup>00</sup>

**ADD TO CART**

| Volume Pricing |                               |
|----------------|-------------------------------|
| Qty 1-5        | £1,224.00 each                |
| Qty 6-25       | £1,040.00 each                |
| Qty 26-49      | £980.00 each                  |
| Need More?     | <a href="#">Request Quote</a> |

ⓘ Prices shown are exclusive of VAT/local taxes

Product Downloads

**General**

Achromatic Lens **Type:**

**Physical & Mechanical Properties**

140.00 +0.00/-0.12 **Diameter (mm):**

123.00 **Clear Aperture CA (mm):**

|                           |                                    |
|---------------------------|------------------------------------|
| 5.00                      | <b>Centering (arcmin):</b>         |
| 15.42                     | <b>Center Thickness CT 1 (mm):</b> |
| 10.92                     | <b>Center Thickness CT 2 (mm):</b> |
| -2704.01                  | <b>Radius R<sub>4</sub> (mm):</b>  |
| 28.61                     | <b>Edge Thickness ET (mm):</b>     |
| Mounted, Airspaced 0.10mm | <b>Construction:</b>               |
| Protective as needed      | <b>Bevel:</b>                      |

## Optical Properties

|  |  |
|--|--|
| 1,900.24                               | <b>Effective Focal Length EFL (mm):</b>            |
| ±1                                     | <b>Focal Length Tolerance (%):</b>                 |
| 1887.58                                | <b>Back Focal Length BFL (mm):</b>                 |
| 587.6                                  | <b>Focal Length Specification Wavelength (nm):</b> |
| 1,131.72                               | <b>Radius R<sub>1</sub> (mm):</b>                  |
| -780.87                                | <b>Radius R<sub>2</sub> (mm):</b>                  |
| -779.37                                | <b>Radius R<sub>3</sub> (mm):</b>                  |
| <a href="#">N-BK7 / N-SF2</a>          | <b>Substrate:</b> <input type="checkbox"/>         |
| 60-40                                  | <b>Surface Quality:</b>                            |
| 14.8                                   | <b>f#:</b>   |
| 0.03                                   | <b>Numerical Aperture NA:</b>                      |
| MgF <sub>2</sub> (400-700nm)           | <b>Coating:</b>                                    |
| R <sub>avg</sub> ≤ 1.75% @ 400 - 700nm | <b>Coating Specification:</b>                      |
| 400 - 700                              | <b>Wavelength Range (nm):</b>                      |

## Threading & Mounting

|            |                              |
|------------|------------------------------|
| 33.07      | <b>Mount Thickness (mm):</b> |
| M138 x 1.0 | <b>Mounting Threads:</b>     |

## Regulatory Compliance

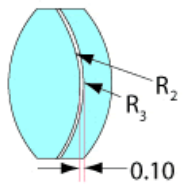
|                      |                                    |
|----------------------|------------------------------------|
| <a href="#">View</a> | <b>Certificate of Conformance:</b> |
|----------------------|------------------------------------|

## Product Details

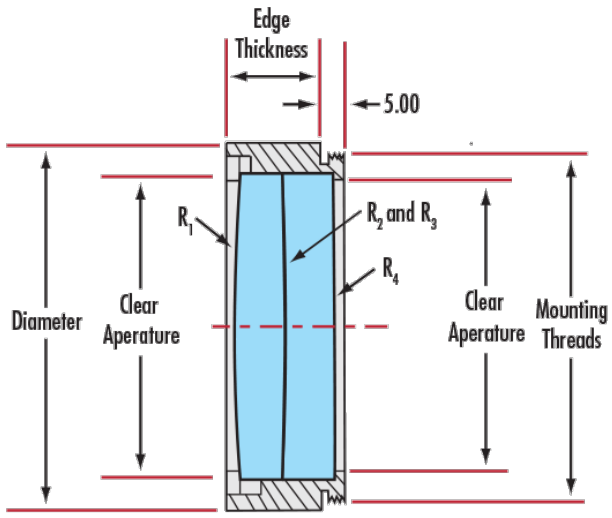
- Offered in Cemented or Air-Spaced Designs
- Mounted Versions Available for Easy Integration
- Feature MgF<sub>2</sub> Anti-Reflection Coating

TECHSPEC® Large Precision Achromatic Lenses offer near-diffraction limited performance across the designated wavelength range. These color-corrected achromatic lenses feature long focal lengths and are available in either cemented or air-spaced designs. The lenses have a MgF<sub>2</sub> anti-reflection coating and are available in diameters up to 140mm. TECHSPEC® Large Precision Achromatic Lenses, in the mounted version, feature a male mounting thread for easy integration into optical systems. Adhesive foil spacers and mounting instructions are included for unmounted, air-spaced achromatic lenses.

## Technical Information



Airspaced



## Coating Curves