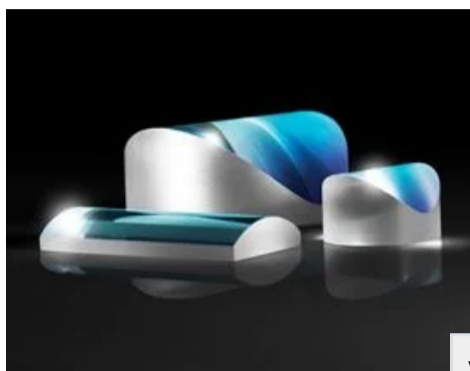


[See all 227 Products in Family](#)

[All Products](#) / [Optics](#) / [Optical Lenses](#) / [Cylinder Lenses](#) / [Illumination Grade Cylinder Lenses](#) / [Illumination Grade PCX Cylinder Lenses](#)

TECHSPEC®

12.5mm H x 25mm L x 100mm FL Uncoated, Illumination Grade PCX Cylinder Lens



Stock #68-035 **20+ In Stock**

1 **£57^{.00}**

ADD TO CART

Volume Pricing	
Qty 1-5	£57.00 each
Qty 6-25	£52.00 each
Qty 26-49	£50.00 each
Need More?	Request Quote

Prices shown are exclusive of VAT/local taxes

Product Downloads	
STEP:stp	PDF Drawing:pdf
IGES:igs	Zemax:zar
Zemax:zmx	eDrawing:eprt
Code V:seq	EO Spec Sheet
Download All	

General

Type: Cylinder Lens, Plano-Convex

Physical & Mechanical Properties

Center Thickness CT (mm):	2.00	Center Thickness Tolerance (mm):	±0.1
Dimensional Tolerance (mm):	+0.0/-0.2	Dimensions (mm):	12.5 x 25.0
Edge Thickness ET (mm):	1.62		

Optical Properties

Effective Focal Length EFL (mm):	100.00	Substrate: N-BK7	
f/#:	8	Numerical Aperture NA:	0.06
Coating:	Uncoated	Wavelength Range (nm):	350 - 2200
Back Focal Length BFL (mm):	98.66	Focal Length Tolerance (%):	±3
Radius R₁ (mm):	51.68	Surface Quality:	60-40

Regulatory Compliance

RoHS 2015: [Compliant](#)

REACH 201: [Compliant](#)

Certificate of Conformance: [View](#)

Need different specs or modifications?

Edmund Optics offers comprehensive custom manufacturing services for optical and imaging components tailored to your specific application requirements. Whether in the prototyping phase or preparing for full-scale production, we provide flexible solutions to meet your needs. Our experienced engineers are here to assist—from concept to completion.

Our capabilities include:

- Custom dimensions, materials, coatings, and more
- High-precision surface quality and flatness
- Tight tolerances and complex geometries
- Scalable production—from prototype to volume

Learn more about our [custom manufacturing capabilities](#) or submit an inquiry [here](#).

Product Details

- N-BK7 Substrate for Broadband Performance
- Cost-Effective for OEM Integration
- Multiple Coating Options Available

TECHSPEC® Illumination Grade PCX Cylinder Lenses are similar to Plano-Convex (PCX) lenses in profile, but include a portion of a cylinder instead of a sphere. These lenses focus light in one dimension and can transform a point of light into a line. TECHSPEC® Illumination Grade PCX Cylinder Lenses are available in circular and rectangular versions, along with multiple coating options. Cylinder lenses are ideal for line projection in machine vision applications or guidance systems.

Note: For negative focal length cylinder lenses, see our [TECHSPEC® Illumination Grade PCV Cylinder Lenses](#).

LASER OPTICS

 MADE BY EDMUND OPTICS®

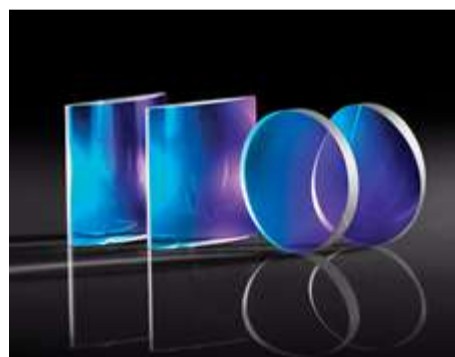
[LEARN MORE](#)

Technical Information

Related Products



Illumination Grade PCV
Cylinder Lenses



Imaging Grade PCX
Cylinder Lenses



Laser Grade Laser Line
Cylinder Lenses



Laser Grade Broadband
Cylinder Lenses

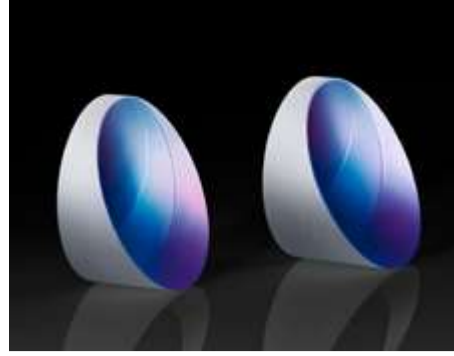
Frequently Purchased Together



#32-477 - 25.0mm Dia. x 50.0mm
FL Uncoated, Plano-Convex Lens
£26.20

#32-481 - 25.0mm Dia. x 100.0mm
FL Uncoated, Plano-Convex Lens
£26.20

#43-650 - 4° Beam Dev. Uncoated,
N-BK7 Wedge Prism
£43.60

#45-026 - 25.0mm Dia. x -100 FL,
Uncoated, Plano-Concave Lens
£29.20