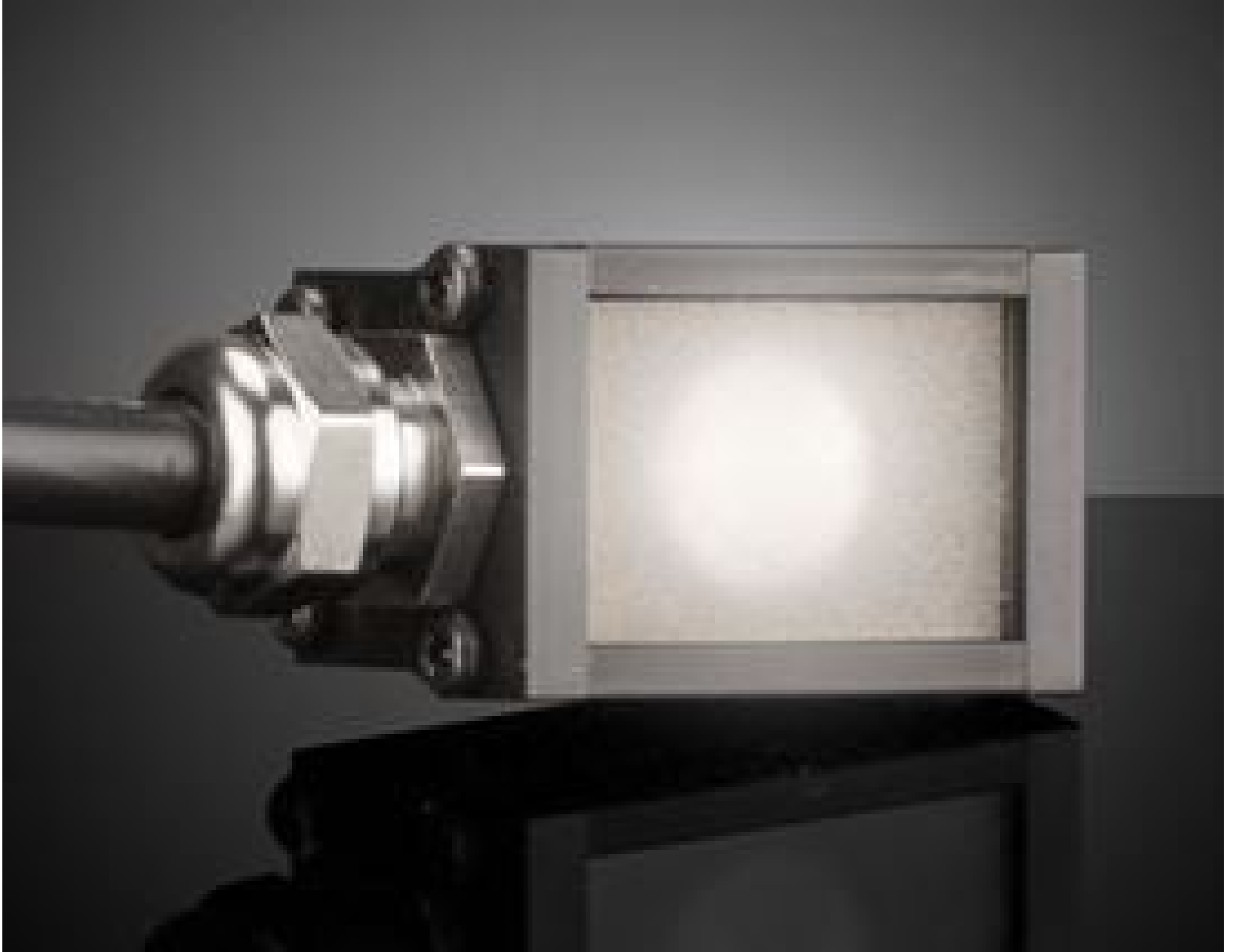


[See all 9 Products in Family](#)

0.8" x 1.0", White, MicroBrite Compact Spot Light

See More by [Advanced Illumination](#)



Advanced Illumination MicroBrite Compact Spot Lights

Stock **#18-581** **3 In Stock**

1 £320⁰⁰

ADD TO CART

Volume Pricing	
Qty 1+	£320.00 each
Need More?	Request Quote

! Prices shown are exclusive of VAT/local taxes

Product Downloads

General

SL243-WHIC **Model Number:**

50000 **LED Lifetime (hours):**

LED Illuminator **Type of Illumination:**

Note:
Optional Manual Intensity Adjustment [#86-887](#) and [#89-555](#) are Available

Advanced Illumination	Manufacturer:
Spot Light	Geometry:
Constant	Illumination Mode:

Physical & Mechanical Properties

31.8 x 20.5 x 20.5	Dimensions (mm):
24	Weight (g):

Optical Properties

White	Color:
-------	---------------

Electrical

0.19A	Minimum Input Current:
-------	-------------------------------

Hardware & Interface Connectivity

Flying Leads	Connector:
Power Supply Required and Sold Separately. USA: #66-855 Europe: #66-855 Japan: #89-513 Korea: #33-773 China: #66-855	Power Supply:

2	Length of Cable (m):
---	-----------------------------

Environmental & Durability Factors

0 to +60	Operating Temperature (°C):
----------	------------------------------------

Regulatory Compliance

Exempt	RoHS 2015:
View	Certificate of Conformance:
Contains SVHC(s)	Reach 233:

Product Details

- Light Output up to 15,000 Lux
- Rectangular Housing with Small Footprint
- [MicroBrite High Intensity Spot Lights](#) Also Available
- Optional Manual Intensity Adjustments ([#86-887](#) and [#89-555](#)) Recommended

Advanced Illumination MicroBrite Compact Spot Lights provide industry leading performance to size ratio and intense illumination up to 15,000 lux in a compact, rectangular housing. These spot lights feature side cable entries and strategically placed M4 T-slot mounting points, allowing for improved heat dissipation through conduction. Compared to round format spot lights, these MicroBrite Compact Spot Lights can efficiently house more LEDs, allowing for increased power in a small footprint. Advanced Illumination MicroBrite Compact Spot Lights are ideal for machine vision applications with small footprint such as small-parts manufacturing and micromachining.

Note: Requires 24V power supply [#66-855](#). Manual Intensity Adjustment [#86-887](#) and [#89-555](#) are recommended and sold separately.