

**TECHSPEC® 116mm Dia x 1524.7mm FL Achromatic Lens, Mtd**



Stock **#54-568** **3 In Stock**

⊖ 1 ⊕ £1,192.<sup>00</sup>

**ADD TO CART**

Volume Pricing	
Qty 1-5	£1,192.00 each
Qty 6-25	£1,012.00 each
Qty 26-49	£952.00 each
Need More?	<a href="#">Request Quote</a>

ⓘ Prices shown are exclusive of VAT/local taxes

Product Downloads

**General**

Achromatic Lens **Type:**

**Physical & Mechanical Properties**

116.00 +0.00/-0.12 **Diameter (mm):**

98.00 **Clear Aperture CA (mm):**

5.00	<b>Centering (arcmin):</b>
12.37	<b>Center Thickness CT 1 (mm):</b>
8.76	<b>Center Thickness CT 2 (mm):</b>
-2169.77	<b>Radius R<sub>4</sub> (mm):</b>
23.35	<b>Edge Thickness ET (mm):</b>
Mounted, Airspaced 0.10mm	<b>Construction:</b>
Protective as needed	<b>Bevel:</b>

## Optical Properties

1,524.73	<b>Effective Focal Length EFL (mm):</b>
±1	<b>Focal Length Tolerance (%):</b>
1514.53	<b>Back Focal Length BFL (mm):</b>
587.6	<b>Focal Length Specification Wavelength (nm):</b>
908.13	<b>Radius R<sub>1</sub> (mm):</b>
-626.59	<b>Radius R<sub>2</sub> (mm):</b>
-625.40	<b>Radius R<sub>3</sub> (mm):</b>
<a href="#">N-BK7 / N-SF2</a>	<b>Substrate:</b> <input type="checkbox"/>
60-40	<b>Surface Quality:</b>
14.9	<b>f#:</b>
0.03	<b>Numerical Aperture NA:</b>
MgF <sub>2</sub> (400-700nm)	<b>Coating:</b>
R <sub>avg</sub> ≤ 1.75% @ 400 - 700nm	<b>Coating Specification:</b>
400 - 700	<b>Wavelength Range (nm):</b>

## Threading & Mounting

28.35	<b>Mount Thickness (mm):</b>
M112 x 1.0	<b>Mounting Threads:</b>

## Regulatory Compliance

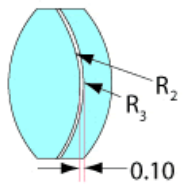
<a href="#">View</a>	<b>Certificate of Conformance:</b>
----------------------	------------------------------------

## Product Details

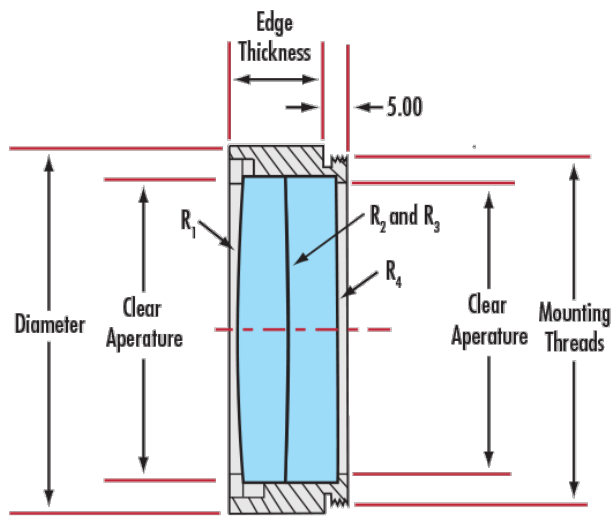
- Offered in Cemented or Air-Spaced Designs
- Mounted Versions Available for Easy Integration
- Feature MgF<sub>2</sub> Anti-Reflection Coating

TECHSPEC® Large Precision Achromatic Lenses offer near-diffraction limited performance across the designated wavelength range. These color-corrected achromatic lenses feature long focal lengths and are available in either cemented or air-spaced designs. The lenses have a MgF<sub>2</sub> anti-reflection coating and are available in diameters up to 140mm. TECHSPEC® Large Precision Achromatic Lenses, in the mounted version, feature a male mounting thread for easy integration into optical systems. Adhesive foil spacers and mounting instructions are included for unmounted, air-spaced achromatic lenses.

## Technical Information



Airspaced



## Coating Curves

;