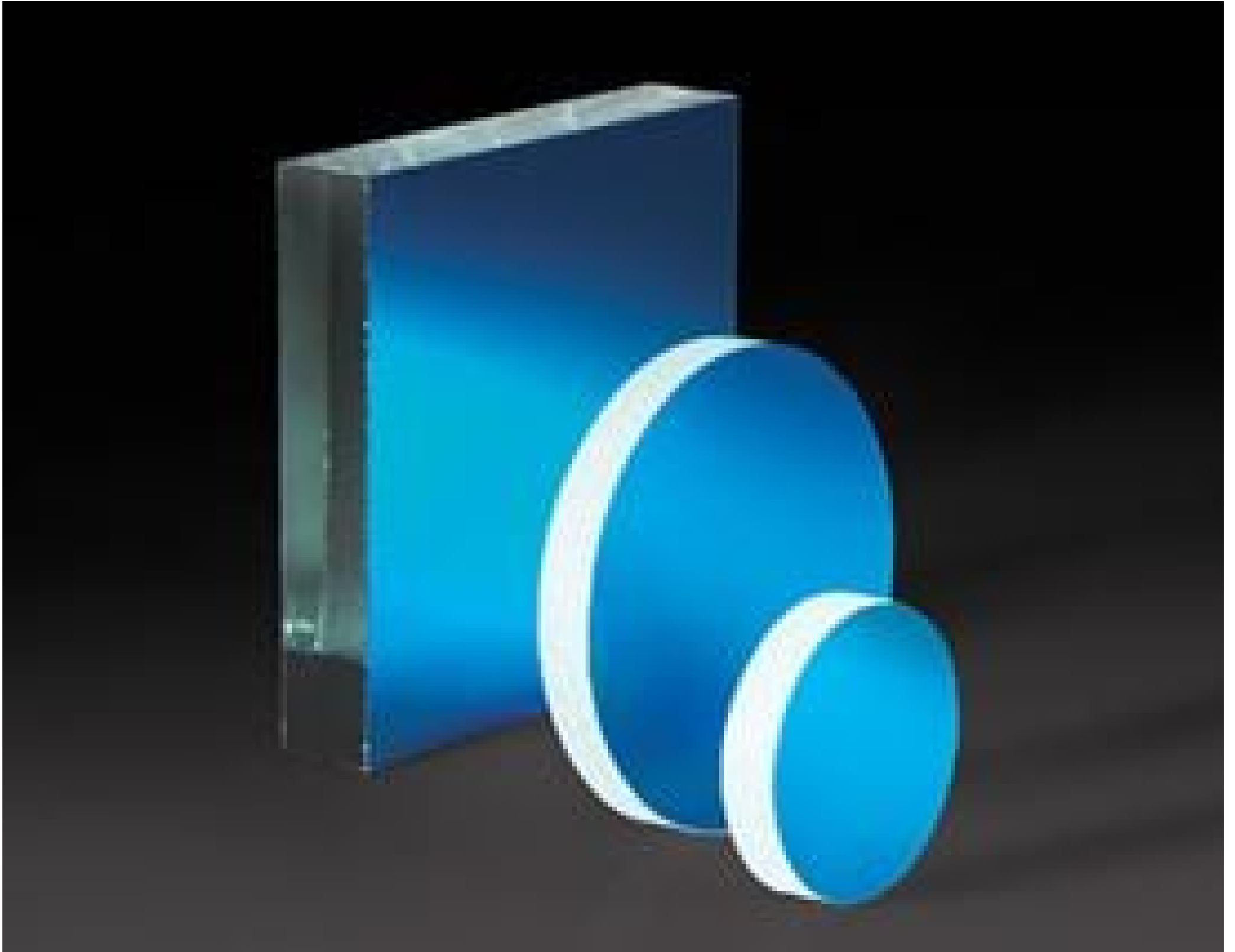


## 10mm Diameter Laser Diode Mirror



Stock **#43-853** **20+ In Stock**

£22<sup>40</sup>

**ADD TO CART**

Volume Pricing	
Qty 1-10	£22.40 each
Qty 11-24	£17.60 each
Need More?	<a href="#">Request Quote</a>

**i** Prices shown are exclusive of VAT/local taxes

### Product Downloads

#### General

Flat Mirror Type:

#### Physical & Mechanical Properties

10.00 ±0.25 Diameter (mm):

3.00 Thickness (mm):

**Dimensional Tolerance (mm):**

±0.25

**Optical Properties****Coating Type:**

Dielectric

**Coating:**

Dielectric Mirror (500-700nm)

**Design Wavelength DWL (nm):**

633

**Substrate:** 

Float Glass

**Coating Specification:**R<sub>abs</sub> >97% @ 633nm**Surface Quality:**

80-50

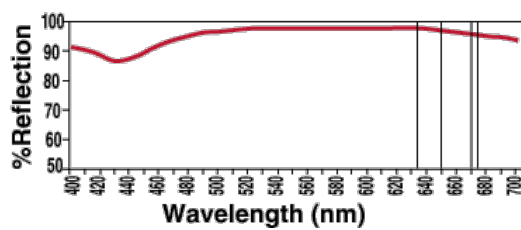
**Environmental & Durability Factors****Durability:**

ML-C-48497A

**Regulatory Compliance****RoHS 2015:**[Compliant](#)**Certificate of Conformance:**[View](#)**Reach 247:**[Compliant](#)**Product Details**

- Over 95% Reflectance of Visible Laser Diode Light
- Ideal for Multiple Reflection Systems
- Coating Optimized for 633nm at 45° AOI

Visible Laser Diode Mirrors are specially coated to attain maximum reflection of visible laser diodes. Optimized for 633nm at a 45° angle of incidence, these mirrors provide 97% reflectance versus only 85 - 90% for standard first surface mirrors. This reduced loss is particularly important in multiple reflection systems, where loss can significantly impact system efficiency. Visible Laser Diode Mirrors feature a float glass substrate and are ideal for multiple reflection systems.

**Technical Information****Visible Laser Diode Mirror Reflectance at 45°**

@ 500nm	95.0%
@ 550nm	97.0%
@ 600nm	97.5%
@ 633nm	97.0%
@ 635nm	97.0%
@ 650nm	96.5%
@ 670nm	96.0%
@ 675nm	95.0%
@ 700nm	94.5%

**Quote Your Size****Compatible Mounts**

