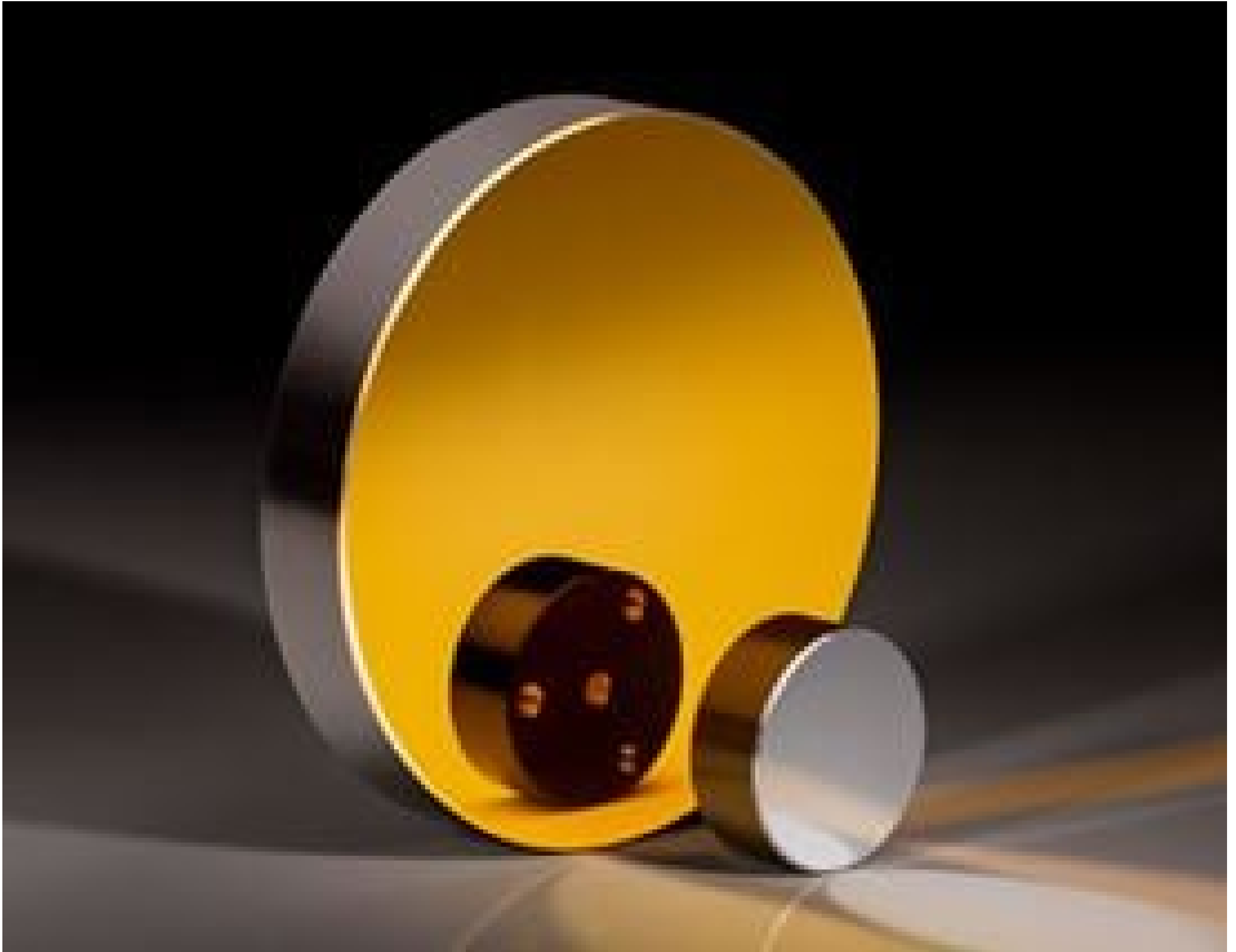


[See all 10 Products in Family](#)

## 101.6mm Dia., Gold Coated, Aluminum Substrate Mirror



Metal Substrate Mirrors

Stock #20-155 **5 In Stock**

⊖ 1 ⊕ £992.<sup>00</sup>

**ADD TO CART**

### Volume Pricing

Qty 1-5	£992.00 each
Qty 6-25	£888.00 each
Qty 26-49	£848.00 each
Need More?	<a href="#">Request Quote</a>

ⓘ Prices shown are exclusive of VAT/local taxes

### Product Downloads

### General

Flat Mirror **Type:**

### Physical & Mechanical Properties

101.60 +0.00/-0.40 **Diameter (mm):**

**Thickness (mm):**

12.70

90 Clear Aperture (%):

<175 Surface Roughness (Å):

### Optical Properties

0.7 - 12 Wavelength Range (µm):

Metal Coating Type:

Protected Gold (700-12000nm) Coating:

700 - 12000 Wavelength Range (nm):

Aluminum 6061-T6 Substrate:

Coating Specification:  
R<sub>avg</sub> >94% @ 700 - 800nm  
R<sub>avg</sub> >97% @ 800 - 2000nm  
R<sub>avg</sub> >98% @ 2 - 12µm

80-50 Surface Quality:

λ/2 Surface Flatness (RMS):

### Threading & Mounting

8-32 TPI Tapped Holes Mounting Threads:

### Regulatory Compliance

Compliant RoHS 2015:

View Certificate of Conformance:

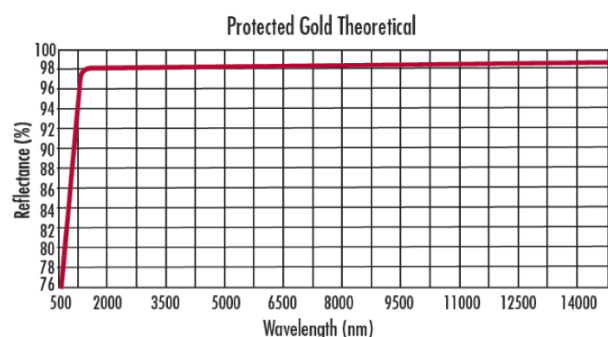
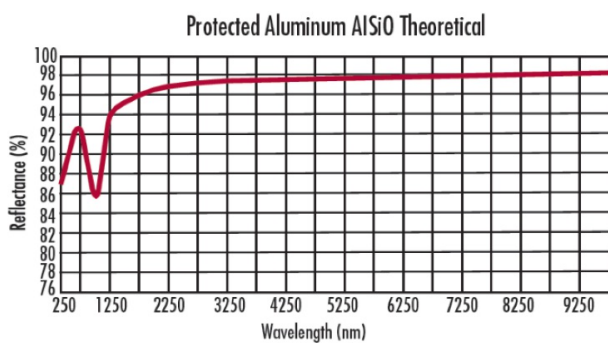
Compliant Reach 247:

## Product Details

- Aluminum Substrate Mirrors
- Ideal for LWMR Laser Applications
- Aluminum and Gold Coating Options

Metal Substrate Mirrors are available with either a protected aluminum or gold coating and are ideal for LWMR (greater than 2000nm) laser applications. Due to the 17.5nm roughness of the diamond turned surface, these mirrors may not be suitable for UV and visible applications that require low scatter. The backs of the mirrors are machined flat and are tapped with 3 holes for easy, accurate mounting. Metal Substrate Mirrors are aluminum substrate, diamond turned metal mirrors. These mirrors are available in five diameters: 25.4, 38.1, 50.8, 76.2, and 101.6mm.

## Technical Information



## Compatible Mounts

