

[All Products](#) / [Optomechanics](#) / [Manual Translation Stages and Slides](#) / [Manual Stages and Slides](#)

## Micro Manual Positioning Stages



- Two Micro Sizes Available
- Versions with Covered Rails
- Three Travel Selections
- X, XY, and XYZ Axis Models

### Common Specifications

#### Physical & Mechanical Properties

<b>Guide System:</b>	Ball Bearing	<b>Drive Orientation:</b>	Center Drive
<b>Construction:</b>	Aluminum Body, Stainless Steel Rails		

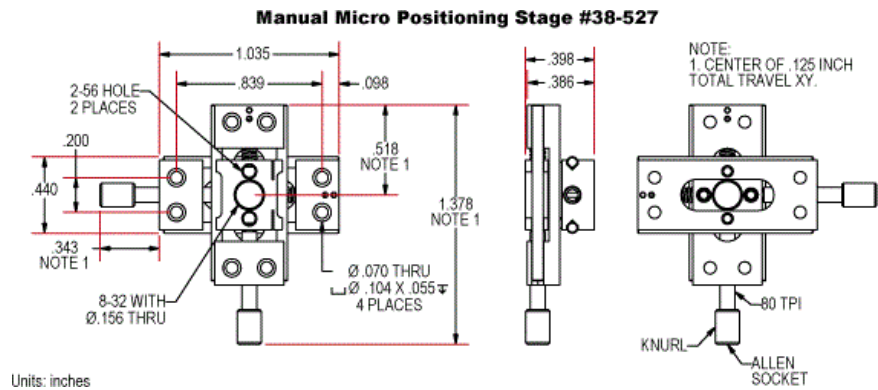
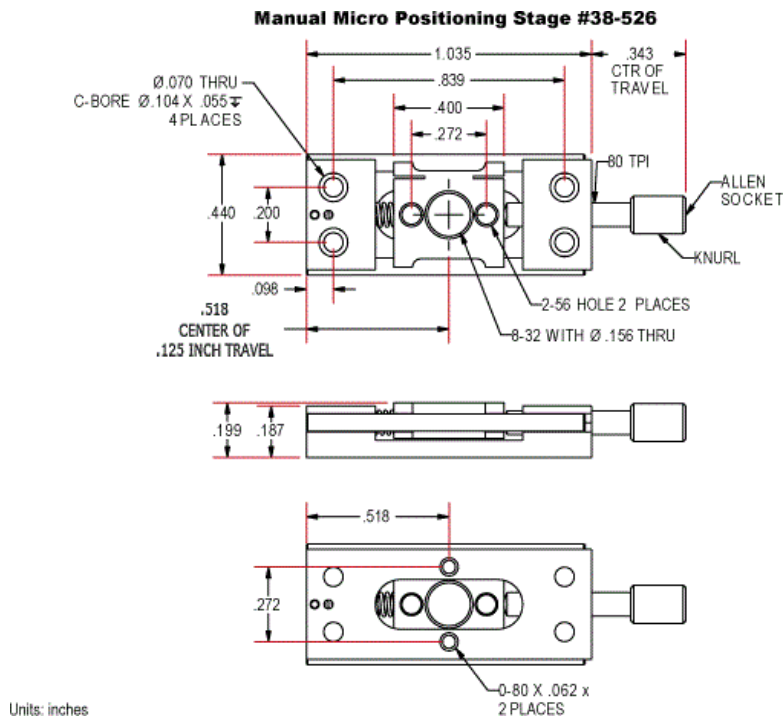
#### Optical Properties

<b>Wobble (mrad):</b>	0.01
-----------------------	------

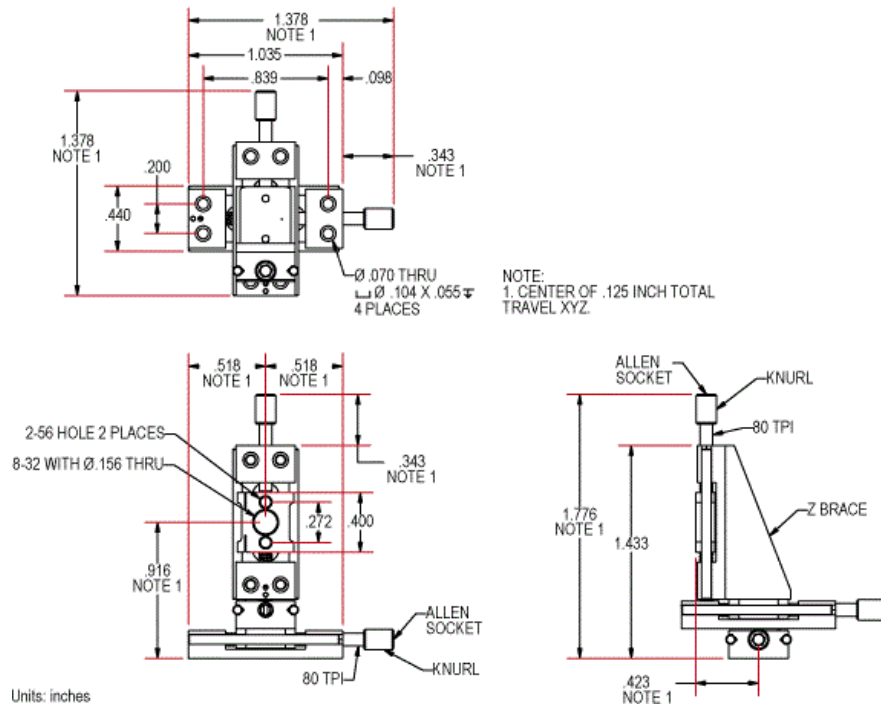
#### Hardware & Interface Connectivity

<b>Type of Drive:</b>	Fine Screw (80 Pitch)
-----------------------	-----------------------

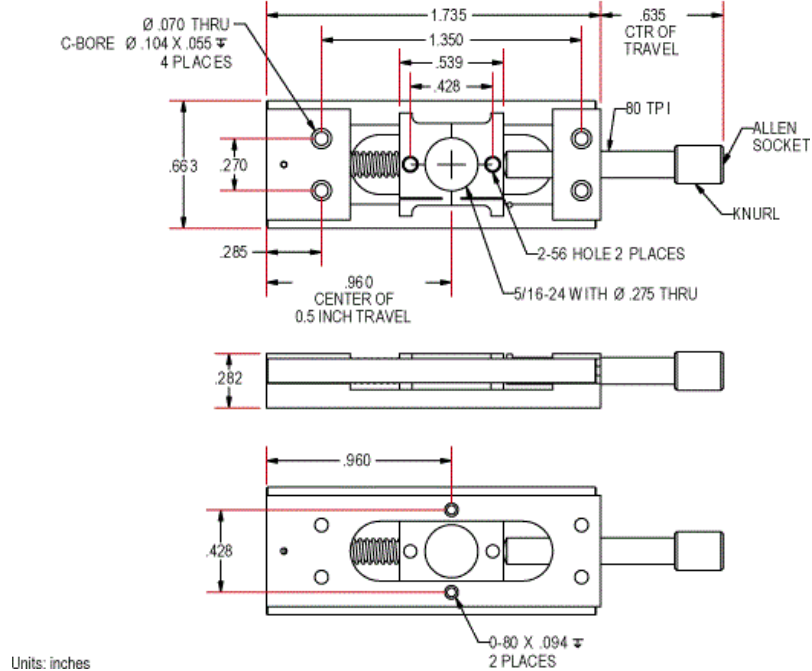
Technical Information



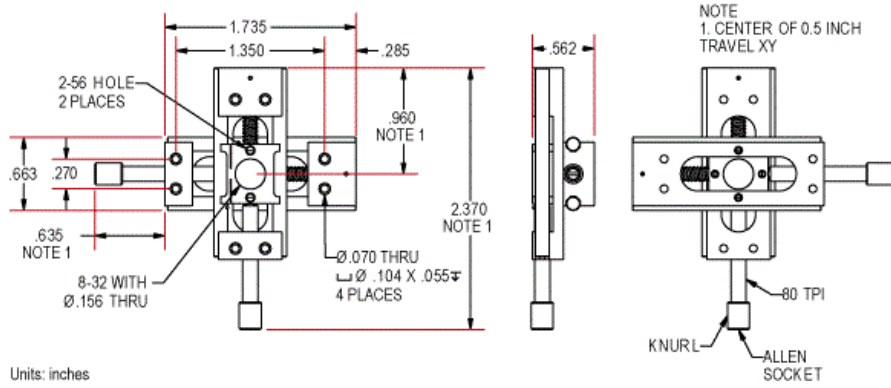
### Manual Micro Positioning Stage #38-528



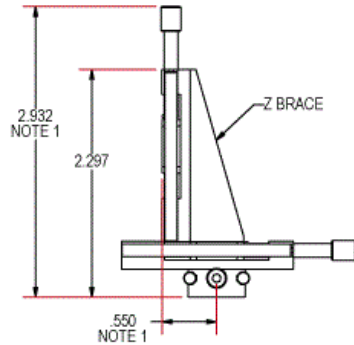
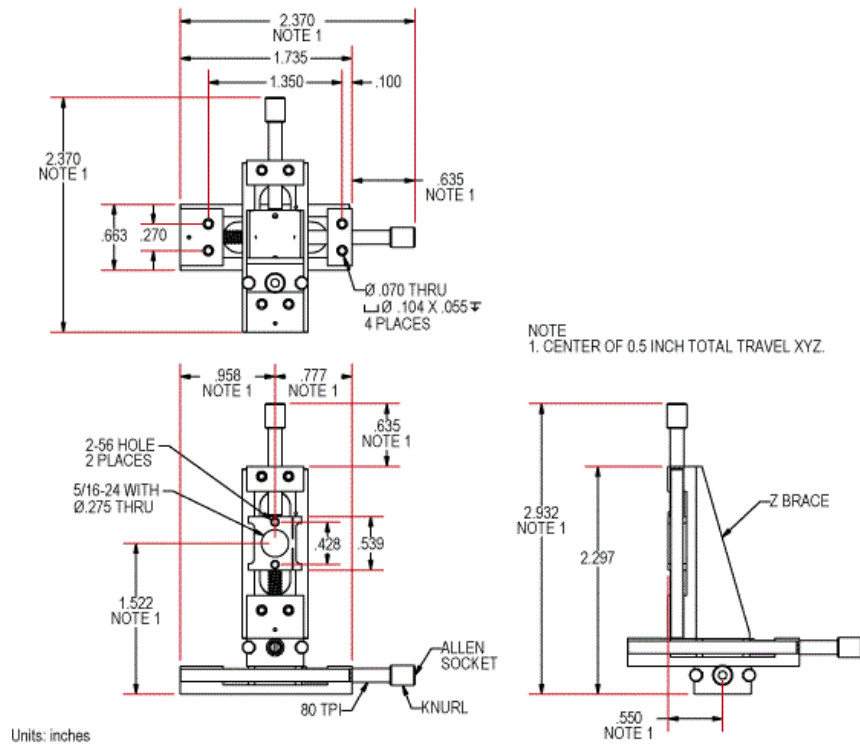
### Manual Micro Positioning Stage #38-531



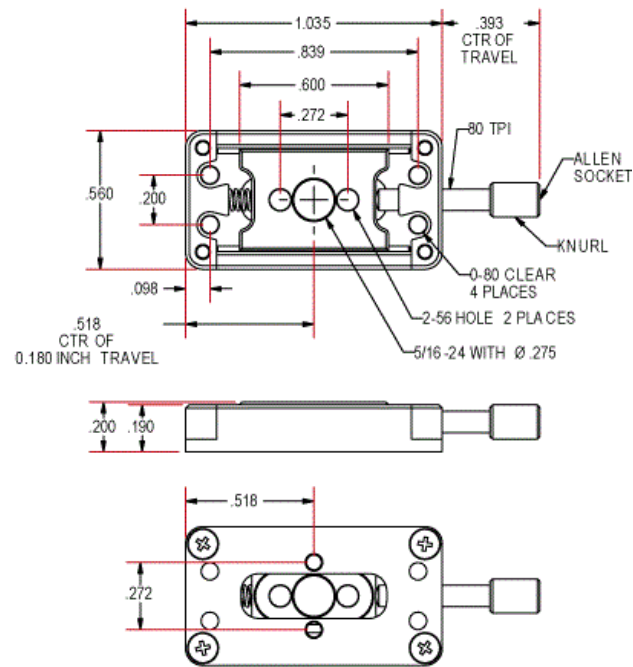
### Manual Micro Positioning Stage #38-532



### Manual Micro Positioning Stage #38-533

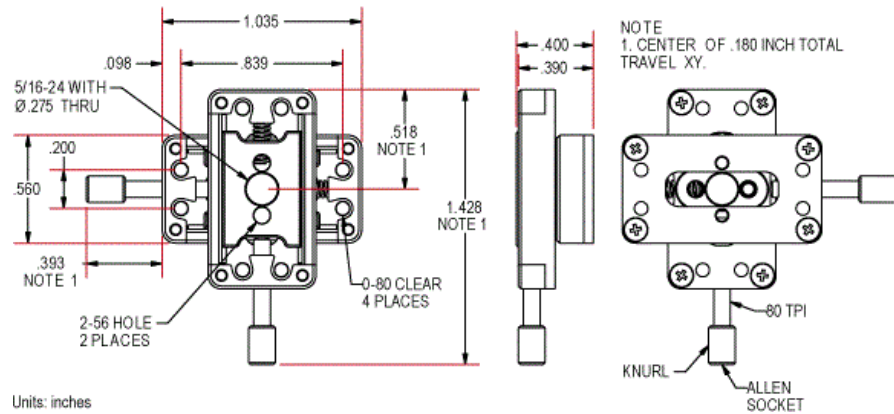


### Manual Micro Positioning Stage #56-416



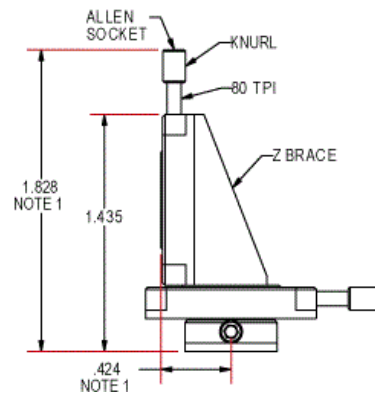
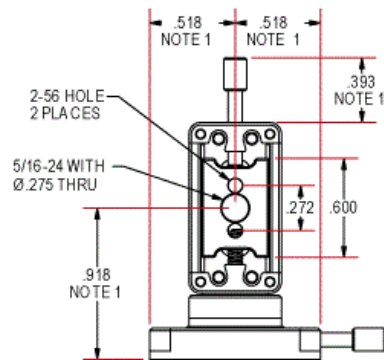
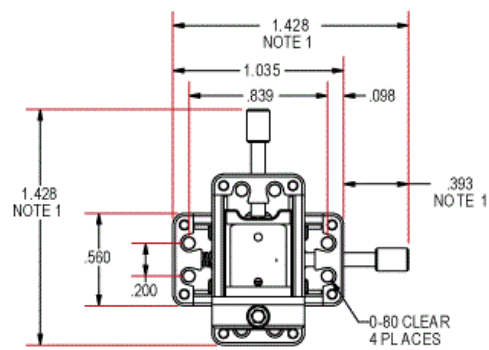
Units: inches

### Manual Micro Positioning Stage #56-417



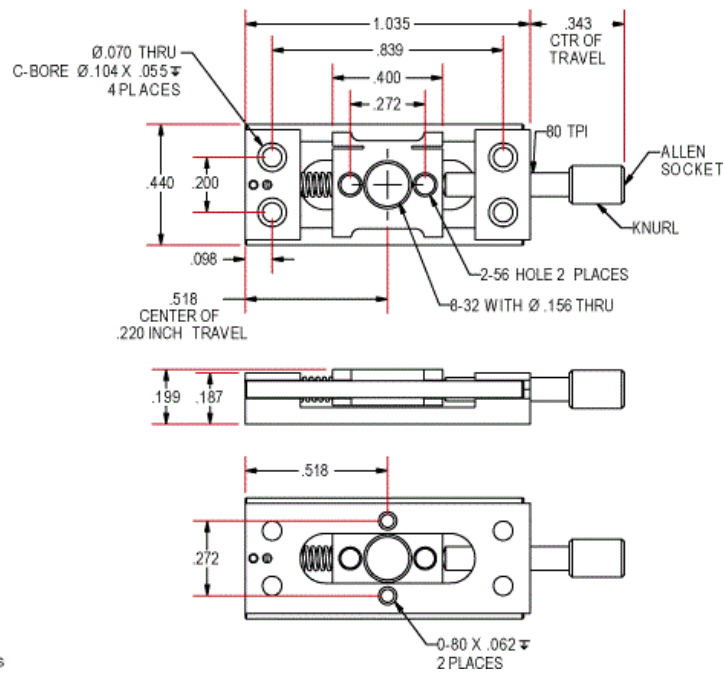
Units: inches

# Manual Micro Positioning Stage #56-418



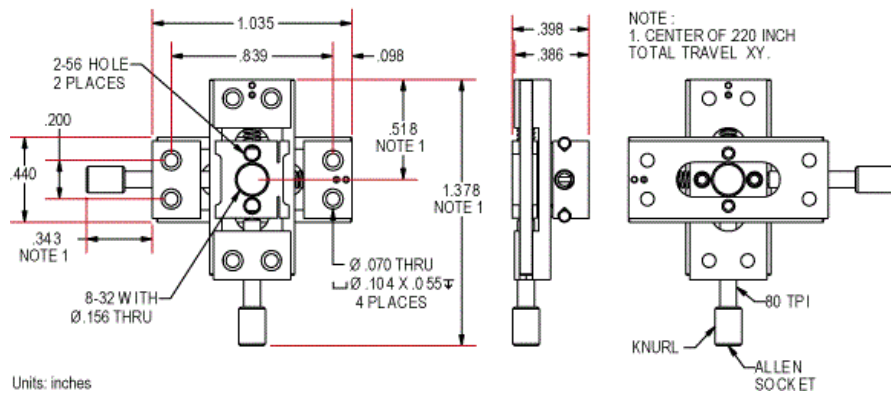
Units: inches

### Manual Micro Positioning Stage #56-419



Units: inches

### Manual Micro Positioning Stage #56-420

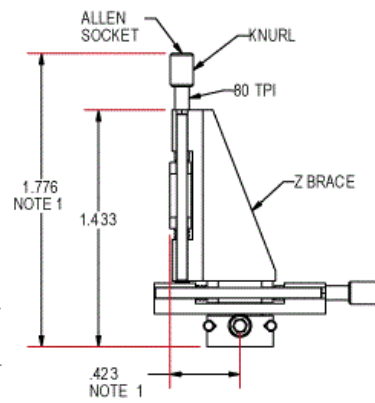
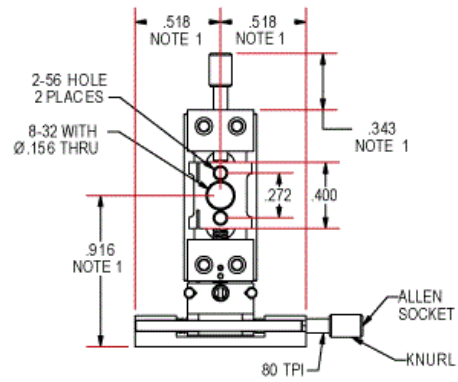


Units: inches

Technical drawing of a 4-way valve assembly. The drawing shows a central valve body with four ports. Dimensions are provided in inches:

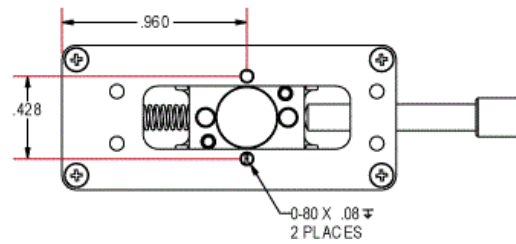
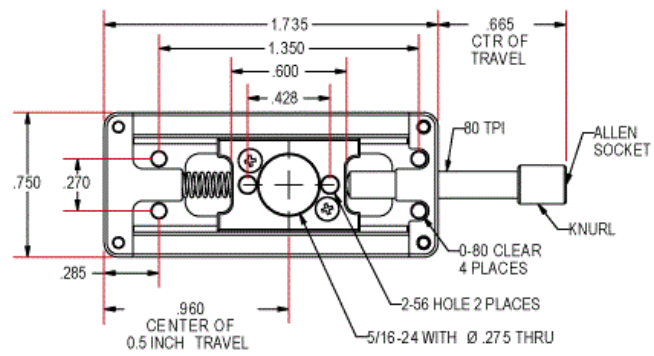
- Overall width: 1.378 (NOTE 1)
- Distance from centerline to the center of the top and bottom ports: 1.035
- Distance from centerline to the center of the left and right ports: .839
- Distance from the centerline to the center of the top and bottom ports (excluding the .034 offset): .098
- Distance from the centerline to the center of the left and right ports (excluding the .034 offset): .343 (NOTE 1)
- Distance from the centerline to the center of the top and bottom ports (excluding the .034 offset): .200
- Distance from the centerline to the center of the left and right ports (excluding the .034 offset): .440
- Port size:  $\varnothing .070$  THRU  $\varnothing .104 \times .055$  4 PLACES

NOTE :  
1. CENTER OF .220 INCH TOTAL  
TRAVEL XYZ.



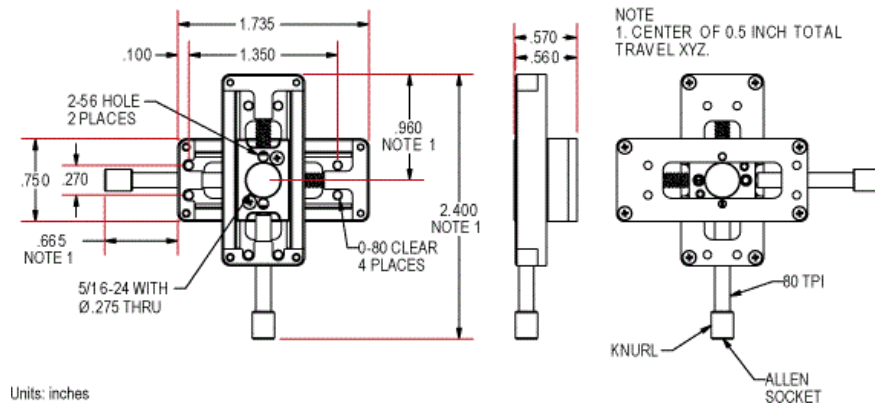


# Manual Micro Positioning Stage #56-422

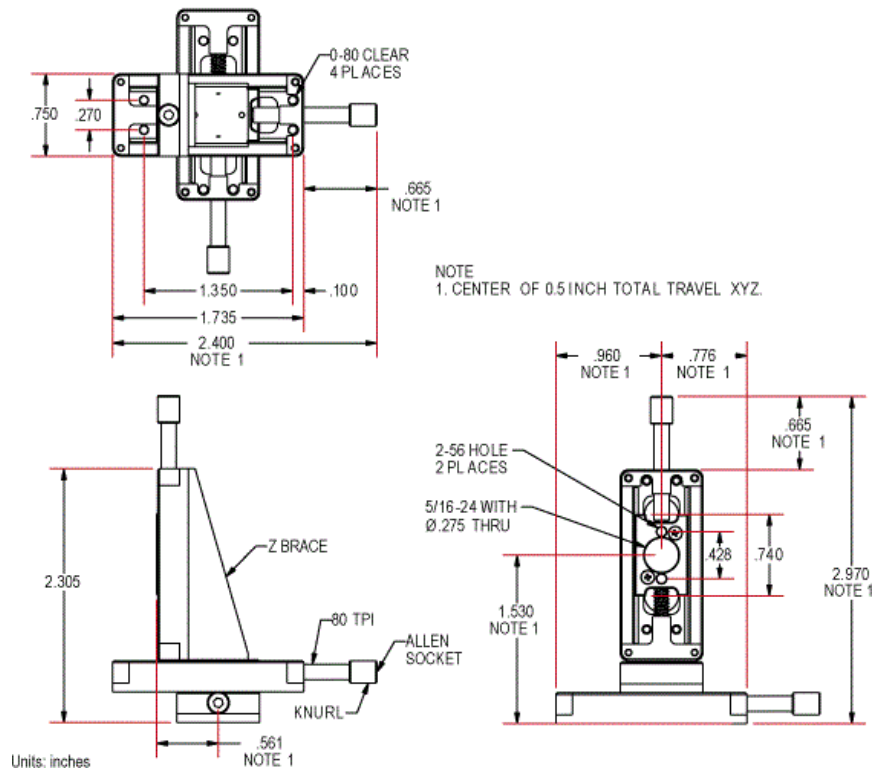


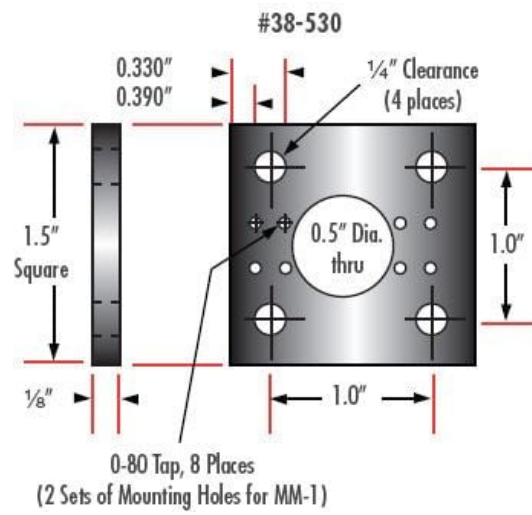
Units: inches

# Manual Micro Positioning Stage #56-423

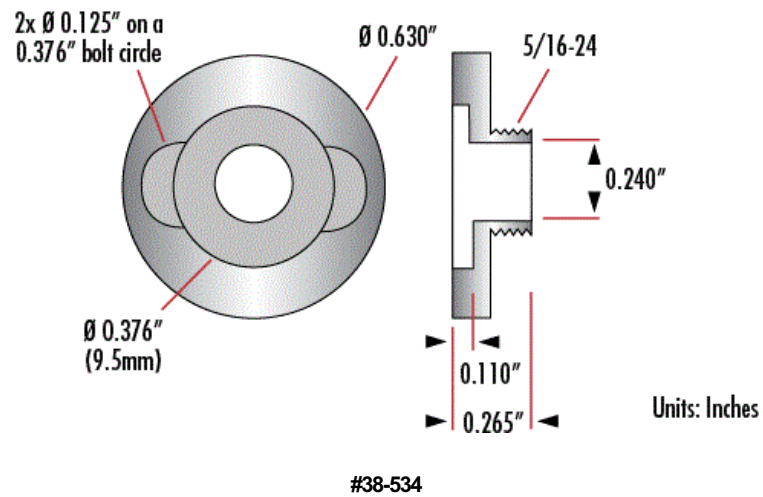


# Manual Micro Positioning Stage #56-424

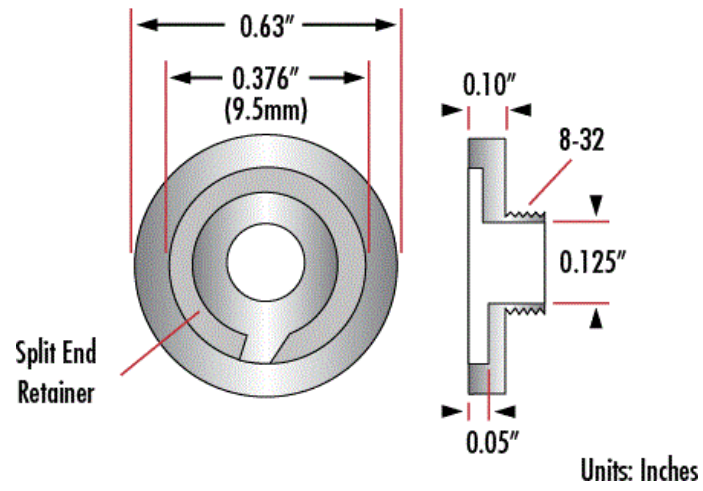




### Pinhole Adapter for Stage Type B, #38-534



# Pinhole Adapter for Stage Type A, #38-529



#38-529

## Products

Type of Movement	Type	Type of Drive	Stage Size (inches)	Travel (inches)	Center Hole	Stock Number	Price	Buy
Linear (X)	English	Fine Screw (80 Pitch)	0.44 x 1.03	0.125	0.155" (3.9mm) Thru with 8-32 TPI Threaded	<a href="#">#38-526</a>	£243.39	2 In Stock
Linear (X)	English	Fine Screw (80 Pitch)	0.44 x 1.03	0.22	0.155" (3.9mm) Thru with 8-32 TPI Threaded	<a href="#">#56-419</a>	£262.65	1 In Stock
Linear (X)	English	Fine Screw (80 Pitch)	0.56 x 1.03	0.125	0.155" (3.94mm) thru with 8-32 tap	<a href="#">#56-416</a>	£262.65	3 In Stock
Linear (X-Y)	English	Fine Screw (80 Pitch)	0.44 x 1.03	0.125	0.155" (3.9mm) Thru with 8-32 TPI Threaded	<a href="#">#38-527</a>	£472.77	1 In Stock
Linear (X-Y)	English	Fine Screw (80 Pitch)	0.44 x 1.03	0.22	0.155" (3.9mm) Thru with 8-32 TPI Threaded	<a href="#">#56-420</a>	£507.79	1 In Stock
Linear (X-Y)	English	Fine Screw (80 Pitch)	0.56 x 1.03	0.125	0.155" (3.94mm) thru with 8-32 tap	<a href="#">#56-417</a>	£472.77	1 In Stock
Linear (X-Y-Z)	English	Fine Screw (80 Pitch)	0.44 x 1.03	0.125	0.155" (3.9mm) Thru with 8-32 TPI Threaded	<a href="#">#38-528</a>	£674.14	1 In Stock
Linear (X-Y-Z)	English	Fine Screw (80 Pitch)	0.44 x 1.03	0.22	0.155" (3.9mm) Thru with 8-32 TPI Threaded	<a href="#">#56-421</a>	£757.31	1 In Stock

Linear (X-Y-Z)	English	Fine Screw (80 Pitch)	0.56 x 1.03	0.125	0.275" (7.0mm) Thru with 5/16-24 TPI Thread	<a href="#">#56-418</a>	£691.65	Contact Us
Linear (X)	English	Fine Screw (80 Pitch)	0.66 x 1.74	0.5	0.275" (7.0mm) Thru with 5/16-24 TPI Thread	<a href="#">#38-531</a>	£243.39	8 In Stock
Linear (X)	English	Fine Screw (80 Pitch)	0.75 x 1.74	0.5	0.275" (7.0mm) Thru with 5/16-24 TPI Thread	<a href="#">#56-422</a>	£262.65	4 In Stock
Linear (X-Y)	English	Fine Screw (80 Pitch)	0.66 x 1.74	0.5	0.275" (7.0mm) Thru with 5/16-24 TPI Thread	<a href="#">#38-532</a>	£472.77	2 In Stock
Linear (X-Y)	English	Fine Screw (80 Pitch)	0.75 x 1.74	0.5	0.275" (7.0mm) Thru with 5/16-24 TPI Thread	<a href="#">#56-423</a>	£472.77	1 In Stock
Linear (X-Y-Z)	English	Fine Screw (80 Pitch)	0.66 x 1.74	0.5	0.275" (7.0mm) Thru with 5/16-24 TPI Thread	<a href="#">#38-533</a>	£674.14	2 In Stock
Linear (X-Y-Z)	English	Fine Screw (80 Pitch)	0.75 x 1.74	0.5	0.275" (7.0mm) Thru with 5/16-24 TPI Thread	<a href="#">#56-424</a>	£691.65	1 In Stock

