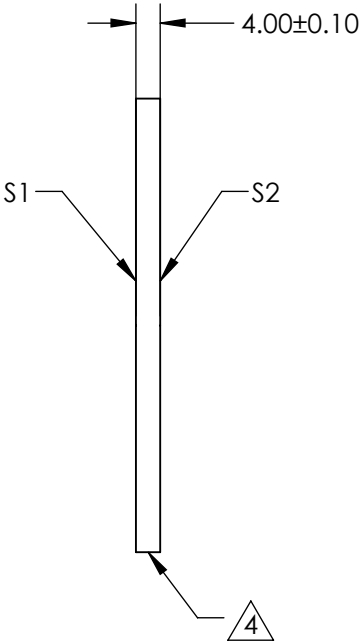
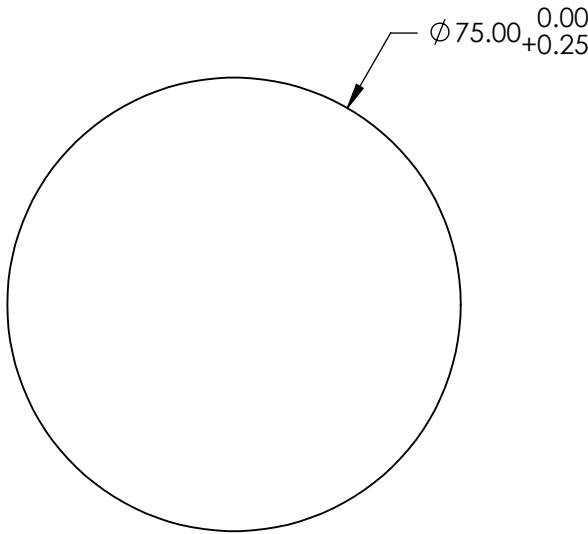


NOTES:

- 1. SUBSTRATE: N-BK7
- 2. S2 TO BE PARALLEL TO S1 TO WITHIN <1 ARCMIN
- 3. COATING (APPLY ACROSS CLEAR APERTURE)
S1 & S2: BBAR (1650-3000nm)
R(AVG)<1% @ 1650 - 3000nm @ 0° AOI
R(ABS) <2% @ 1650 - 3000nm @ 0° AOI


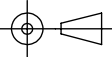
4. FINE GRIND SURFACE

- 5. ROHS COMPLIANT
- 6. SURFACE FLATNESS (P-V):
 $\lambda/4$ (per inch over clear aperture)



**FOR INFORMATION ONLY:
DO NOT MANUFACTURE
PARTS TO THIS DRAWING**

SPECIFICATIONS SUBJECT TO CHANGE WITHOUT NOTICE
DIMENSIONS ARE FOR REFERENCE ONLY

	S1	S2	 Edmund Optics®			
SHAPE	PLANO	PLANO		TITLE	75mm Dia., 1mm Thick, SWIR AR Coated $\lambda/4$ N-BK7 Window	
SURFACE QUALITY	60 - 40	60 - 40		DWG NO	70284	SHEET 5 OF 5
CLEAR APERTURE	ϕ 67.50	ϕ 67.50				
BEVEL	PROTECTED AS NEEDED	PROTECTED AS NEEDED	ALL DIMS IN mm			