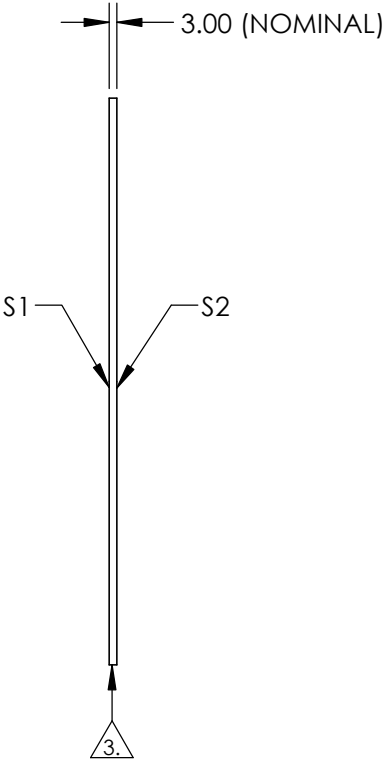
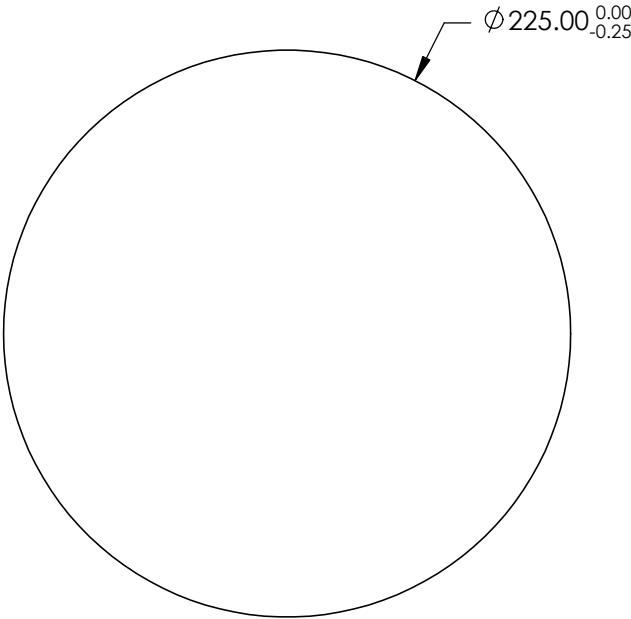



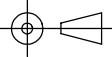
NOTES:

- 1. SUBSTRATE: Float Glass
- 2. COATING (APPLY ACROSS CLEAR APERTURE)
 - S1: Enhanced Aluminum (450-650nm)
 - R(AVG) ≥95% @ 450 - 650nm @ 45°
 - S2: NONE
- 3. EDGES GROUND
- 4. RoHS COMPLIANT



**FOR INFORMATION ONLY:
DO NOT MANUFACTURE
PARTS TO THIS DRAWING**

SPECIFICATIONS SUBJECT TO CHANGE WITHOUT NOTICE
DIMENSIONS ARE FOR REFERENCE ONLY

	S1	S2	 Edmund Optics®			
SHAPE	PLANO	PLANO				
SURFACE QUALITY	60-40	N/A		TITLE		225mm Dia., Enhanced Aluminum, 4-6λ Mirror
SURFACE FLATNESS	4 - 6λ	N/A		DWG NO		29414
CLEAR APERTURE	Ø 202.50	N/A		SHEET		1 OF 1
BEVEL	PROTECTED AS NEEDED	PROTECTED AS NEEDED	ALL DIMS IN	mm		