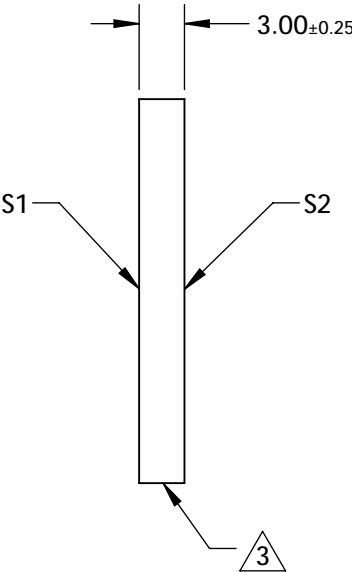
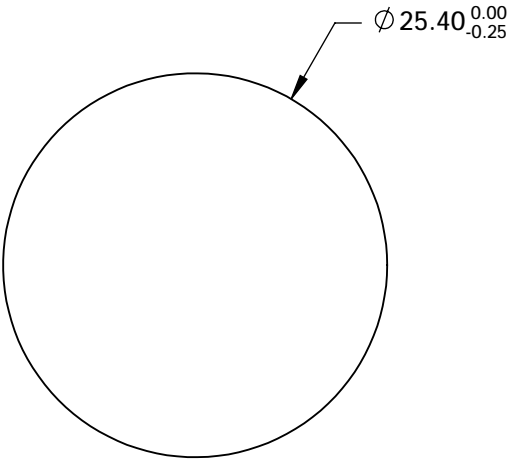
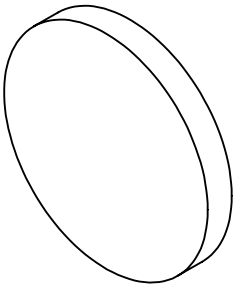


NOTES:

1. SUBSTRATE:
BOROFLOAT®
3. COATING
S1: Enhanced Aluminum (250-700nm)
R(AVG) >89% @ 250 - 450nm
R(AVG) >85% @ 250 - 700nm

S2:NONE
3. FINE GRIND SURFACE (ADD INK NOTE AS NEEDED)
4. ROHS COMPLIANT




**FOR INFORMATION ONLY:
DO NOT MANUFACTURE
PARTS TO THIS DRAWING**

SPECIFICATIONS SUBJECT TO CHANGE WITHOUT NOTICE
DIMENSIONS ARE FOR REFERENCE ONLY

	S1	S2
SHAPE	PLANO	PLANO
SURFACE QUALITY	60 - 40	COMMERCIAL POLISH
CLEAR APERTURE	Ø 22.86	N/A
BEVEL	PROTECTED AS NEEDED	PROTECTED AS NEEDED

THIRD ANGLE
PROJECTION

ALL DIMS IN mm

 Edmund Optics®

TITLE	25.4mm Dia. UV Enhanced Aluminum, λ/4 Mirror	
DWG NO	25735	SHEET 6 OF 12