

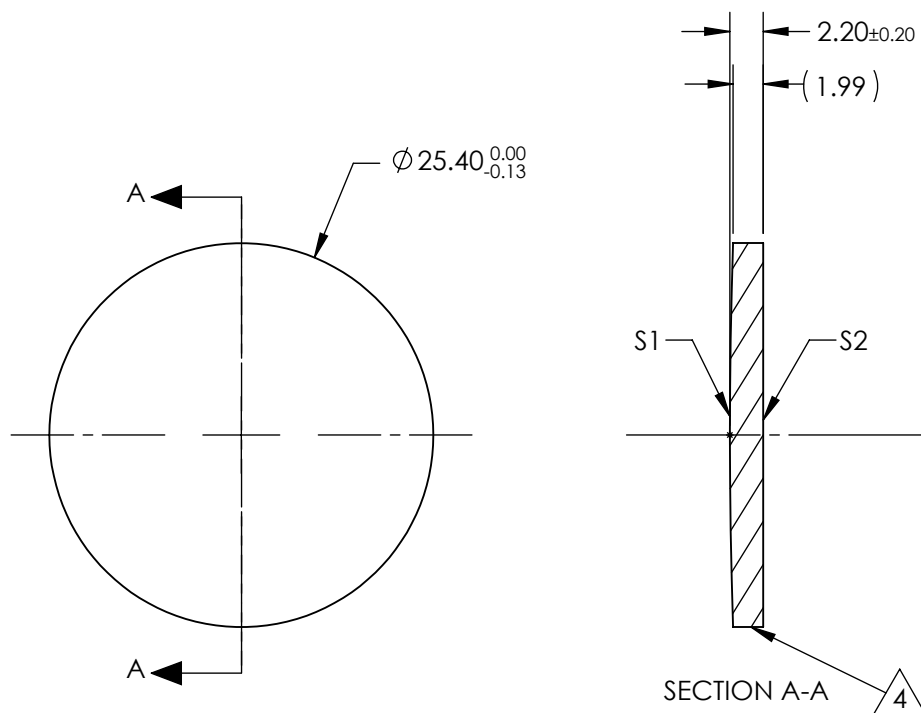
NOTES:

1. SUBSTRATE:
Germanium (Ge)
2. CENTERING TOLERANCE:
<3 ARCMIN
3. COATING (APPLY ACROSS CLEAR APERTURE)
S1 & S2: R(AVG) <5.0% @ 3 - 12 μ m

4. FINE GRIND SURFACE


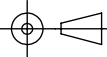
5. FOCAL LENGTH TOLERANCE: $\pm 2\%$

6. ROHS COMPLIANT



**FOR INFORMATION ONLY:
DO NOT MANUFACTURE
PARTS TO THIS DRAWING**

SPECIFICATIONS SUBJECT TO CHANGE WITHOUT NOTICE
DIMENSIONS ARE FOR REFERENCE ONLY

| | | | | | | | |
|------------------------------|---------------------|---------------------|---|--------|---|--|-----------------|
| | S1 | S2 | EFL @ 10.6 μ m | 127.0 |  Edmund Optics® | | |
| SHAPE | CONVEX | PLANO | BFL @ 10.6 μ m | 124.86 | | | |
| RADIUS | 376.7 | INFINITY |  | | TITLE | 25.4mm Dia. x 127mm FL, 3 - 12 μ m Coated, ISP Optics Germanium (Ge) PCX Lens | |
| IRREGULARITY AT 10.6 μ m | $\lambda/20$ | $\lambda/20$ | | | | | |
| SURFACE QUALITY | 60-40 | 60-40 | ALL DIMS IN | | DWG NO | 24874 | |
| CLEAR APERTURE | $\varnothing 22.86$ | $\varnothing 22.86$ | | | | | |
| BEVEL | PROTECTED AS NEEDED | PROTECTED AS NEEDED | mm | | | | SHEET 1 OF 1 |