
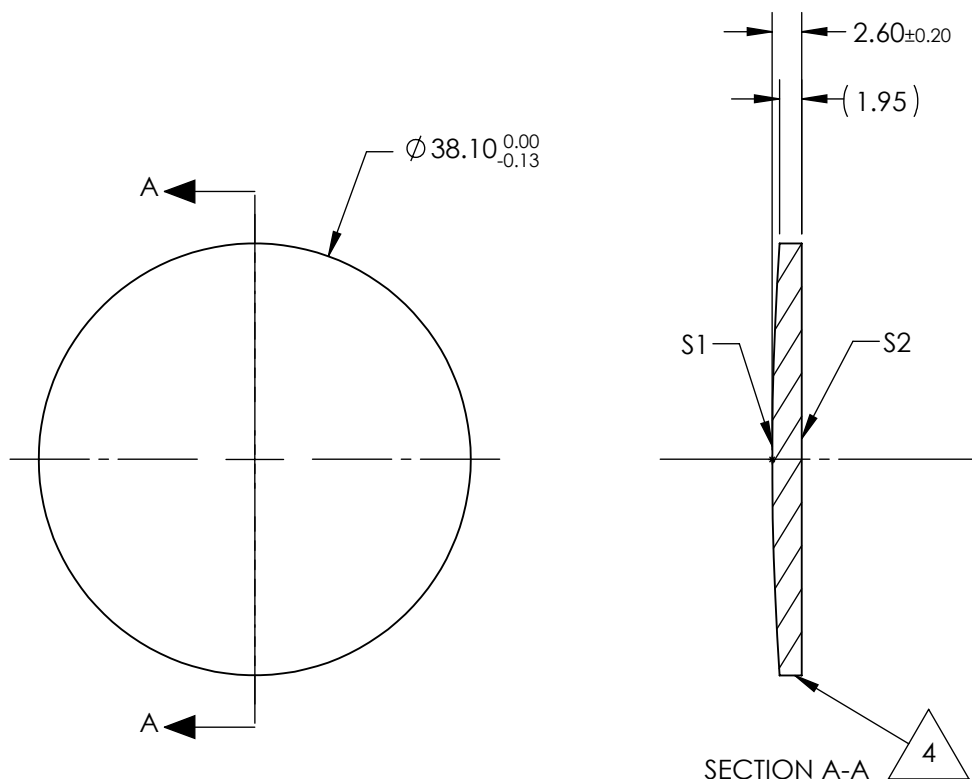


NOTES:

1. SUBSTRATE:
Zinc Selenide (ZnSe), CVD Grade
2. CENTERING TOLERANCE:
<3 ARCMIN
3. COATING (APPLY ACROSS CLEAR APERTURE)
S1 & S2: NONE
4.  FINE GRIND SURFACE
5. FOCAL LENGTH TOLERANCE: $\pm 2\%$
6. ROHS COMPLIANT



**FOR INFORMATION ONLY:
DO NOT MANUFACTURE
PARTS TO THIS DRAWING**

SPECIFICATIONS SUBJECT TO CHANGE WITHOUT NOTICE
DIMENSIONS ARE FOR REFERENCE ONLY

			EFL @ 10.6μm		200.0		DIMENSIONS ARE FOR REFERENCE ONLY	
SHAPE	S1	S2	BFL @ 10.6μm		199.39		Edmund Optics®	
RADIUS	CONVEX	PLANO						
IRREGULARITY AT 10.6μm	281.2	INFINITY						
SURFACE QUALITY	λ/20	λ/20						
CLEAR APERTURE	60-40	60-40						
BEVEL	ø34.29	ø34.29						
	PROTECTED AS NEEDED	PROTECTED AS NEEDED						
			THIRD ANGLE PROJECTION		TITLE		38.1mm Dia. x 200mm FL, Uncoated, ISP Optics ZnSe Plano-Convex Lens	
			ALL DIMS IN		mm		DWG NO	
							24956	
							SHEET 1 OF 1	