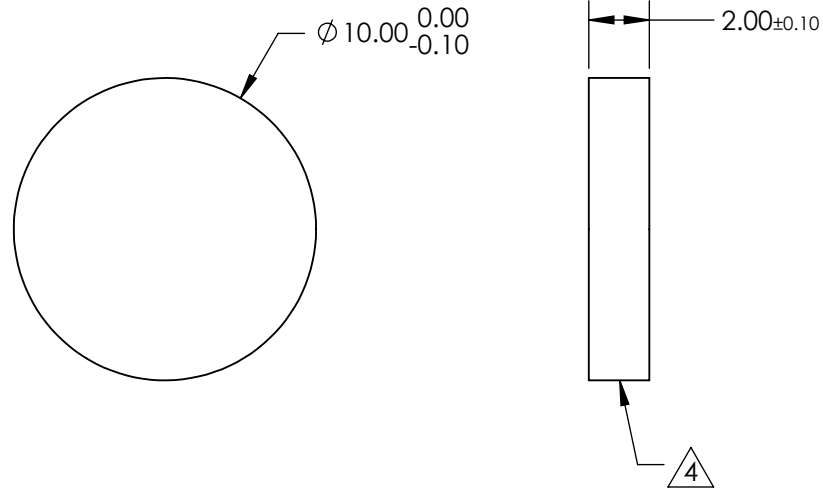
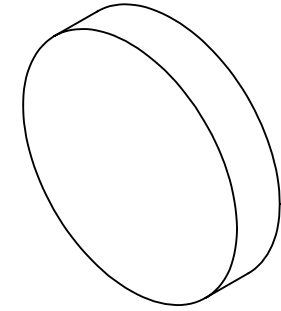


NOTES:

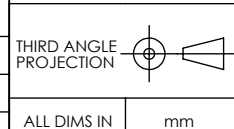
1. SUBSTRATE: Fused Silica (Corning 7980)
2. S2 TO BE PARALLEL WITH S1 TO WITHIN <1 ARCMIN
3. COATING (APPLY ACROSS CLEAR APERTURE)
 S1 & S2: R(ABS) ≤1.5% FROM 750 - 800nm
 R(ABS) ≤1.0% FROM 800 - 1550nm
 R(AVG) ≤0.7% FROM 750 - 1550nm
4. FINE GRIND SURFACE
5. ROHS COMPLIANT



**FOR INFORMATION ONLY:
DO NOT MANUFACTURE
PARTS TO THIS DRAWING**

SPECIFICATIONS SUBJECT TO CHANGE WITHOUT NOTICE
DIMENSIONS ARE FOR REFERENCE ONLY

	S1	S2
SHAPE	PLANO	PLANO
SURFACE QUALITY	40-20	40-20
CLEAR APERTURE	$\phi 9.00$	$\phi 9.00$
BEVEL	PROTECTED AS NEEDED	PROTECTED AS NEEDED



 Edmund Optics®	
TITLE	10mm Dia., 2mm Thick, NIR II Coated, $\lambda/4$ Fused Silica Window
DWG NO	25652
	SHEET 16 OF 26