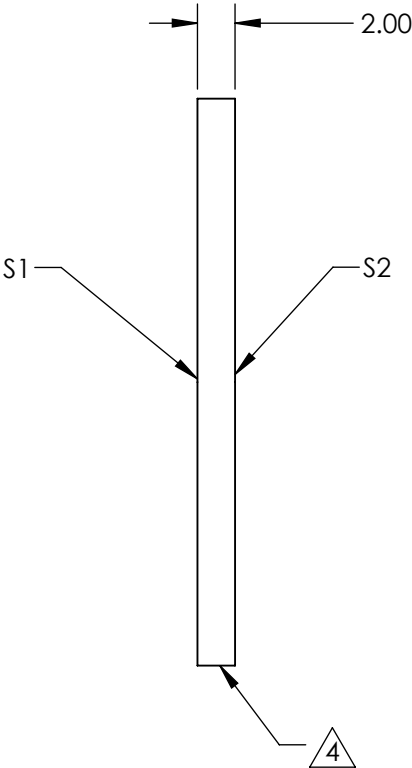
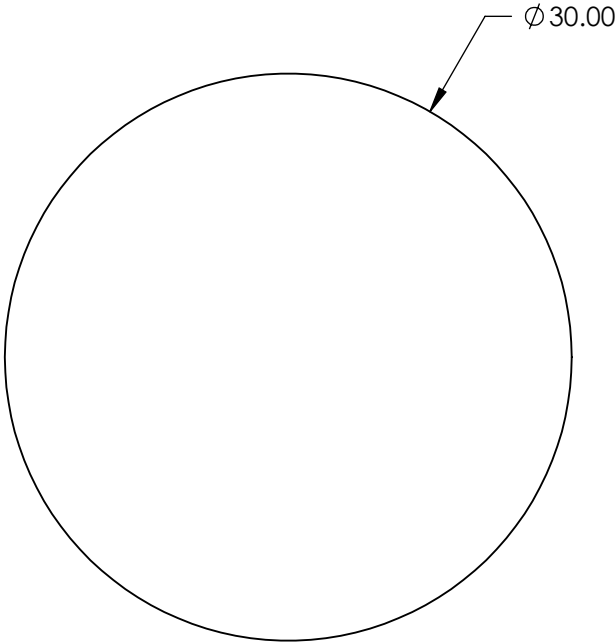


- NOTES:
- 1. SUBSTRATE: N-BK7
 - 2. S2 TO BE PARALLEL WITH S1 TO <1 ARCMIN
 - 3. COATING (APPLY ACROSS CLEAR APERTURE)

S1: NIR I (600-1050nm)
S2: NIR I (600-1050nm)
Ravg ≤0.5% @ 600 - 1050nm

4. FINE GRIND SURFACE

- 5. ROHS COMPLIANT
- 6. TRANSMITTED WAVEFRONT (P-V):
λ/4 (per inch over clear aperture)



FOR INFORMATION ONLY:
DO NOT MANUFACTURE
PARTS TO THIS DRAWING

SPECIFICATIONS SUBJECT TO CHANGE WITHOUT NOTICE
DIMENSIONS ARE FOR REFERENCE ONLY

	S1	S2
SHAPE	PLANO	PLANO
SURFACE QUALITY	60-40	60-40
CLEAR APERTURE	Ø 27.00	Ø 27.00
BEVEL	PROTECTED AS NEEDED	PROTECTED AS NEEDED



ALL DIMS IN mm

Edmund Optics®

TITLE

30mm Dia., 2mm Thick, NIR I Coated λ/4
N-BK7 Window

DWG NO

23431

SHEET
53 OF 84