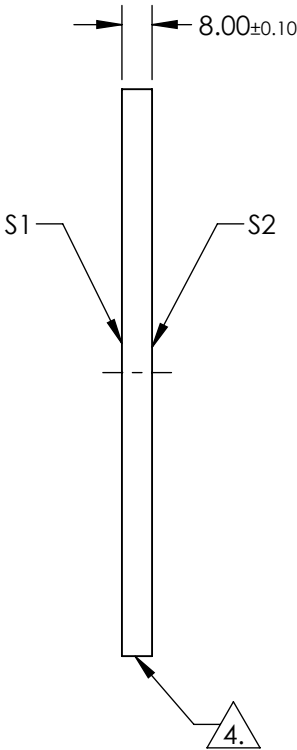
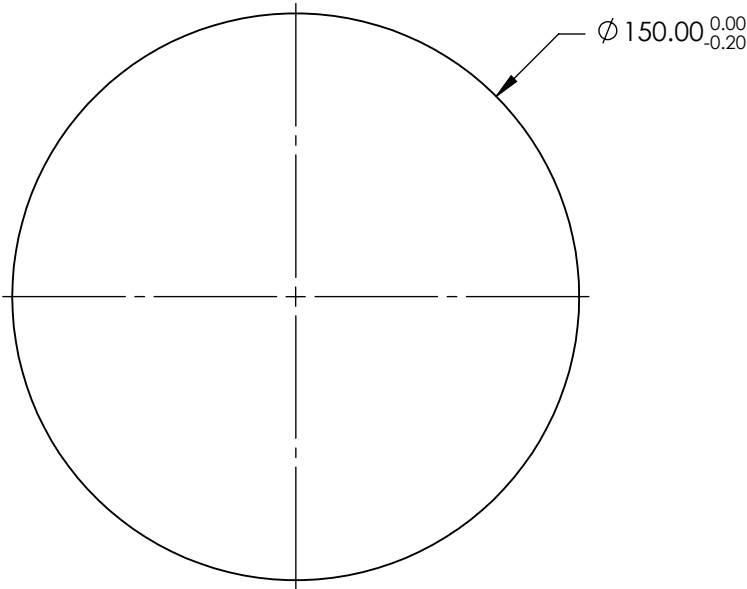


NOTES:

- 1. SUBSTRATE: FUSED SILICA (CORNING 7980)
- 2. COATING (APPLY ACROSS CLEAR APERTURE)
S1 & S2: R(ABS) ≤1.0% FROM 350 - 450nm
R(AVG) ≤1.5% FROM 250 - 700nm
- 3. SURFACE S1 TO BE PARALLEL WITH SURFACE S2 TO WITHIN < 10 ARCSEC


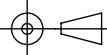
4. FINE GRIND SURFACE

5. ROHS COMPLIANT



**FOR INFORMATION ONLY:
DO NOT MANUFACTURE
PARTS TO THIS DRAWING**

SPECIFICATIONS SUBJECT TO CHANGE WITHOUT NOTICE
DIMENSIONS ARE FOR REFERENCE ONLY

	S1	S2	 Edmund Optics®			
SHAPE	PLANO	PLANO		TITLE	150mm Dia., 8mm Thick, UV-VIS Coated λ/10 Fused Silica Window	
SURFACE QUALITY	40-20	40-20				
CLEAR APERTURE	Ø 135.00	Ø 135.00	ALL DIMS IN	mm	DWG NO	22066
BEVEL	PROTECTED AS NEEDED	PROTECTED AS NEEDED				SHEET 1 OF 1