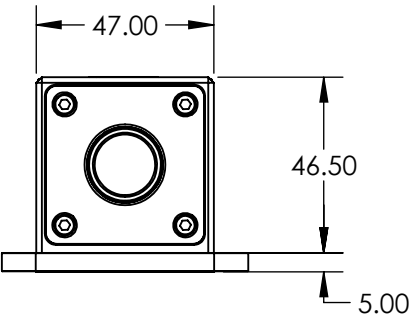
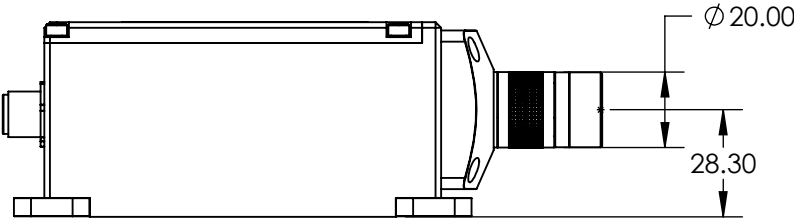
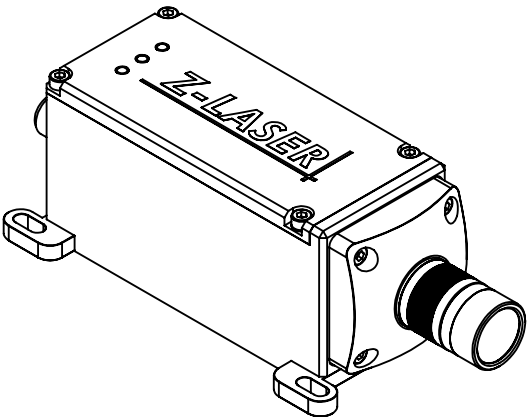
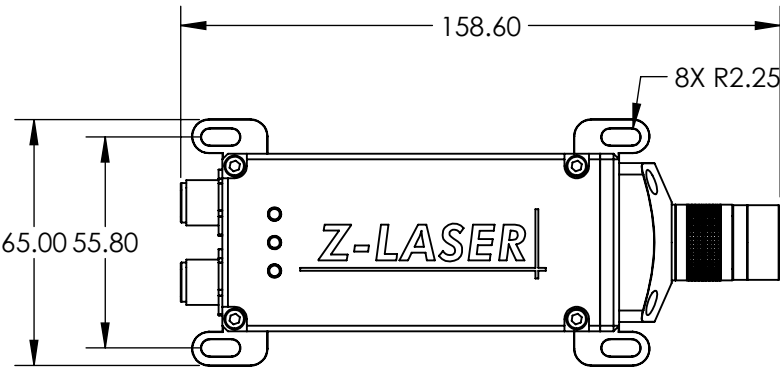


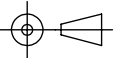
NOTES:
1. ROHS COMPLIANT



**FOR INFORMATION ONLY:
DO NOT MANUFACTURE
PARTS TO THIS DRAWING**

SPECIFICATIONS SUBJECT TO CHANGE WITHOUT NOTICE
DIMENSIONS ARE FOR REFERENCE ONLY

EO® Edmund Optics®

THIRD ANGLE PROJECTION 		TITLE	1700mW, 808nm Laser ZQ1, 30°	
ALL DIMS IN	mm	DWG NO	19442	SHEET 1 OF 1