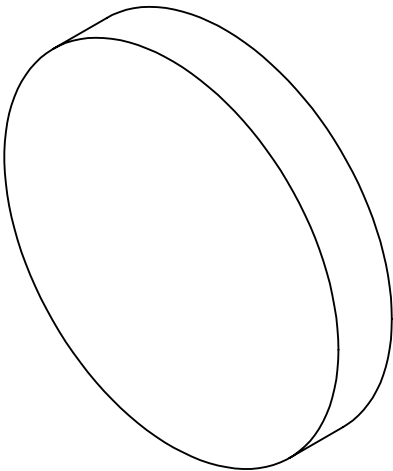
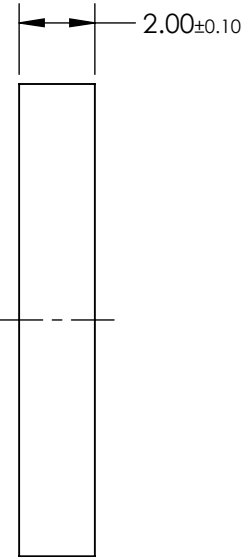
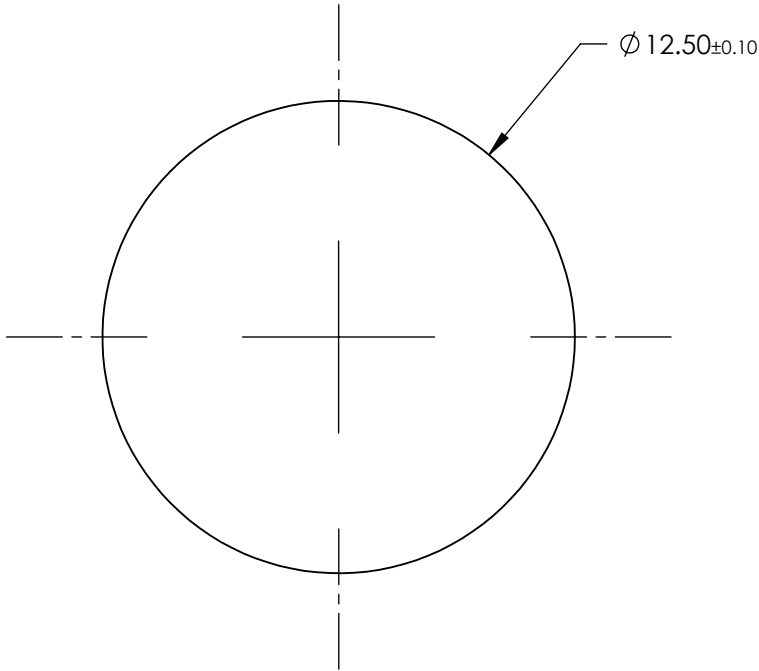


- NOTES:
- 1. MATERIAL: UV Grade Fused Silica
  - 2. TRANSMITTED WAVEFRONT ERROR: < λ/4

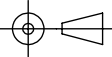


	VALUE
CENTER WAVELENGTH (CWL)	534.00 nm
TRANSMISSION BANDWIDTH (MINIMUM)	20.00 nm
FULL WIDTH HALF MAX (TYPICAL)	25.00 nm
AVERAGE TRANSMISSION OVER BANDWIDTH (MINIMUM)	93 %
BLOCKING WAVELENGTH RANGE	250 - 1100 nm
OD6 BLOCKING RANGE < 3% FROM EDGE OF BANDWIDTH	300 - 510 & 555 - 725
CLEAR APERTURE (mm)	Ø 11.25
SURFACE QUALITY	60-40
COATING TYPE	HARD COATED
DURABILITY	MIL-C-48497A, SECTION 3.4.1
ENVIRONMENTAL	MIL-STD-810F, SECTION 507.4

**FOR INFORMATION ONLY:**  
**DO NOT MANUFACTURE**  
**PARTS TO THIS DRAWING**

SPECIFICATIONS SUBJECT TO CHANGE WITHOUT NOTICE  
DIMENSIONS ARE FOR REFERENCE ONLY

**EO**® **Edmund Optics®**

THIRD ANGLE PROJECTION 		TITLE	534nm CWL, 12.5mm Dia, 20nm Bandwidth, Unmounted OD 6 Fluorescence Bandpass Filter	
ALL DIMS IN	mm	DWG NO	18373	SHEET 1 OF 1