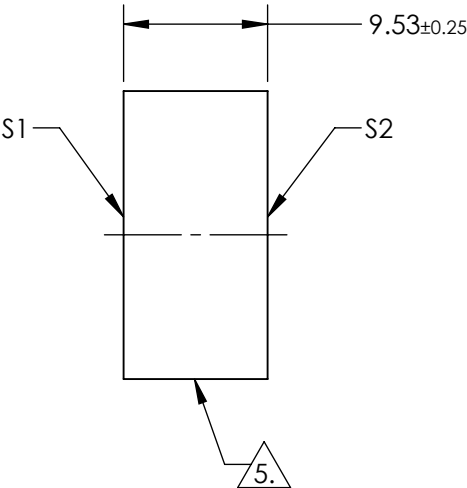
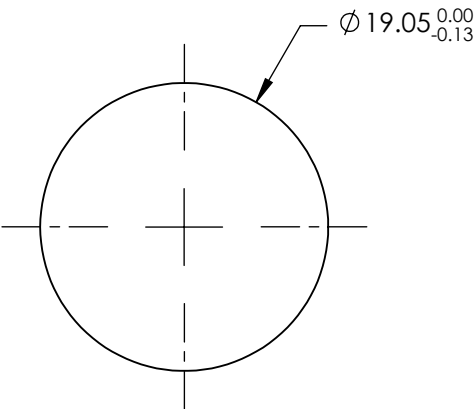
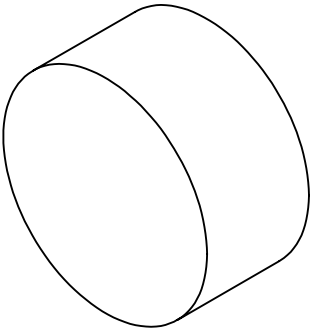


- NOTES:
- 1. SUBSTRATE: Fused Silica
 - 2. SURFACE S2 TO BE PARALLEL WITH SURFACE S1 TO WITHIN < 5 ARCMIN
 - 3. COATING (APPLY ACROSS CLEAR APERTURE)
 - S1: R(ABS) = 90 ± 1.5% @ 1064nm
 - S2: R(ABS) < 0.25% @ 1064nm

4. FINE GRIND SURFACE

5. ROHS COMPLIANT



**FOR INFORMATION ONLY:
DO NOT MANUFACTURE
PARTS TO THIS DRAWING**

SPECIFICATIONS SUBJECT TO CHANGE WITHOUT NOTICE
DIMENSIONS ARE FOR REFERENCE ONLY

	S1	S2
SHAPE	PLANO	PLANO
SURFACE FLATNESS	$\lambda/10$	N/A
SURFACE QUALITY	20-10	20-10
CLEAR APERTURE	$\varnothing 17.15$	N/A
BEVEL	PROTECTED AS NEEDED	PROTECTED AS NEEDED



ALL DIMS IN mm

Edmund Optics®

TITLE

1064nm, 90R/10T, 19.05mm Dia., Nd:YAG
Laser Output Coupler

DWG NO

17622

SHEET
1 OF 1