
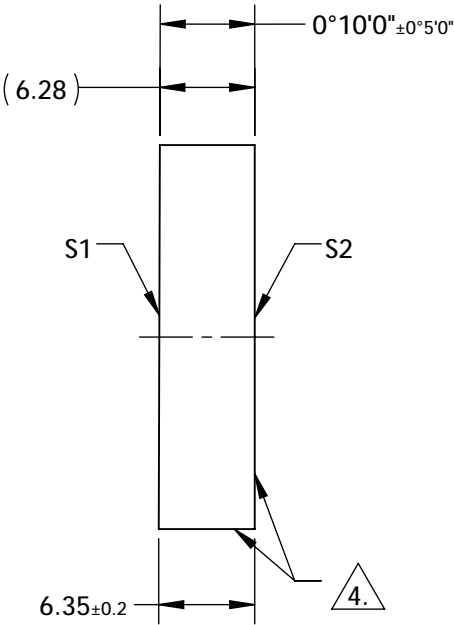
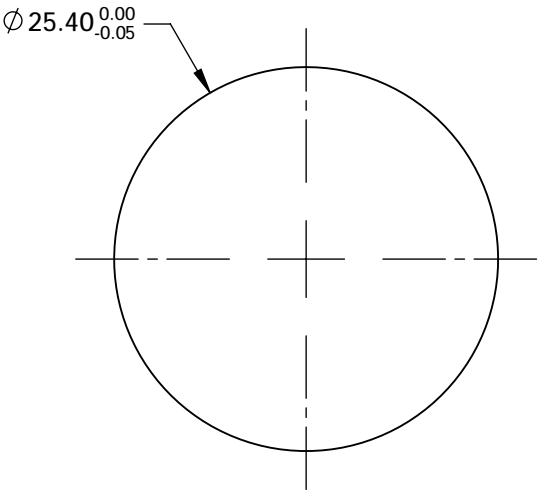
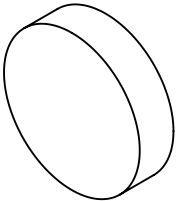


NOTES:

- 1. SUBSTRATE: FUSED SILICA
- 2. SURFACE S1 TO BE PARALLEL TO SURFACE S2 TO WITHIN < 10 ARCMIN
- 3. COATING (APPLY ACROSS COATING APERTURE)  
S1:R(AVG) >99.8% @ 720 - 840NM (P-POLARIZATION)  
R(ABS) >99.8% @ 780NM (TYPICAL, P-POLARIZATION)  
GDD = -300 fs<sup>2</sup>  
S2: NONE
- 4.  COMMERCIAL POLISHED SURFACE
- 5. RoHS: COMPLIANT

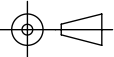


**FOR INFORMATION ONLY:**  
**DO NOT MANUFACTURE**  
**PARTS TO THIS DRAWING**


SPECIFICATIONS SUBJECT TO CHANGE WITHOUT NOTICE  
DIMENSIONS ARE FOR REFERENCE ONLY

	S1	S2
SHAPE	PLANO	PLANO
IRREGULARITY	λ/10	λ/10
CLEAR APERTURE	Ø20.32	Ø20.32
BEVEL	PROTECTIVE AS NEEDED	PROTECTIVE AS NEEDED

THIRD ANGLE  
PROJECTION



ALL DIMS IN      mm

 **Edmund Optics**®

TITLE	25.4mm 20°, 780nm Highly-Dispersive Ultrafast Mirror		
DWG NO	17067	SHEET 1 OF 1	