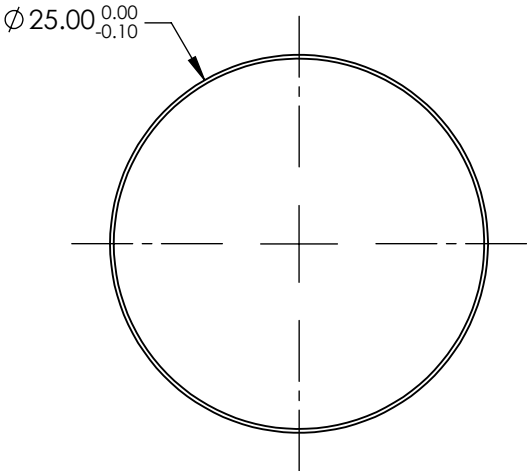


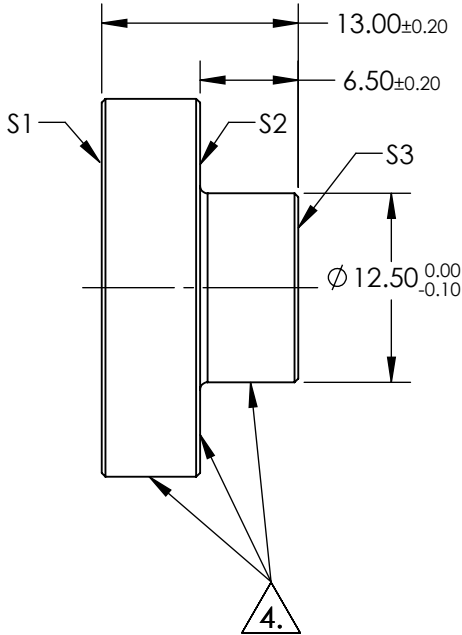
NOTES:

- 1. SUBSTRATE: FUSED SILICA
- 2. RoHS: COMPLIANT
- 3. COATING (APPLY ACROSS COATING APERTURE)
S1: R(AVG) ≥98% @ 400 - 750nm (0 - 45°, All Polarizations)
R(AVG) ≥99% @ 400 - 750nm (0 - 45°, S-Polarization)
S2 & S3: NONE

4. FINE GRIND SURFACE



FOR INFORMATION ONLY:
DO NOT MANUFACTURE
PARTS TO THIS DRAWING



SPECIFICATIONS SUBJECT TO CHANGE WITHOUT NOTICE
DIMENSIONS ARE FOR REFERENCE ONLY

	S1	S2	S3	<div><div><div>Edmund Optics®</div></div></div>			
SHAPE	PLANO	PLANO	PLANO	<div>THIRD ANGLE PROJECTION</div>			
SURFACE QUALITY	20-10	FINE GRIND	COMMERCIAL POLISH				
CLEAR APERTURE	Ø22.50	N/A	N/A	TITLE25mm Dia., VIS Broadband Dielectric, λ/10 Stemmed Mirror			
BEVEL	PROTECTIVE AS NEEDED	PROTECTIVE AS NEEDED	PROTECTIVE AS NEEDED	ALL DIMS IN	mm	DWG NO16734	SHEET 1 OF 1