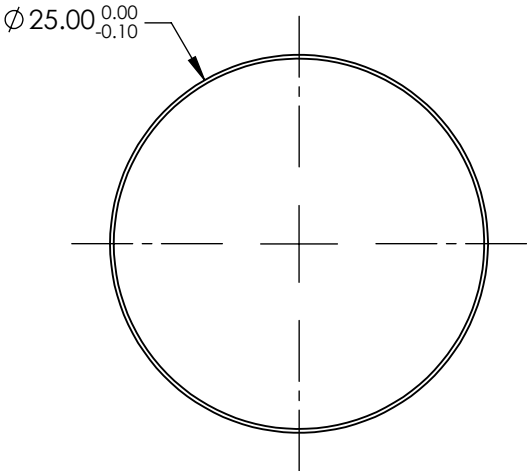


NOTES:

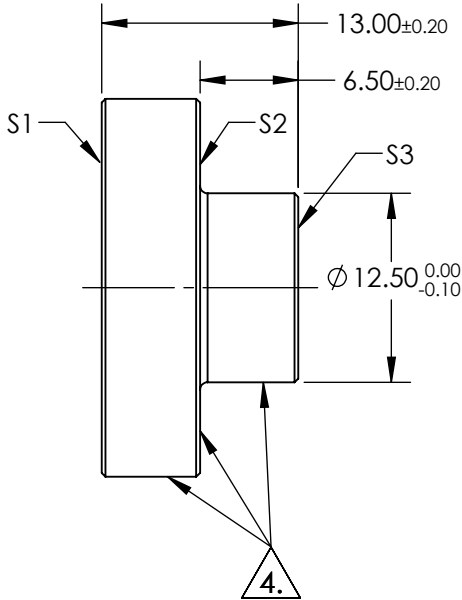
- 1. SUBSTRATE: FUSED SILICA
- 2. RoHS: COMPLIANT
- 3. COATING (APPLY ACROSS COATING APERTURE)
S1: R(AVG) ≥98% @ 340 - 488nm (0°, All Polarizations)
R(AVG) ≥98% @ 320 - 450nm (45°, All Polarizations)
R(AVG) ≥99% @ 320 - 450nm (45°, S-Polarization)

S2 & S3: NONE

4. FINE GRIND SURFACE

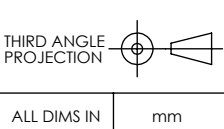


**FOR INFORMATION ONLY:
DO NOT MANUFACTURE
PARTS TO THIS DRAWING**



SPECIFICATIONS SUBJECT TO CHANGE WITHOUT NOTICE
DIMENSIONS ARE FOR REFERENCE ONLY

	S1	S2	S3
SHAPE	PLANO	PLANO	PLANO
SURFACE QUALITY	20-10	FINE GRIND	COMMERCIAL POLISH
CLEAR APERTURE	Ø22.50	N/A	N/A
BEVEL	PROTECTIVE AS NEEDED	PROTECTIVE AS NEEDED	PROTECTIVE AS NEEDED



Edmund Optics®

TITLE	25mm Dia., UV Broadband Dielectric, λ/10 Stemmed Mirror		
DWG NO	16732	SHEET 1 OF 1	