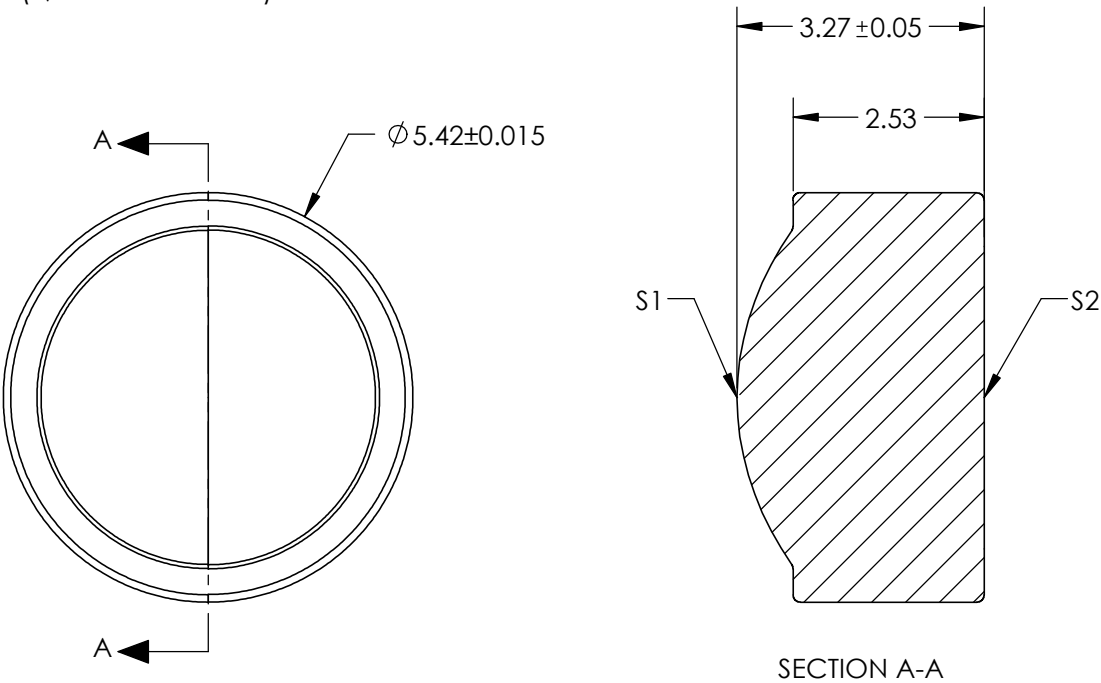



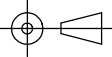
NOTES:

- 1. SUBSTRATE:
D-ZLAF52LA
- 2. NUMERICAL APERTURE: 0.47
- 3. COATING
S1 & S2: R(ABS)<1.0% @ 600 - 1050nm
- 4. FOCAL LENGTH TOLERANCE: ±1%
- 5. TRANSMITTED WAVEFRONT ERROR (λ, RMS @ 632.8NM): <0.070
- 6. DESIGN WAVELENGTH: 780nm



**FOR INFORMATION ONLY:
DO NOT MANUFACTURE
PARTS TO THIS DRAWING**

SPECIFICATIONS SUBJECT TO CHANGE WITHOUT NOTICE
DIMENSIONS ARE FOR REFERENCE ONLY

	S1	S2	EFL	4.47	 Edmund Optics®		
			WD	3.10			
SHAPE	CONVEX	PLANO		TITLE	LightPath 355022 5.42mm Dia., 0.47 NA, BBAR (600-1050nm), Molded Aspheric Lens		
SURFACE QUALITY	40-20	40-20					
CLEAR APERTURE	Ø 4.20	Ø 2.77					
BEVEL	PROTECTED AS NEEDED	PROTECTED AS NEEDED	ALL DIMS IN	mm	DWG NO	16688	SHEET 1 OF 1